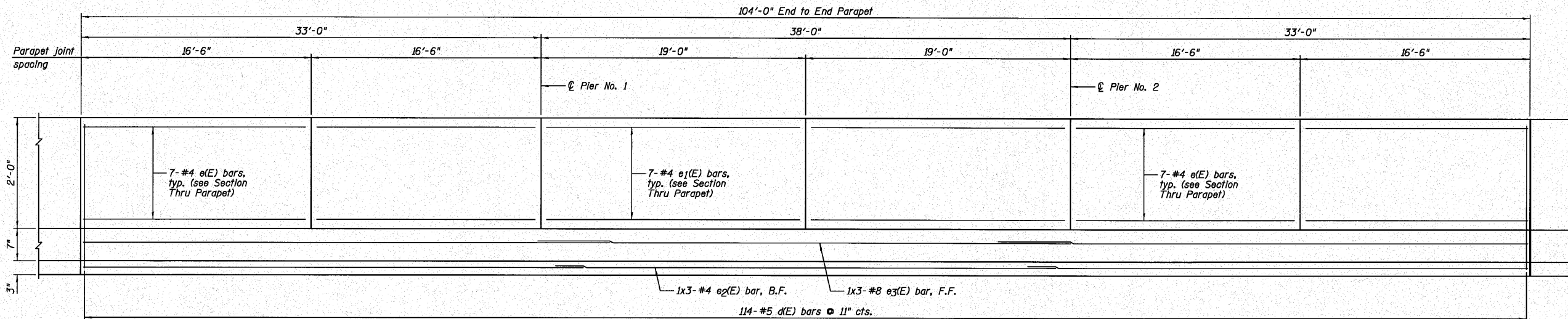
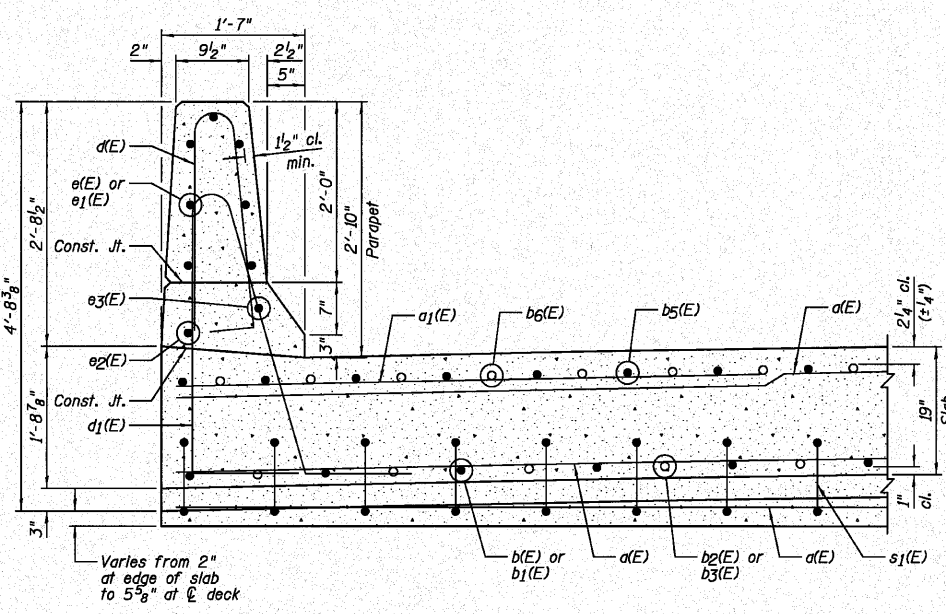


STATE OF ILLINOIS
DEPARTMENT OF TRANSPORTATION

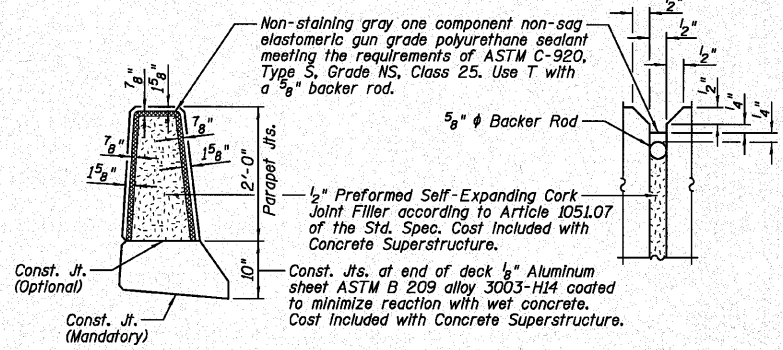


BAR LAP	
#4	2'-0"
#8	5'-2"

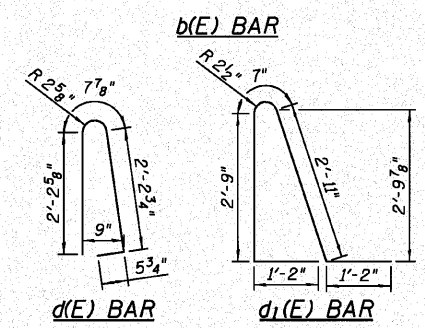
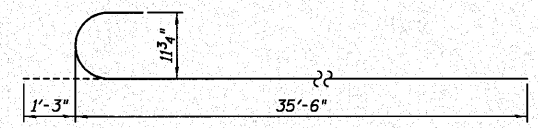
INSIDE ELEVATION OF PARAPET



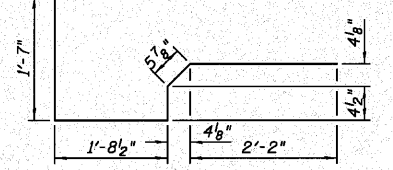
SECTION THRU PARAPET



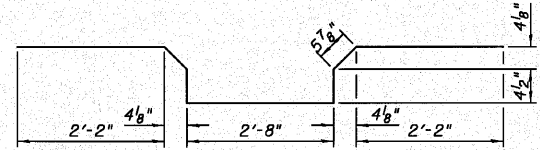
PARAPET JOINT DETAILS



d(E) BAR d1(E) BAR



s(E) BAR



s1(E) BAR

SUPERSTRUCTURE
BILL OF MATERIAL

Bar	No.	Size	Length	Shape
a(E)	166	#5	34'-10"	
a1(E)	138	#6	6'-6"	
b(E)	54	#9	36'-9"	
b1(E)	27	#9	43'-3"	
b2(E)	52	#9	28'-1"	
b3(E)	26	#9	26'-6"	
b4(E)	72	#5	16'-10"	
b5(E)	72	#9	38'-6"	
b6(E)	70	#9	18'-0"	
d(E)	228	#5	5'-7"	
d1(E)	228	#5	8'-7"	
e(E)	56	#4	16'-2"	
e1(E)	28	#4	18'-8"	
e2(E)	6	#4	35'-11"	
e3(E)	6	#8	38'-0"	
s(E)	70	#4	6'-4"	
s1(E)	70	#4	8'-9"	
Item		Unit	Quantity	
Concrete Superstructure		Cu. Yd.	246.1	
Reinforcement Bars, Epoxy Coated		Pound	46,160	

SUPERSTRUCTURE DETAILS
STRUCTURE NO. 006-0182

DESIGNED	SDH
CHECKED	JML
DRAWN	DJM/JWK
CHECKED	MSW

DATE 10/08/10

- NOTES:
- 1.) B.F. denotes Back Face and F.F. denotes Front Face.
 - 2.) Inside elevation of parapet is exaggerated vertically to show reinforcement.
 - 3.) Bar indicated thus 1x3-#4 etc. indicates 1 line of bars with 3 lengths per line.

Farnsworth GROUP, INC.
2709 McGraw Drive
Bloomington, Illinois 61704
309/663-8435, 309/663-1571 fax

SHEET NO. B7
17 SHEETS

F.A.S. RTE.	SECTION	COUNTY	TOTAL SHEETS	SHEET NO.
1249	(23 BR)BR	BUREAU	39	20
CONTRACT NO. 66909				
FED. ROAD DIST. NO.	ILLINOIS	FED. AID PROJECT		