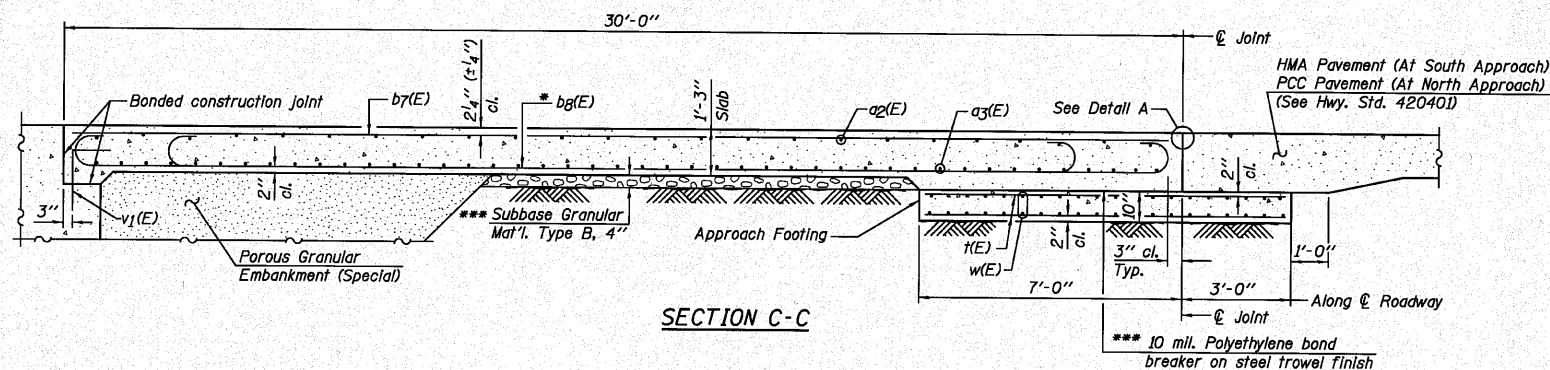
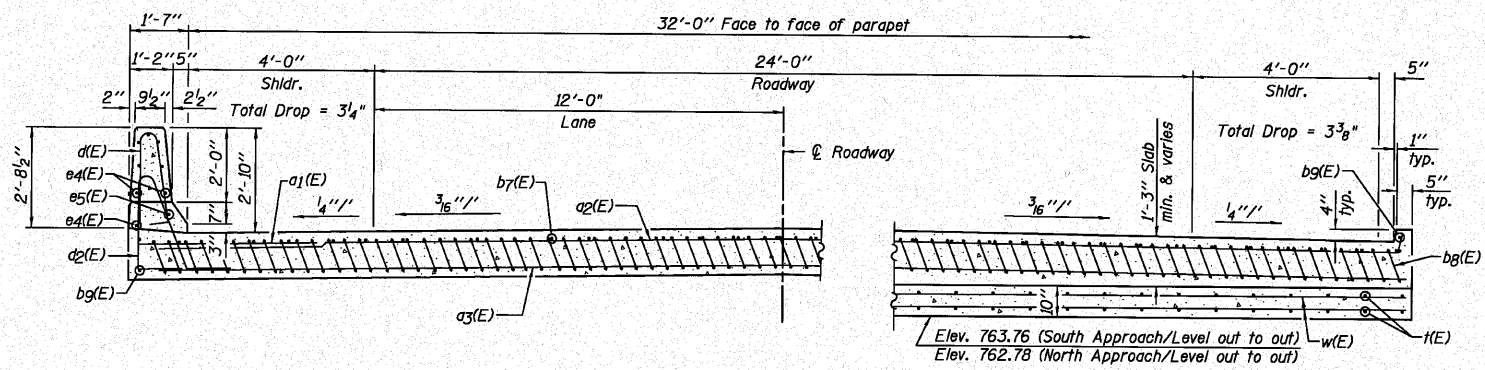


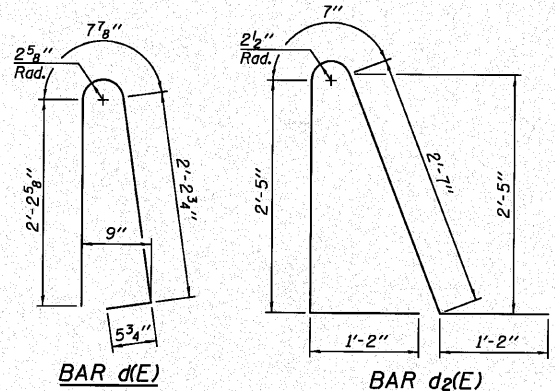
STATE OF ILLINOIS
DEPARTMENT OF TRANSPORTATION



Notes:
See Sheet B8 for Detail A and View B-B.
Approach slab and parapet concrete shall be paid for as Concrete Superstructure.
Approach footing concrete shall be paid for as Concrete Structures.
Reinforcement shall be paid for as Reinforcement Bars, Epoxy Coated.
For v(E) bar details, see Sheets B10 and B11.
The approach footing maximum applied service bearing pressure (Q_{max}) = 2.0 ksf.
Cost of excavation for approach footing included with Concrete Structures.
For Porous Granular Embankment (Special) and drainage treatment details, see Sheet B2.
For additional parapet details, see Sheet B7.

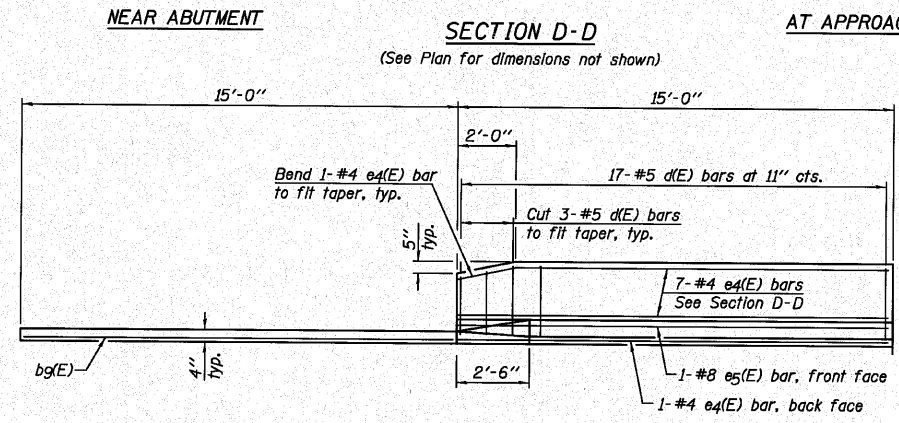


* Tilt #9 bg(E) bars as required to maintain clearance.
*** Cost Included with Concrete Superstructure.

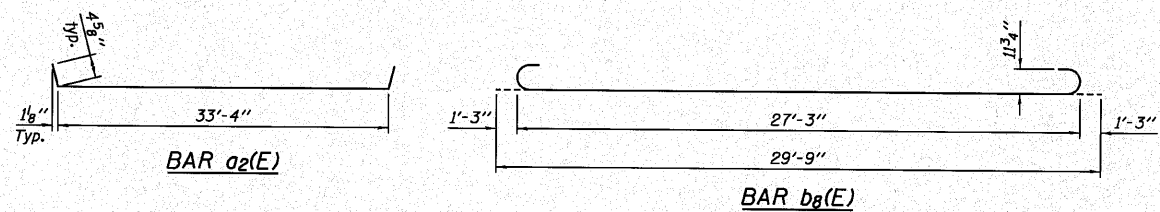


TWO APPROACHES
BILL OF MATERIAL

Bar	No.	Size	Length	Shape
a1(E)	48	#6	6'-6"	—
a2(E)	50	#4	34'-1"	—
a3(E)	92	#5	33'-6"	—
b7(E)	54	#4	29'-8"	—
bg(E)	158	#9	29'-9"	—
bg(E)	8	#4	14'-8"	—
d(E)	68	#5	5'-7"	—
d2(E)	68	#5	7'-11"	—
e4(E)	32	#4	14'-8"	—
e5(E)	4	#8	14'-8"	—
k(E)	136	#4	9'-8"	—
w(E)	80	#5	33'-6"	—
Item	Unit	Quantity		
Concrete Superstructure	Cu. Yd.	107.2		
Concrete Structures	Cu. Yd.	20.9		
Reinforcement Bars, Epoxy Coated	Pound	27,050		



VIEW E-E



DESIGNED	SDH
CHECKED	JML
DRAWN	DJM/JWK
CHECKED	MSW

DATE 10/08/10 BA-0 11-1-09

BRIDGE APPROACH SLAB DETAILS
STRUCTURE NO. 006-0182

F.A.S. RTE. 1249	SECTION	COUNTY	TOTAL SHEETS	SHEET NO.
	(23 BR)BR	BUREAU	39	22
SHEET NO. B9 17 SHEETS		CONTRACT NO. 66909		
FED. ROAD DIST. NO.		ILLINOIS	FED. AID PROJECT	

Farnsworth
GROUP, INC.
2709 McGraw Drive
Bloomington, Illinois 61704
309/663-8435, 309/663-1571 fax