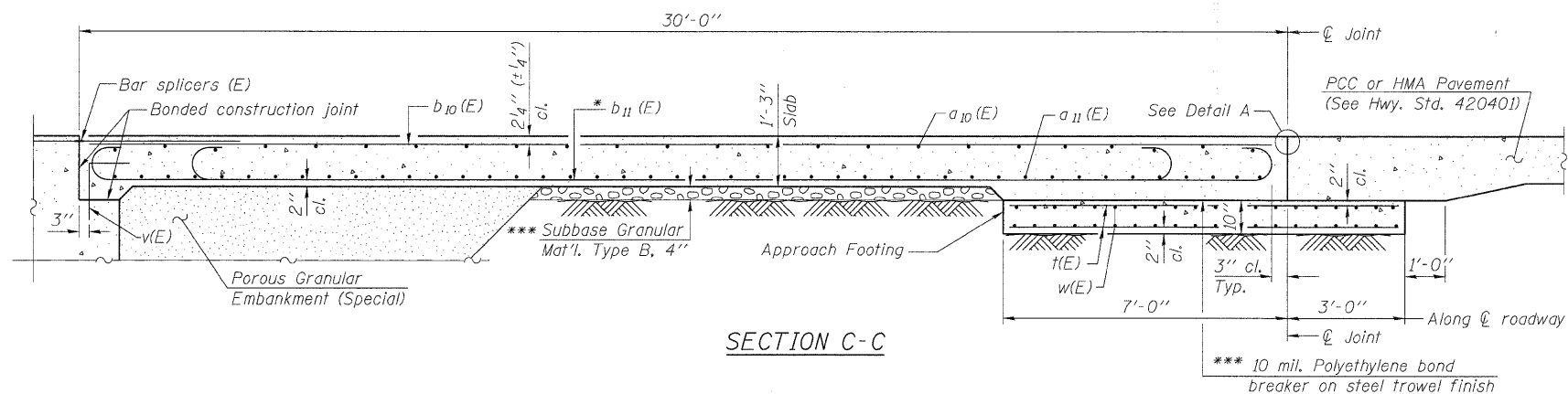


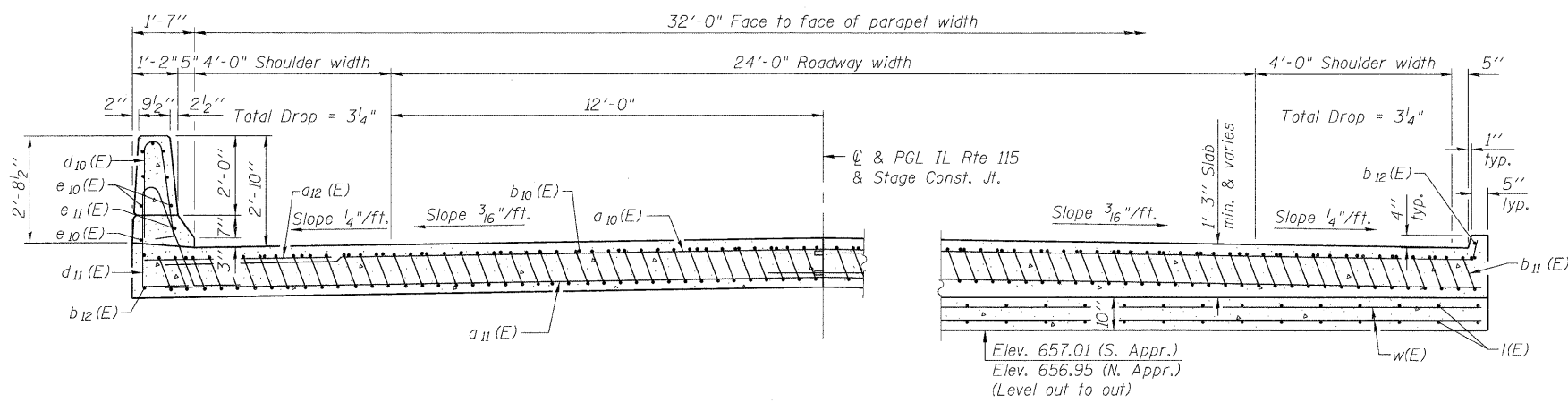
STATE OF ILLINOIS
DEPARTMENT OF TRANSPORTATION

Notes:

See sheet 11 of 21 for Detail A and View B-B.
Approach slab and parapet concrete shall be paid for as Concrete Superstructure.
Approach footing concrete shall be paid for as Concrete Structures.
Reinforcement shall be paid for as Reinforcement Bars, Epoxy Coated.
For v(E) bar details, see sheet 9 of 21.
The approach footing maximum applied service bearing pressure (Qmax) = 2.0 ksf.
For bar splicer details, see sheet 17 of 21.
Cost of excavation for approach footing included with Concrete Structures.
For Porous Granular Embankment (Special) and drainage treatment details, see sheet 2 of 21.
For additional parapet details, see sheet 9 of 21.



SECTION C-C



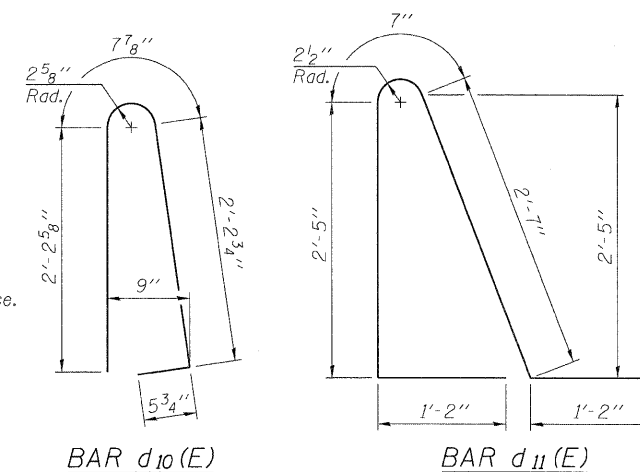
NEAR ABUTMENT

SECTION D-D

AT APPROACH FOOTING

(See Plan for dimensions not shown)

* Tilt #9 b11(E) bars as required to maintain clearance.
*** Cost included with Concrete Superstructure.

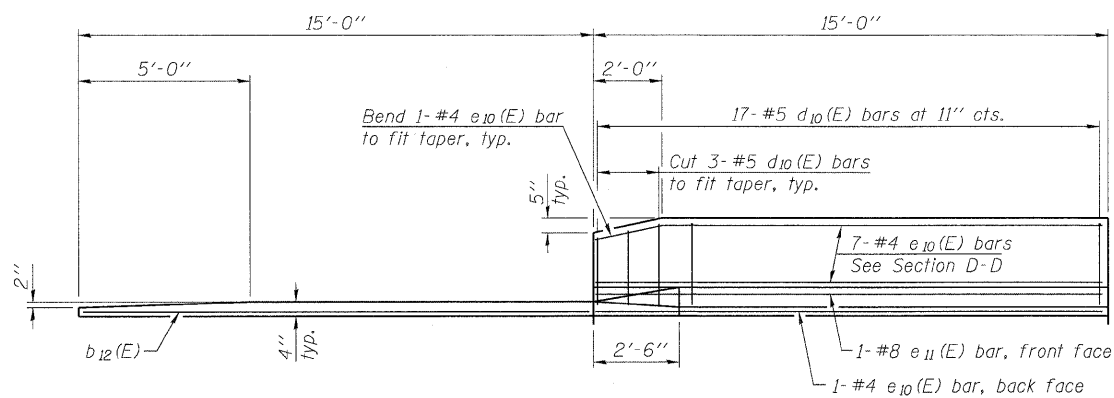


BAR d10(E)

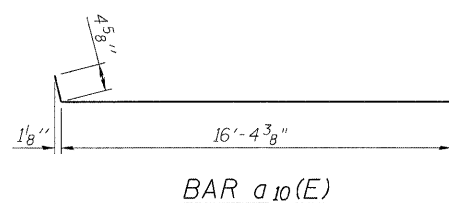
BAR d11(E)

TWO APPROACHES
BILL OF MATERIAL

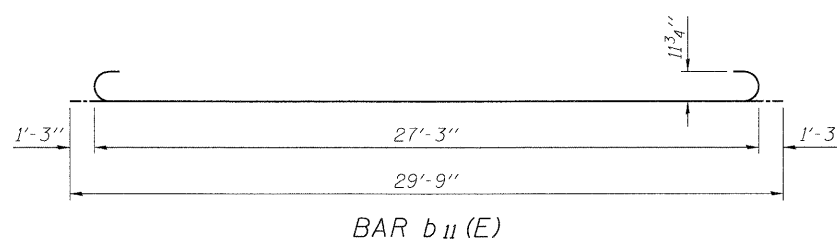
Bar	No.	Size	Length	Shape
a10(E)	100	#4	16'-9"	—
a11(E)	184	#5	16'-7"	—
a12(E)	48	#6	6'-6"	—
b10(E)	56	#4	29'-8"	—
b11(E)	160	#9	29'-9"	—
b12(E)	8	#4	14'-8"	—
d10(E)	68	#5	5'-7"	U
d11(E)	68	#5	7'-11"	U
e10(E)	32	#4	14'-8"	—
e11(E)	4	#8	14'-8"	—
t(E)	140	#4	9'-8"	—
w(E)	160	#5	16'-7"	—
Concrete Superstructure		Cu. Yd.	105.9	
Concrete Structures		Cu. Yd.	20.9	
Reinforcement Bars, Epoxy Coated		Pound	27,240	



VIEW E-E



BAR a10(E)



BAR b11(E)

ZROKA Engineering, P.C.
4216 North Hermitage
Chicago, IL 60613

DESIGNED	JLA
CHECKED	LAS
DRAWN	SAW
CHECKED	JLA

BA-0

11-1-09

(Sheet 2 of 2)
BRIDGE APPROACH SLAB DETAILS
STRUCTURE NO. 027-0099

SHEET NO. 12 OF 21 SHEETS	F.A.P. RTE.	SECTION	COUNTY	TOTAL SHEETS	SHEET NO.
	796	(106)BR-3	FORD	48	23
SN 027-0099		CONTRACT NO. 66916			
FED. ROAD DIST. NO.		ILLINOIS	FED. AID PROJECT		