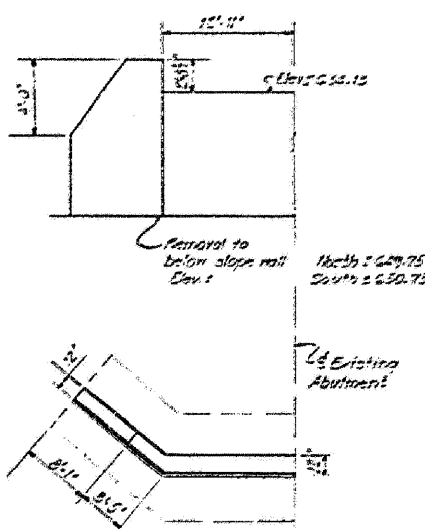
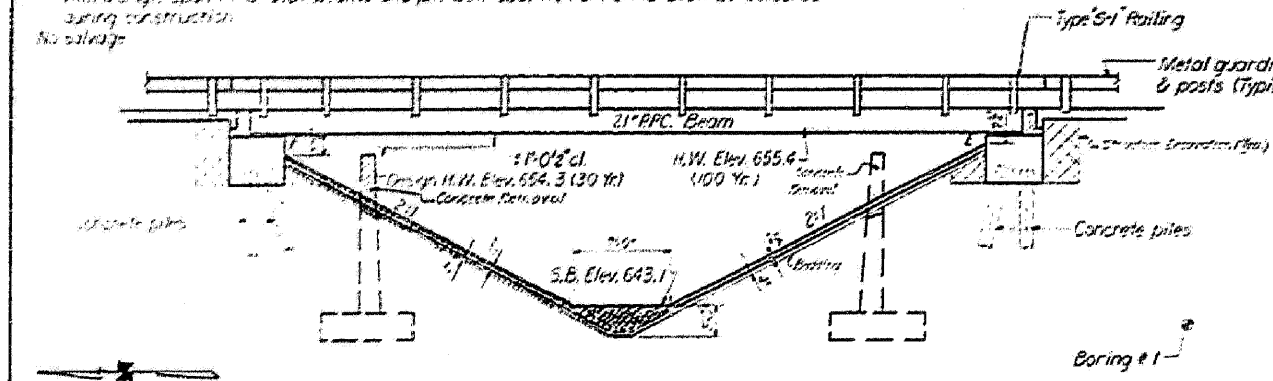


Plan View of 1/2" G.S. channel cross on N.E. Ringwall, Elev. 656.85.  
 Existing Structure No. 027-0037, built as S.B.I. Rte. 115, Sec. 106-B, Sta. 1711+31 in 1927. The RC third Girder Single 45' Span  
 20'-0" wide superstructure on P.C. dressed abutments shall be removed and replaced  
 with a single span P.C. deck beams and pile bent abutments. Traffic shall be detoured  
 during construction.  
 No salvage.

STATE OF ILLINOIS  
 DEPARTMENT OF TRANSPORTATION

PROJECT NO.	SECTION	COUNTY	TOTAL SHEETS	SHEET NO.
027-0037	(106) BR-3	FORD	48	33



**GENERAL NOTES**

All structural steel shall be shop primed with two coats of zinc lead silico chromate paint.

Expansion joints which are not cast in the precast unit shall be fabricated and erected in accordance with Article 503.07(c) of the Standard Specifications and are included in quantity of structural steel.

Plan dimensions and details relative to existing structure have been taken from existing plans and are subject to general construction variations. It shall be the Contractor's responsibility to verify such dimensions and details in the field and make necessary adjustments. Variations shall be noted on the drawings. Such variations shall not be cause for additional compensation for a change in the scope of the work, however, the Contractor will be paid for the quantity actually furnished at the unit price bid for the work.

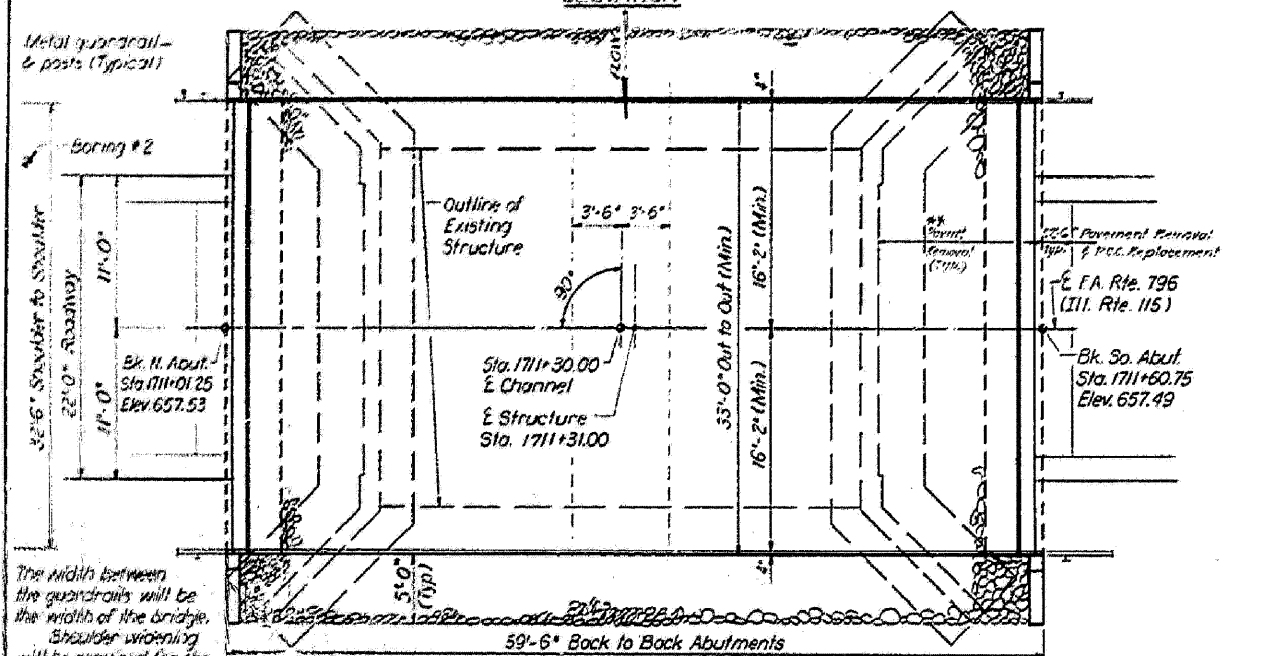
The top surface of the beams shall be finished in accordance with Article 505.06 of the Standard Specifications, except that the surface shall not be completed by troweling. The finished surface shall be free of depressions or high spots with sharp corners, and the top edge of beams shall be rounded to a minimum of 1/2".

The Contractor shall drive one concrete test pile in a permanent location at the North Abutment, as directed by the Engineer before ordering the remainder of piles.

For boring data see Appendix.

Reinforcement bars shall conform to the requirements of AASHTO M-51 or M-53 Grade 60.

±±± Removal behind existing abutments shall be incidental to removal of existing superstructures.



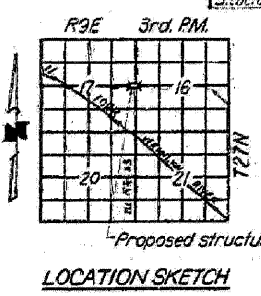
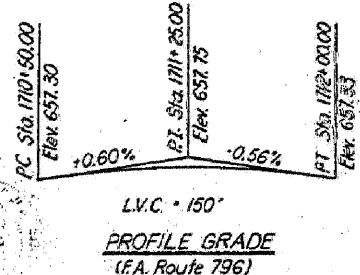
STATION 1711+31  
 BUILT 19 BY  
 STATE OF ILLINOIS  
 F.A. RT. 796 SEC. 106 BR-3  
 LOADING HS 20  
 \* STR. NO.

**TOTAL BILL OF MATERIAL**

Item	Unit	Super	Sub.	Total
Removal of Existing Superstructures	Each	1		1
Reinforced Concrete Surface Course, Class 2	Ton	27		27
Concrete Removal	Cu Yd	76		76
Class X Concrete	Cu Yd	6.5		6.5
Reinforcement Bars	Pounds	290	2900	3190
Structural Steel	Pounds	2370		2370
Concrete Piles	Linear Ft.	557		557
Test Pile (Concrete)	Each	1		1
Pavement Removal (P.C. Pavement Type 2, 10')	Sq Yd	12		12
Name Plates	Each		1	1
Stone Riprap	Cu Yd	267		267
Preformed Jt. Sp. (2")	Lin. Ft.	33		33
Precast Prestressed Conc. Deck Bms. (21")	Sq Ft.	1871		1871
Steel Rollings Type S-1	Lin. Ft.	112		112
P.C. Mortar Bedding 055	Lin. Ft.	567		567
Waterproofing Membrane System	Sq Yd	210		210
Structure Erection	Cu Yd	72		72

**LOADING HS 20-44**  
 Design Specifications: 1977 AASHTO and 1978, 1979 & 1980  
 Interim Specifications as applicable.  
 Allow 25# / Sq. Ft. for future wearing surface.

**DESIGN STRESSES**  
**PRECAST PRESTRESSED UNITS**  
 f<sub>c</sub> = 5,000 p.s.i.  
 f<sub>o</sub> = 48,000 p.s.i.  
 f<sub>s</sub> = 270,000 p.s.i.  
 (2# Strands)  
 f<sub>si</sub> = 189,000 p.s.i.  
 (1/2# Strands)  
**FIELD UNITS**  
 f<sub>c</sub> = 3,500 p.s.i.  
 f<sub>y</sub> = 60,000 p.s.i.  
 (Reinforcement)



**GENERAL PLAN AND ELEVATION**  
**F.A. ROUTE 796 OVER**  
**DRAINAGE DITCH**  
**F.A. ROUTE 796 SECTION 106 BR-3**  
**FORD COUNTY**  
**STATION 1711+31.00**

**PLAN WATERWAY INFORMATION**

Flow	Downstream Area		Upstream Area		Head - Ft.	Woodwater El.
	Sq. Ft.	C.F.S.	Sq. Ft.	C.F.S.		
Design	30	517	300	380	68.49	0
Base	100	853	373	373	65.64	0
Overlapping	310	824	373	373	65.64	0.12
Max. Obs.	300	824	373	373	65.64	0.12

DESIGNED: J. A. Maloney  
 CHECKED: P. M. Maloney  
 DRAWN: J. A. Maloney  
 CHECKED: P.M.P.