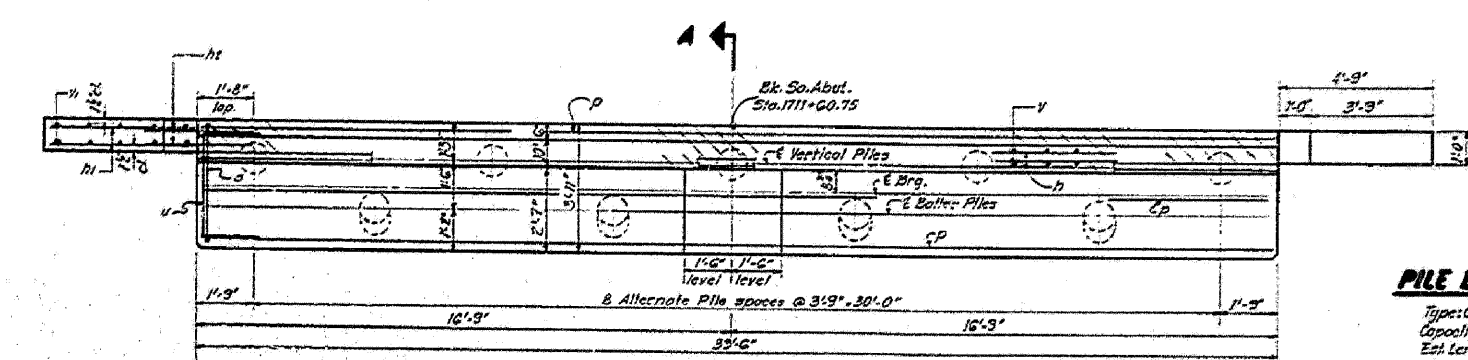
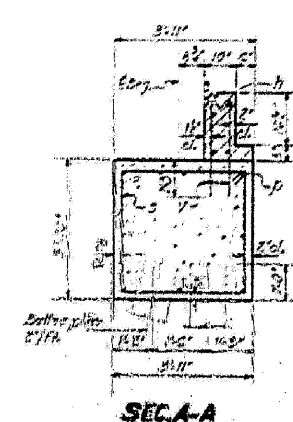
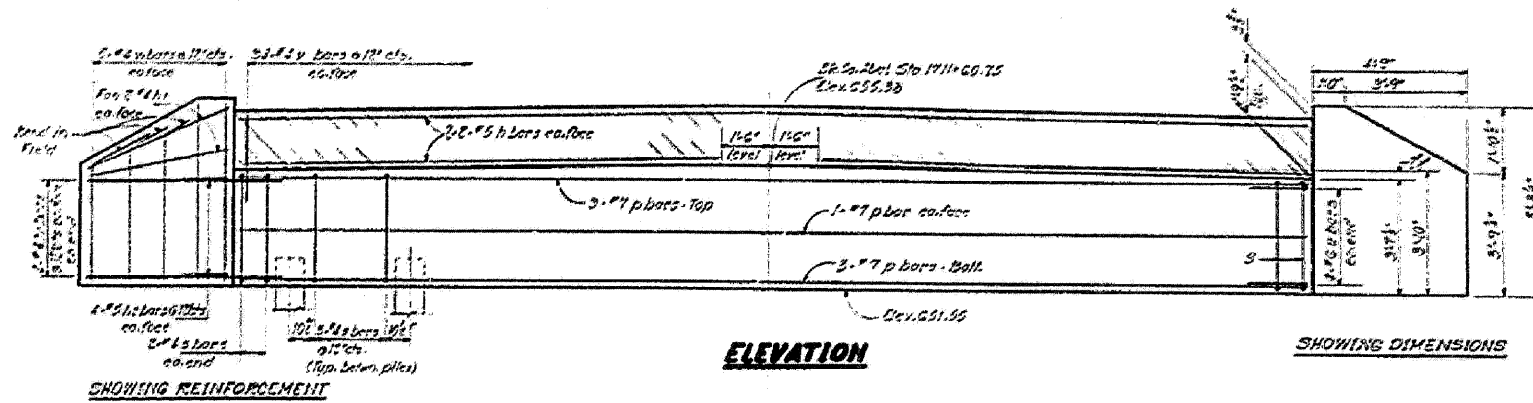


STATE OF ILLINOIS
DEPARTMENT OF TRANSPORTATION

DESIGNED	DATE	BY	NO.	REV.	SHEET NO. OF SHEETS
DAZ	09/03/10	DAZ	48	38	7



BILL OF MATERIAL

Qty	Size	Length	Weight
7	#5	7'-7"	—
14	#5	2'-6"	—
14	#5	3'-0"	—
5	#7	30'-3"	—
5	#6	15'-2"	—
4	#6	8'-0"	—
4	#6	2'-11"	—
7	#6	5'-5"	—
Reinforcement Bars 1400			
Class II Concrete 10.16 21.6			
Concrete Piles 11.77 24.5			
Concrete Removal Cu.Yd. 7			

PILE DATA

Type: Concrete
Capacity: 40 Tons
Est. Length: 27 Ft.
No. Required: 7

Notes:
Hatched area shall be poured after beams are in place.
All edges shall have standard 3" chamfers unless otherwise noted.

DESIGNED	C.A. Halpern	EXAMINED	[Signature]
CHECKED	[Signature]	DRAWN	[Signature]
DRAWN	[Signature]	CHECKED	P.M.P.



SOUTH ABUTMENT
E.A.R.T. 796 SEC. 106BR-3
FORD COUNTY
STA. 1711+31.00