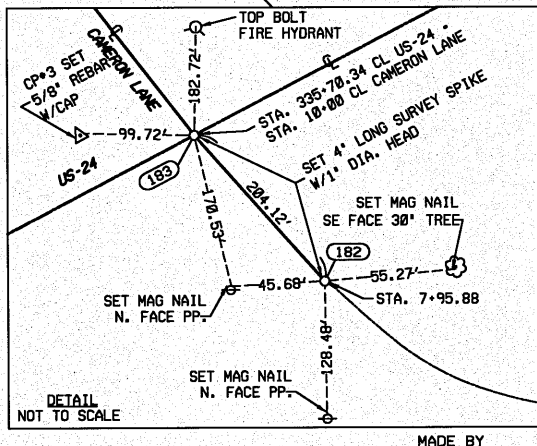
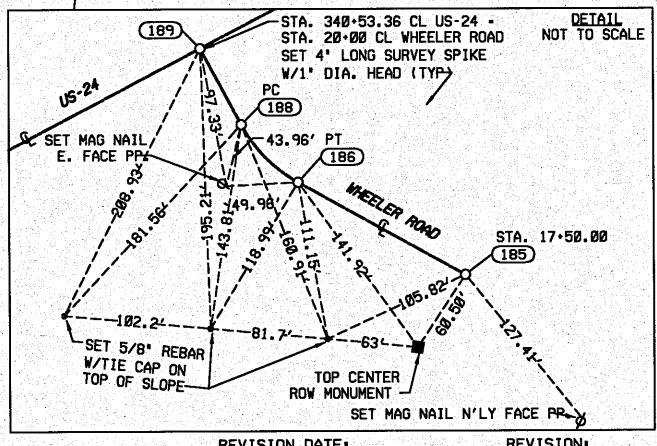
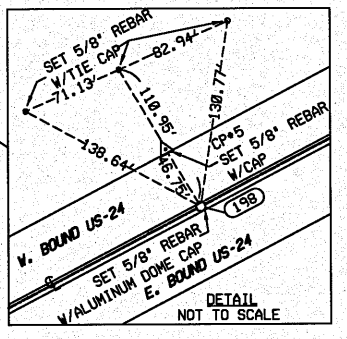
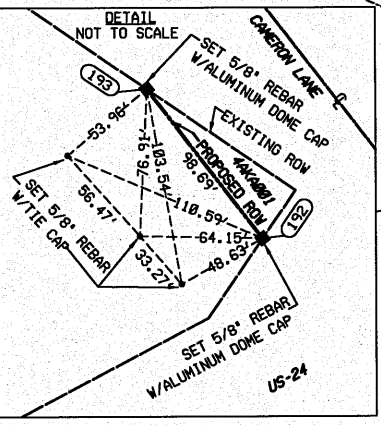
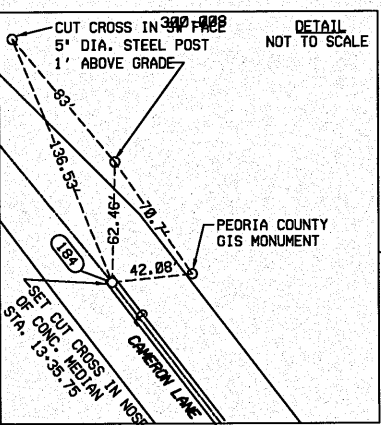
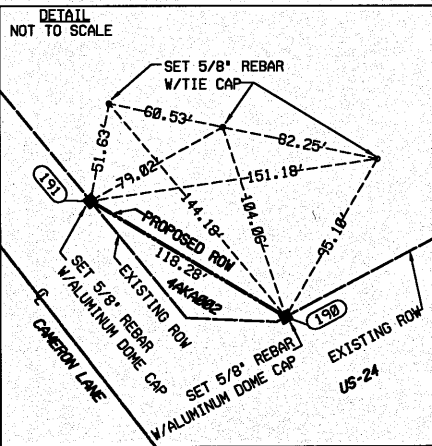
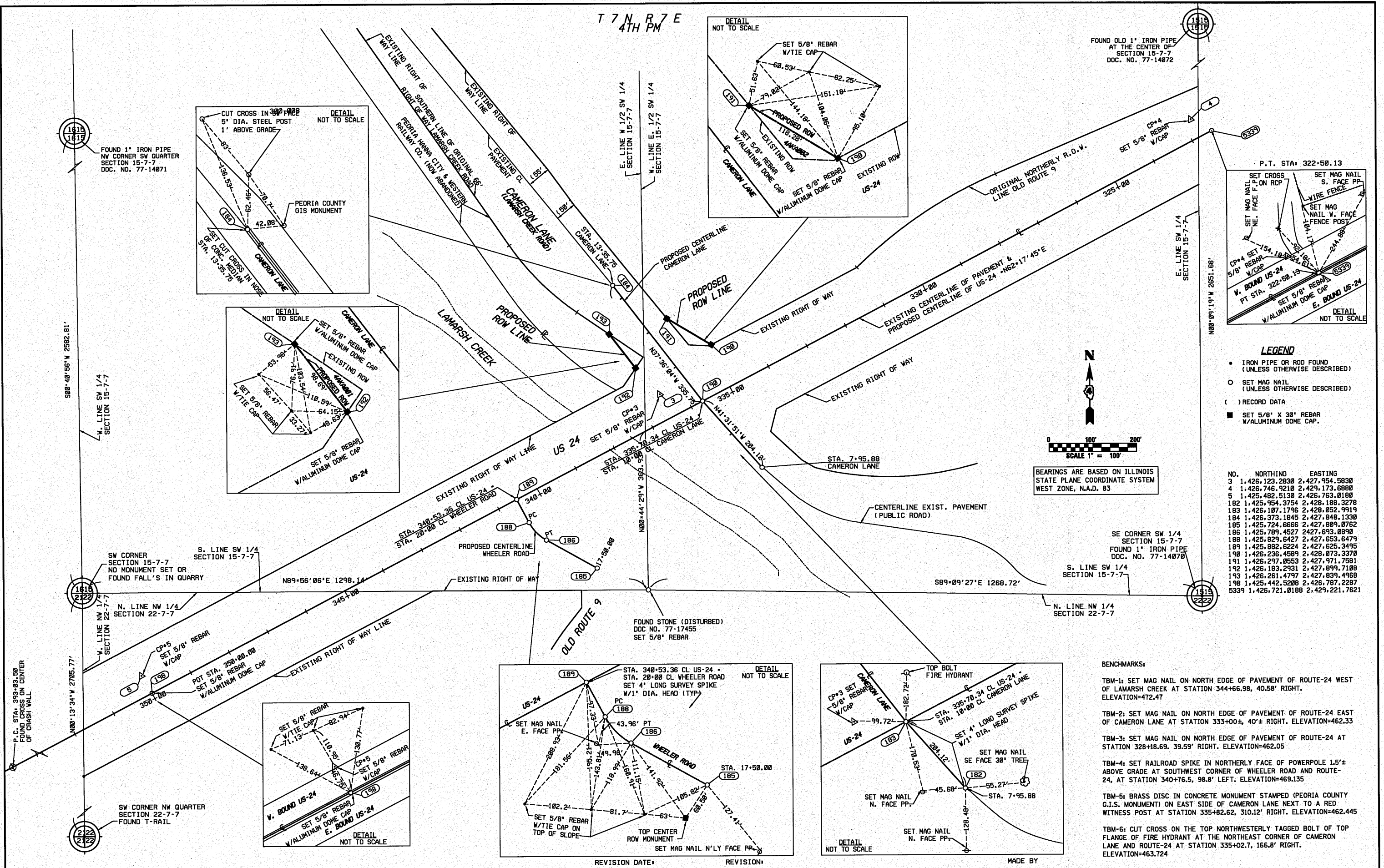
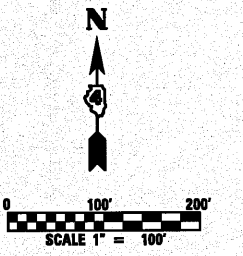
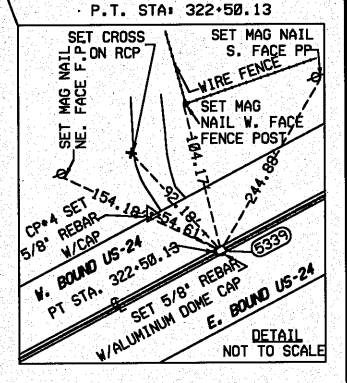


T 7 N R 7 E  
4TH PM



FOUND OLD 1" IRON PIPE AT THE CENTER OF SECTION 15-7-7 DOC. NO. 77-14872



BEARINGS ARE BASED ON ILLINOIS STATE PLANE COORDINATE SYSTEM WEST ZONE, N.A.D. 83

- LEGEND**
- IRON PIPE OR ROD FOUND (UNLESS OTHERWISE DESCRIBED)
  - SET MAG NAIL (UNLESS OTHERWISE DESCRIBED)
  - ( ) RECORD DATA
  - SET 5/8" X 30" REBAR W/ALUMINUM DOME CAP.

NO.	NORTHING	EASTING
3	1,426,123.2830	2,427,954.5830
4	1,426,746.9210	2,429,173.6980
5	1,425,482.5130	2,426,763.0180
182	1,425,954.3754	2,426,188.3278
183	1,426,187.1796	2,426,852.9519
184	1,426,373.1845	2,427,848.1330
185	1,425,724.6666	2,427,809.0762
186	1,425,789.4527	2,427,693.0890
188	1,425,829.6427	2,427,653.6479
189	1,425,882.6224	2,427,625.3495
190	1,426,236.4589	2,428,073.3370
191	1,426,297.0553	2,427,971.7581
192	1,426,183.2931	2,427,899.7188
193	1,426,261.4797	2,427,839.4968
198	1,425,442.5208	2,426,787.2287
5339	1,426,721.0188	2,429,221.7621

BENCHMARKS:

- TBM-1: SET MAG NAIL ON NORTH EDGE OF PAVEMENT OF ROUTE-24 WEST OF LAMARSH CREEK AT STATION 344+66.98, 40.58' RIGHT. ELEVATION=472.47
- TBM-2: SET MAG NAIL ON NORTH EDGE OF PAVEMENT OF ROUTE-24 EAST OF CAMERON LANE AT STATION 333+00±, 40'± RIGHT. ELEVATION=462.33
- TBM-3: SET MAG NAIL ON NORTH EDGE OF PAVEMENT OF ROUTE-24 AT STATION 328+18.69, 39.59' RIGHT. ELEVATION=462.05
- TBM-4: SET RAILROAD SPIKE IN NORTHERLY FACE OF POWERPOLE 1.5'± ABOVE GRADE AT SOUTHWEST CORNER OF WHEELER ROAD AND ROUTE-24, AT STATION 340+76.5, 98.8' LEFT. ELEVATION=469.135
- TBM-5: BRASS DISC IN CONCRETE MONUMENT STAMPED (PEORIA COUNTY G.I.S. MONUMENT) ON EAST SIDE OF CAMERON LANE NEXT TO A RED WITNESS POST AT STATION 335+82.62, 310.12' RIGHT. ELEVATION=462.445
- TBM-6: CUT CROSS ON THE TOP NORTHWESTERLY TAGGED BOLT OF TOP FLANGE OF FIRE HYDRANT AT THE NORTHEAST CORNER OF CAMERON LANE AND ROUTE-24 AT STATION 335+02.7, 166.8' RIGHT. ELEVATION=463.724

FILE NAME =	USER NAME = #USER#	DESIGNED -	REVISED -	<b>STATE OF ILLINOIS DEPARTMENT OF TRANSPORTATION</b>	<b>HORIZONTAL ALIGNMENT, TIES, AND BENCHMARKS US-24 OVER LAMARSH CREEK</b>	F.A.P. RTE.	SECTION	COUNTY	TOTAL SHEETS	SHEET NO.	
#FILEL#		DRAWN -	REVISED -			317	45BR-2	PEORIA	122	19	
PLOT SCALE = #SCALE#		CHECKED -	REVISED -			SCALE: 1" = 100' SHEET NO. 1 OF 1 SHEETS STA. --- TO STA. ---					
PLOT DATE = #DATE#		DATE - 10-15-2010	REVISED -			ILLINOIS FED. AID PROJECT CONTRACT NO. 68719					