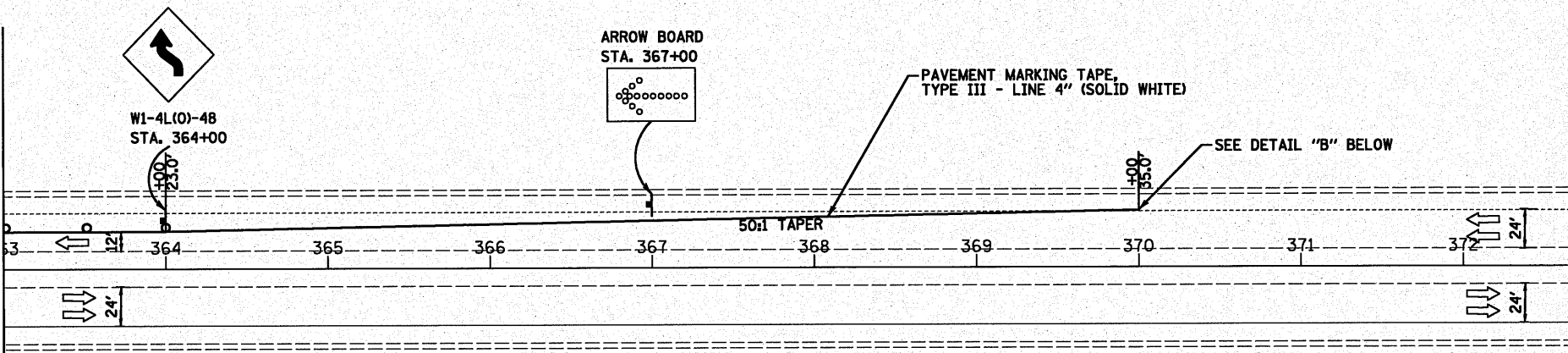

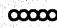





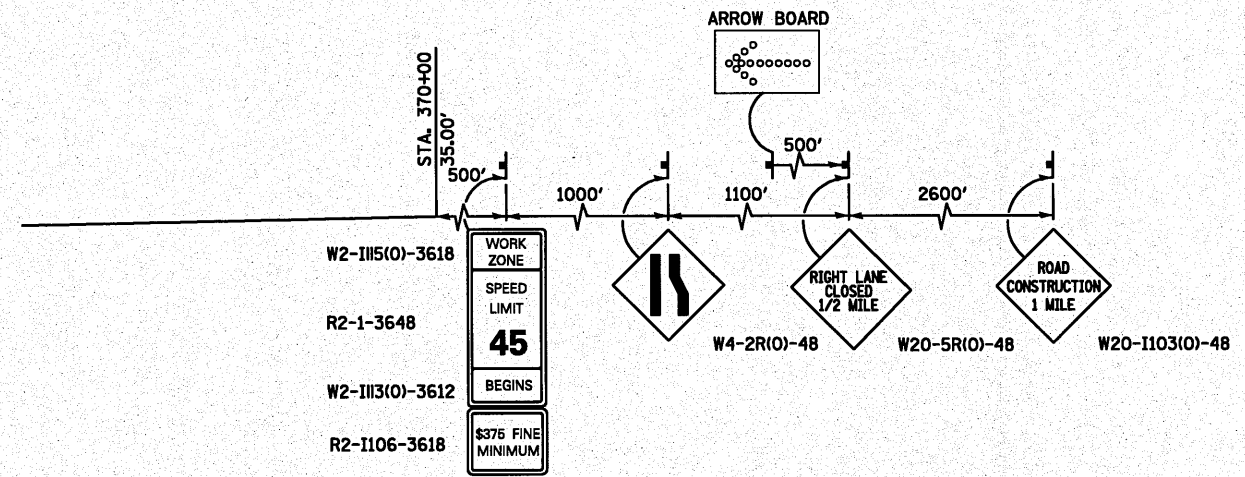


MATCH LINE STA. 363+00.00

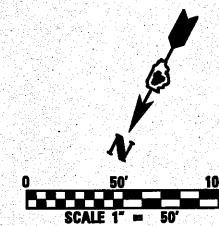


LEGEND

-  WORK AREA
-  IMPACT ATTENUATORS, TEMPORARY (FULLY REDIRECTIVE, NARROW), TEST LEVEL 3
-  TYPE III BARRICADE
-  TEMPORARY CONCRETE BARRIER
-  DRUM WITH STEADY BURN MONODIRECTIONAL LIGHT/
-  DIRECTION INDICATOR BARRICADE WITH STEADY BURN MONODIRECTIONAL LIGHT
-  SIGN



DETAIL "B"



FILE NAME =	USER NAME = #USER#	DESIGNED - SEW	REVISED -	STATE OF ILLINOIS DEPARTMENT OF TRANSPORTATION	MAINTENANCE OF TRAFFIC PLANS - STAGE 2 US ROUTE 24 OVER LAMARSH CREEK	F.A. RTE.	SECTION	COUNTY	TOTAL SHEETS	SHEET NO.	
#FILE#		DRAWN - SEW	REVISED -			317	45BR-2	PEORIA	122	36	
	PLOT SCALE = #SCALE#	CHECKED - FML	REVISED -			CONTRACT NO. 68719					
	PLOT DATE = #DATE#	DATE - 10-15-2010	REVISED -			ILLINOIS FED. AID PROJECT					
					SCALE: 1" = 50'		SHEET NO. 5 OF 5 SHEETS		STA. 363+00 TO STA. 372+50		