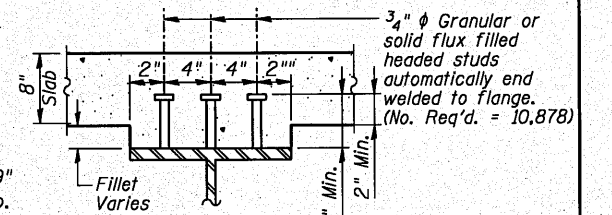
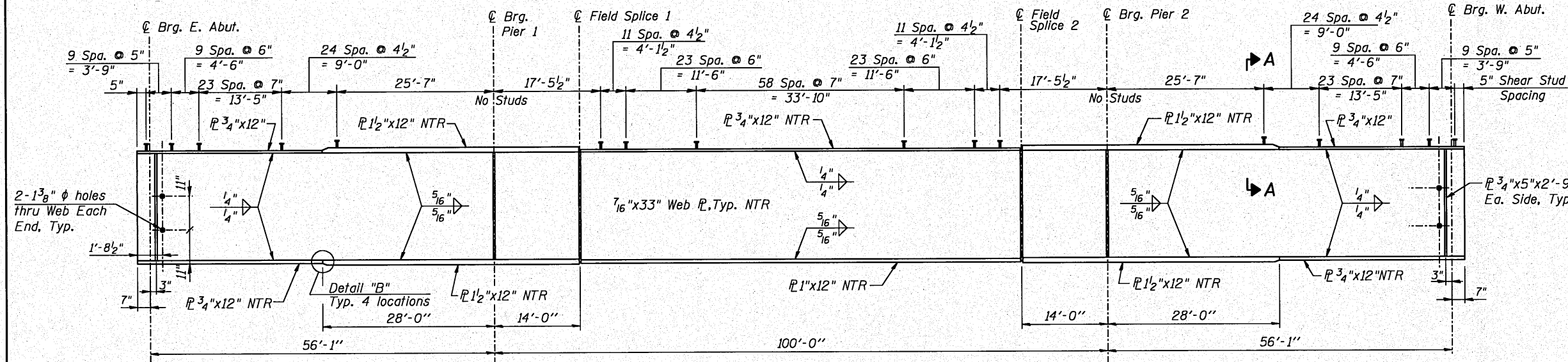
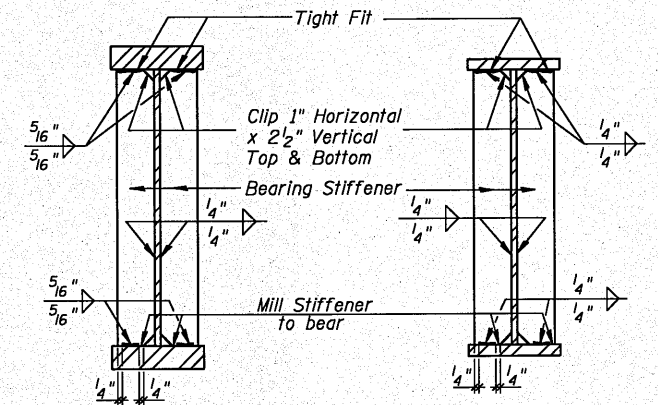


STATE OF ILLINOIS
DEPARTMENT OF TRANSPORTATION



SECTION A-A

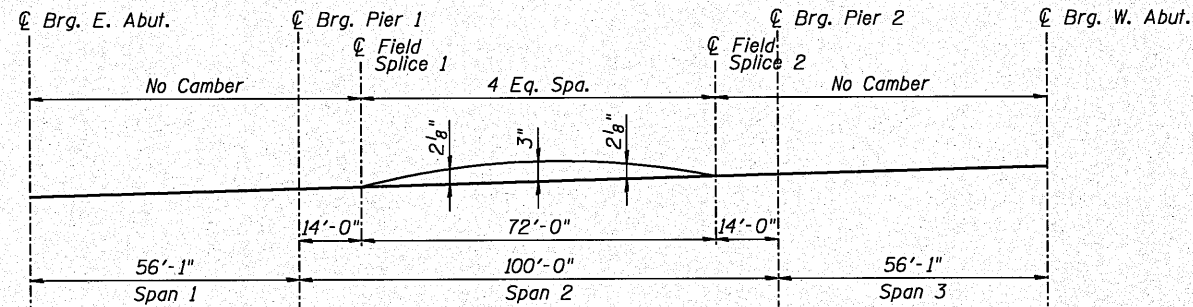


SECTION AT PIER

SECTION AT ABUTMENT

TYPICAL GIRDER ELEVATION

TOP OF GIRDER WEB ELEVATIONS (For Fabrication only)						
Girder No.	¢ Brg. E. Abut.	¢ Brg. Pier 1	¢ Splice 1	¢ Splice 2	¢ Brg. Pier 2	¢ Brg. W. Abut.
1	464.17	464.69	464.82	465.51	465.66	466.23
2	464.37	464.88	465.01	465.71	465.85	466.42
3	464.52	465.04	465.17	465.86	466.01	466.58
4	464.64	465.15	465.28	465.98	466.12	466.69
5	464.56	465.07	465.20	465.90	466.04	466.61
6	464.46	464.98	465.10	465.80	465.94	466.52
7	464.35	464.86	464.99	465.69	465.83	466.40
8	464.38	464.90	465.03	465.72	465.87	466.44
9	464.57	465.09	465.22	465.91	466.06	466.63
10	464.75	465.26	465.39	466.09	466.23	466.80
11	464.90	465.41	465.54	466.24	466.38	466.96
12	464.86	465.38	465.51	466.20	466.35	466.92
13	464.78	465.30	465.42	466.12	466.26	466.84
14	464.67	465.18	465.31	466.00	466.15	466.72



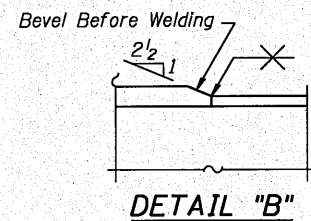
CAMBER DIAGRAM

NOTES

- Work this Sheet with Sheet S21 & S23 of 39.
- Load carrying components designated "NTR" shall conform to the Supplemental Requirements for Notch Toughness, Zone 2.
- All Structural Steel on this Sheet shall be AASHTO M270 Grade 50W Steel.

BILL OF MATERIAL

Item	Unit	Total
Stud Shear Connectors	Each	10,878



DETAIL "B"

I:\Jobs\2018\201803014\Lead\Auto\Structural\Drawings\22_GIRDER_ELEVATION.dgn 10/18/2018

DESIGNED	J.Z.
CHECKED	J.A.Z.
DRAWN	S.R.K.
CHECKED	J.A.Z.

GR&EF 8501 W. Higgins Road, Suite 280
Chicago, Illinois 60631
(773) 399-0112

GIRDER ELEVATION					
U.S. ROUTE 24 & IL ROUTE 9 OVER LA MARSH CREEK					
STATION 337+89.89					
STRUCTURE NO. 072-0228					
SHEET NO.	F.A.P. RTE.	SECTION	COUNTY	TOTAL SHEETS	SHEET NO.
S22 OF 39 SHEETS	317	45BR-2	PEORIA	122	70
CONTRACT NO. 68719			ILLINOIS FED. AID PROJECT		