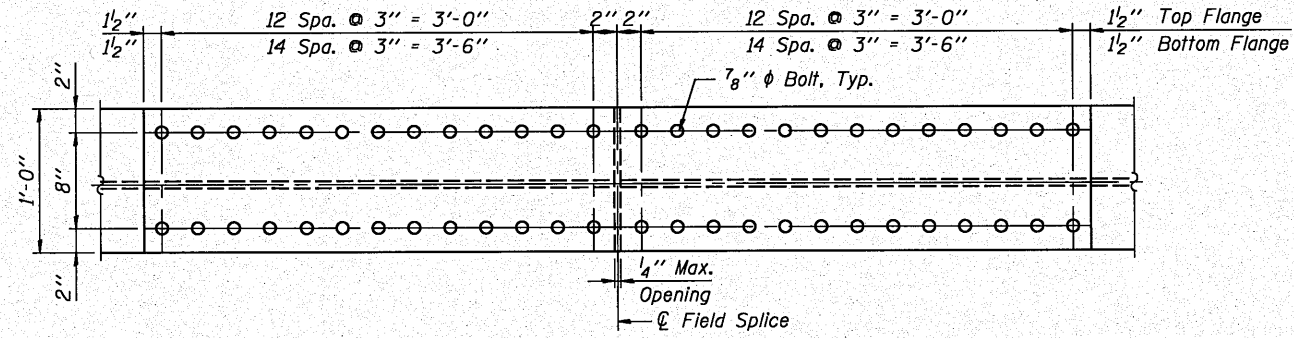
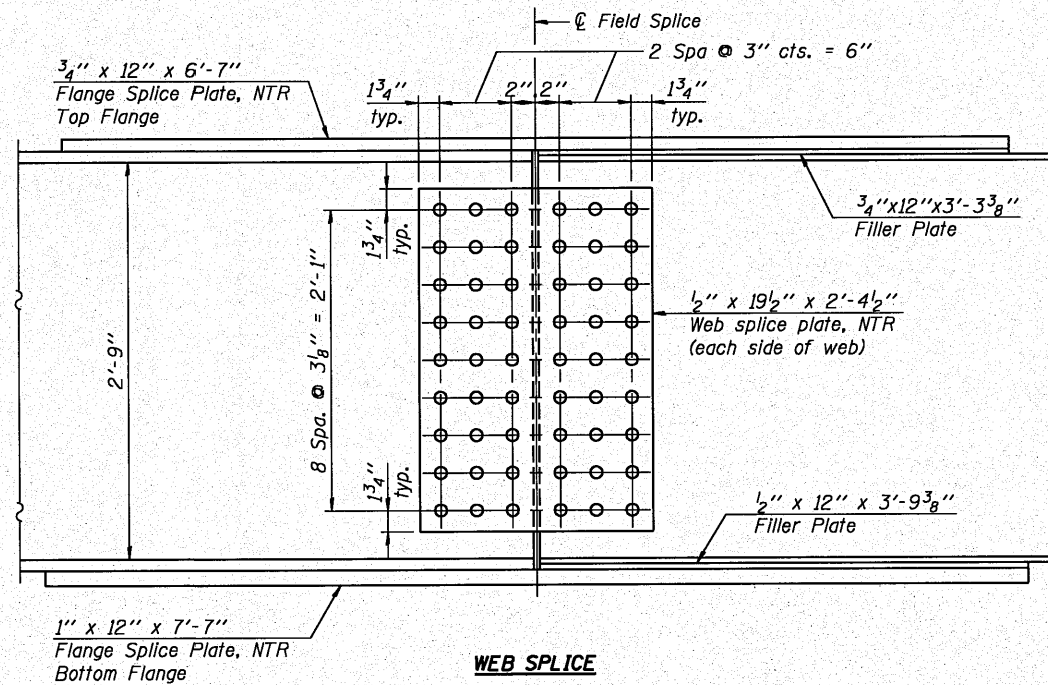


STATE OF ILLINOIS
DEPARTMENT OF TRANSPORTATION

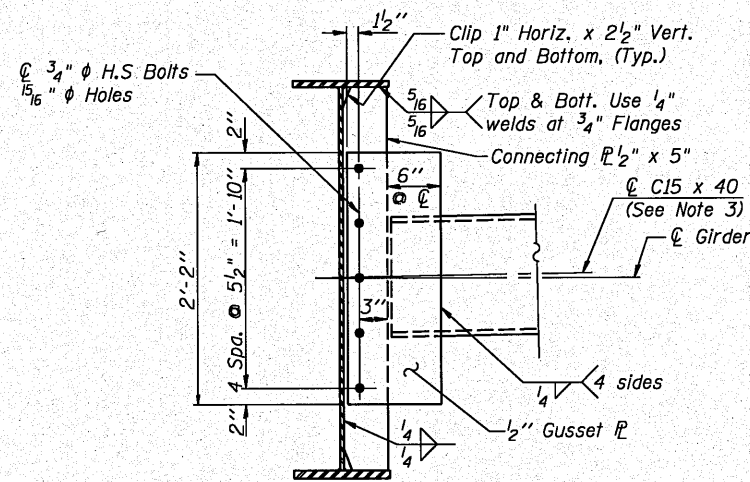


FLANGE SPLICE

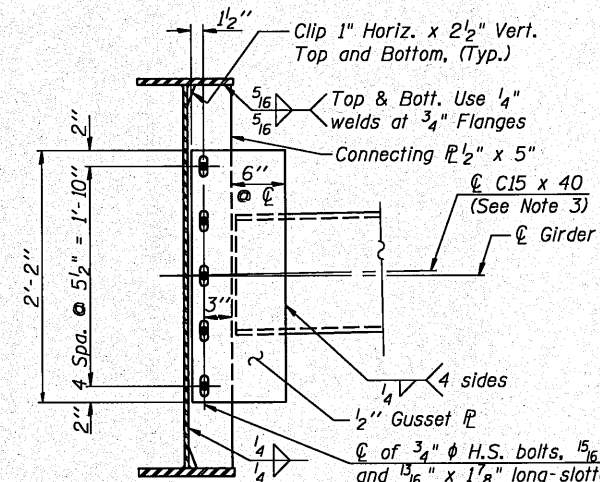


FIELD SPLICES 1 & 2

(Looking South at Field Splice 1
Looking North at Field Splice 2)



INTERIOR DIAPHRAGM - D1
(108 Required)



INTERIOR DIAPHRAGM - D2
(9 Required)

NOTES

- All Structural Steel on this Sheet shall be AASHTO M270 Grade 50W.
- Two hardened washers are required for each set of oversized holes.
- Alternate C15x50 diaphragm channels are permitted to facilitate material acquisition. Calculated weight of structural steel is based on C15x40. The alternate, if utilized, shall be provided at no extra cost to the Department.

FIELD SPLICES AND DIAPHRAGM DETAILS					
U.S. ROUTE 24 & IL ROUTE 9 OVER LA MARSH CREEK					
STATION 337+89.89			STRUCTURE NO. 072-0228		
SHEET NO.	F.A.P. RTE.	SECTION	COUNTY	TOTAL SHEETS	SHEET NO.
S23 OF 39 SHEETS	317	45BR-2	PEORIA	122	71
			CONTRACT NO. 68719		
10-15-10			ILLINOIS FED. AID PROJECT		

h:\job\2010\201023014\road\detail\structural\ldgn\072-0228-FIELD SPLICES.dgn
 12/18/2010

DESIGNED	J.Z.
CHECKED	J.A.Z.
DRAWN	R.B.H.
CHECKED	J.A.Z.

GRÄEF 8501 W. Higgins Road Suite 280
Chicago, Illinois 60631
(773) 399-0112