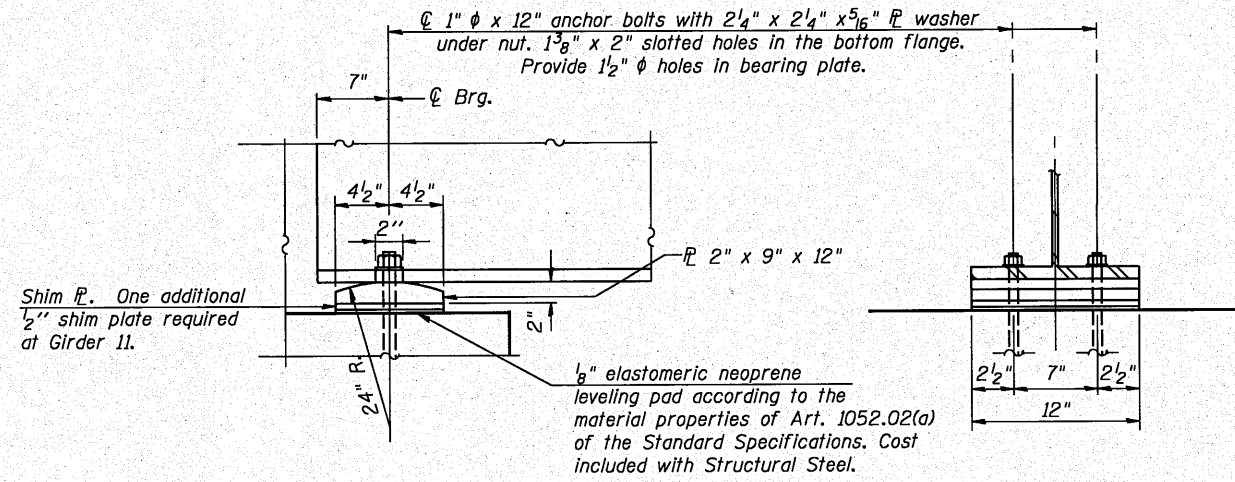
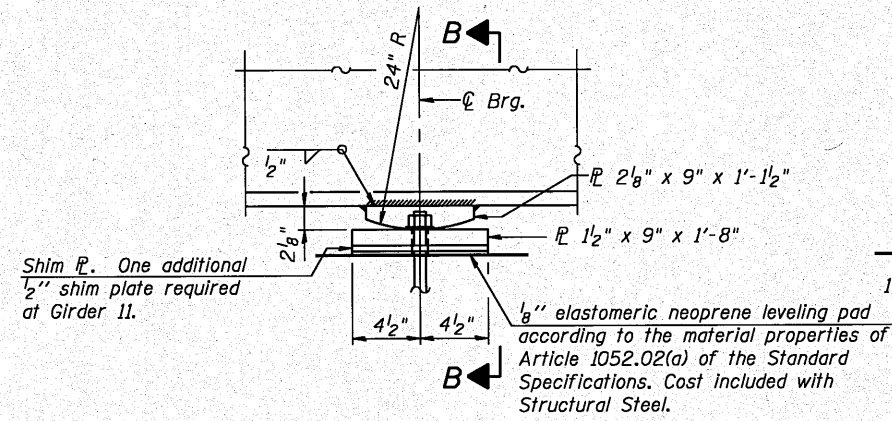


STATE OF ILLINOIS
DEPARTMENT OF TRANSPORTATION



FIXED BEARING AT ABUTMENTS



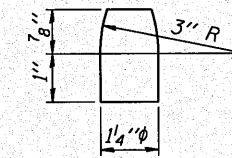
ELEVATION AT PIERS

SECTION B-B

FIXED BEARING AT PIERS

NOTES:

- Anchor bolts shall be ASTM F1554 all-thread (or an Engineer-approved alternate material) of the grade(s) and diameter(s) specified. ASTM A307 Grade C anchor bolts may be used in lieu of ASTM F1554 Grade 36 (Fy=36ksi). The corresponding specified grade of AASHTO M314 anchor bolts may be used in lieu of ASTM F1554.
- Anchor bolts at fixed bearings may be either cast in place or installed in holes drilled after the supported member is in place.
- Drilled and set anchor bolts shall be installed according to Article 521.06 of the Standard Specifications.
- The structural steel plates of the Bearing Assembly shall conform to the requirements of AASHTO M 270 Grade 50W.
- Two 1/8 inch adjusting shims shall be provided for each bearing in addition to all other plates or shims and placed as shown on bearing details.



PINTLE

BILL OF MATERIAL

Item	Unit	Total
Anchor Bolts, 1"	Each	112

h:\john\2010\201002014\road\dot-structural\fdgn\02\0204_BRGS.&.STEEL_DETAILS.dgn 10/18/2010

DESIGNED	J.Z.
CHECKED	J.A.Z.
DRAWN	R.B.H.
CHECKED	J.A.Z.

GR&EF 8501 W. Higgins Road, Suite 280
Chicago, Illinois 60631
(773) 399-0112

BEARING DETAILS					
U.S. ROUTE 24 & IL ROUTE 9 OVER LA MARSH CREEK					
STATION 337+89.89 STRUCTURE NO. 072-0228					
SHEET NO.	F.A.P. RTE.	SECTION	COUNTY	TOTAL SHEETS	SHEET NO.
S24 OF 39 SHEETS	317	45BR-2	PEORIA	122	72
			CONTRACT NO. 68719		
10-15-10			ILLINOIS FED. AID PROJECT		