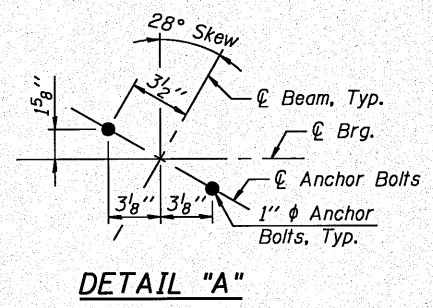
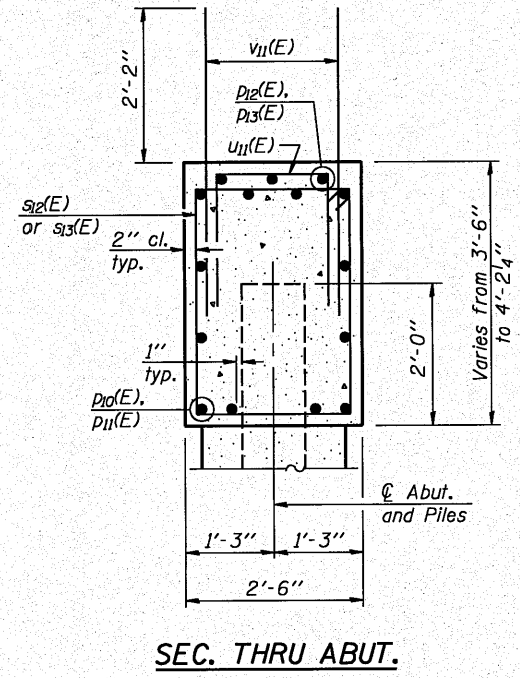


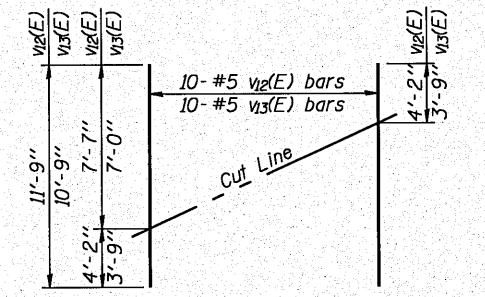
STATE OF ILLINOIS  
DEPARTMENT OF TRANSPORTATION



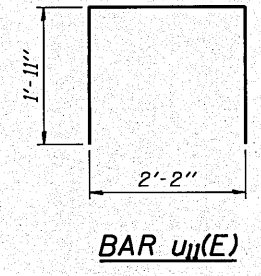
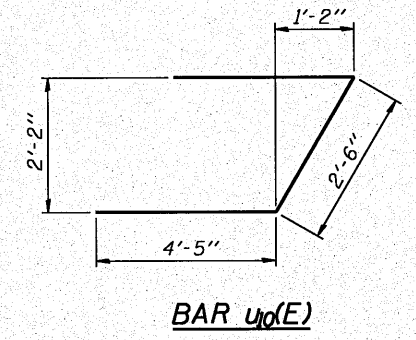
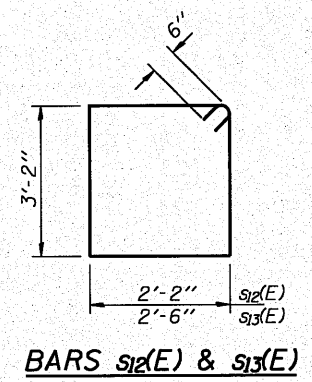
**TWO ABUTMENTS  
BILL OF MATERIAL**

Bar	No.	Size	Length	Shape
$h_0(E)$	128	#6	12'-2"	—
$p_{10}(E)$	48	#8	31'-6"	—
$p_{11}(E)$	48	#8	33'-2"	—
$p_{12}(E)$	6	#5	32'-10"	—
$p_{13}(E)$	6	#5	25'-7"	—
$s_{12}(E)$	322	#5	11'-8"	□
$s_{13}(E)$	8	#5	12'-4"	□
$u_{10}(E)$	16	#6	11'-4"	┌
$u_{11}(E)$	120	#5	6'-0"	┐
$v_{11}(E)$	450	#5	4'-4"	—
$v_{12}(E)$	20	#5	11'-9"	—
$v_{13}(E)$	20	#5	10'-9"	—
Structure Excavation	Cu. Yd.		730	
Concrete Structures	Cu. Yd.		91.0	
Concrete Encasement	Cu. Yd.		12.2	
Reinforcement Bars, Epoxy Coated	Pound		18,540	
Bar Splicers	Each		24	
Furnishing Steel Piles HP12x53	Foot		1,411	
Driving Piles	Foot		1,411	
Test Pile Steel HP12x53	Each		2	
Piles Shoes	Each		36	

For details of Bar Splicers, see sheet S31 of 39.  
For details of piles and Concrete Encasement, see sheet S30 of 39.



**CUTTING DIAGRAM**  
Order  $v_{12}(E)$  &  $v_{13}(E)$  full length. Cut as shown and use remainder of bars in opposite face.



I:\Jobs\21010\_2010\2014\_road\vdot\_structural\vdot\09\_527\_ABUTMENT\_DETAILS.dgn 10/18/2010

DESIGNED	E.E.J.
CHECKED	J.A.Z.
DRAWN	E.E.J.
CHECKED	J.A.Z.

**GRÄEF** 8501 W. Higgins Road, Suite 280  
Chicago, Illinois 60631  
(773) 399-0112

ABUTMENT DETAILS					
U.S. ROUTE 24 & IL ROUTE 9 OVER LA MARSH CREEK					
STATION 337+89.89 STRUCTURE NO. 072-0228					
SHEET NO.	F.A.P. RTE.	SECTION	COUNTY	TOTAL SHEETS	SHEET NO.
S27 OF 39 SHEETS	317	45BR-2	PEORIA	122	75
			CONTRACT NO. 68719		
10-15-10			ILLINOIS FED. AID PROJECT		