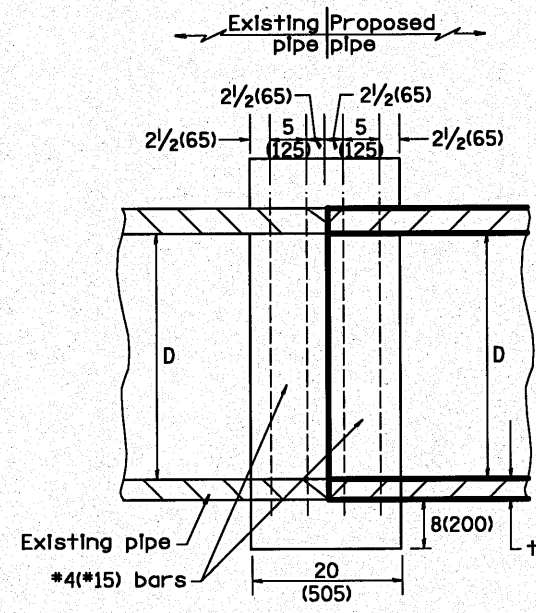
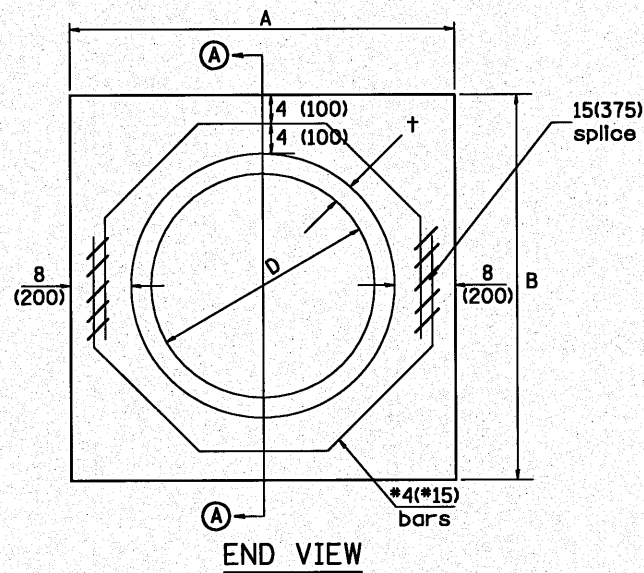


DATE	
BY	
DESIGNED	
PLOTTED	
NOTE BOOK	
NO.	

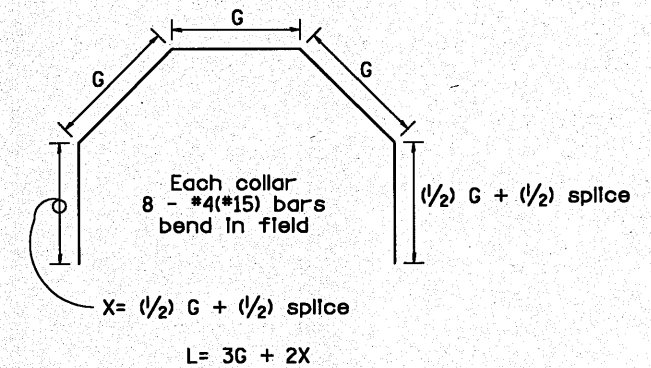
DATE	
BY	
DESIGNED	
PLOTTED	
NOTE BOOK	
NO.	



SECTION A - A



END VIEW



Each Collar								
Reinforcement Bars								
D	+	A	B	CL. SI CONC.	G	X	L	Weight
in (mm)	in (mm)	ft (m)	ft (m)	cu. yd. (m <sup>3</sup> )	in (mm)	in (mm)	ft (m)	lb (kg)
12 (300)	2.00 (51)	2.67 (0.814)	2.67 (0.814)	0.4 (0.270)	9 15/16 (253)	12 7/16 (317)	4.57 (1.393)	24 (11)
15 (375)	2.25 (57)	2.96 (0.902)	2.96 (0.902)	0.4 (0.315)	11 3/8 (290)	13 3/16 (335)	5.05 (1.541)	27 (12)
18 (450)	2.50 (64)	3.25 (0.991)	3.25 (0.991)	0.5 (0.362)	12 13/16 (327)	13 7/8 (354)	5.54 (1.689)	30 (14)
21 (525)	2.75 (70)	3.54 (1.079)	3.54 (1.079)	0.5 (0.411)	14 1/4 (364)	14 5/8 (372)	6.02 (1.836)	32 (15)
24 (600)	3.00 (76)	3.83 (1.167)	3.84 (1.167)	0.6 (0.460)	15 11/16 (401)	15 5/16 (391)	6.51 (1.984)	35 (16)
27 (675)	3.25 (83)	4.13 (1.259)	4.13 (1.259)	0.7 (0.516)	17 1/4 (438)	16 1/16 (409)	6.99 (2.131)	37 (17)
30 (750)	3.50 (89)	4.42 (1.347)	4.42 (1.347)	0.7 (0.570)	18 11/16 (475)	16 3/4 (428)	7.48 (2.279)	40 (18)
33 (825)	3.75 (95)	4.71 (1.436)	4.71 (1.436)	0.8 (0.624)	20 1/8 (512)	17 1/2 (446)	7.96 (2.426)	43 (19)
36 (900)	4.00 (102)	5.00 (1.524)	5.00 (1.524)	0.9 (0.682)	21 9/16 (549)	18 3/16 (465)	8.44 (2.574)	45 (20)
42 (1050)	4.50 (114)	5.58 (1.701)	5.58 (1.701)	1.0 (.800)	24 7/16 (622)	19 3/4 (501)	9.41 (2.869)	50 (23)
48 (1200)	5.00 (127)	6.17 (1.881)	6.17 (1.881)	1.2 (0.930)	27 5/16 (696)	21 3/16 (538)	10.38 (3.164)	55 (25)

GENERAL NOTES

1. THE COLLAR SHALL BE CONSTRUCTED ENTIRELY OF CLASS SI CONCRETE IN ACCORDANCE WITH THE APPLICABLE PORTIONS OF SECTION 503 OF THE STANDARD SPECIFICATIONS. REINFORCEMENT BARS SHALL CONFORM TO SECTION 508.

PIPE CULVERT EXTENSION COLLAR (WITHOUT END SECTION)

QUANTITIES	
CALC. BY:	R. J. D. 2-2-98
CHECKED BY:	R. D. H. 2-6-98

QUANTITY CALCULATIONS ARE ON FILE AT THE DISTRICT 4 OFFICE, BUREAU OF PROJECT IMPLEMENTATION, DOCUMENTATION SECTION

FILE NAME	USER NAME	DESIGNED ST	REVISED	STATE OF ILLINOIS	DISTRICT 4 STANDARDS	F.A.P. RTE.	SECTION	COUNTY	TOTAL SHEETS	SHEET NO.
		DRAWN ST	REVISED	DEPARTMENT OF TRANSPORTATION	US-24 OVER LAMARSH CREEK	317	45BR-2	PEORIA	122	91
		CHECKED FML	REVISED				542016			
		DATE 10-15-2010	REVISED			SCALE: N.T.S.	SHEET NO. 4 OF 19 SHEETS	STA.	TO STA.	FED. ROAD DIST. NO. [ILLINOIS] FED. AID PROJECT

All dimensions are in inches (millimeters) unless otherwise noted.