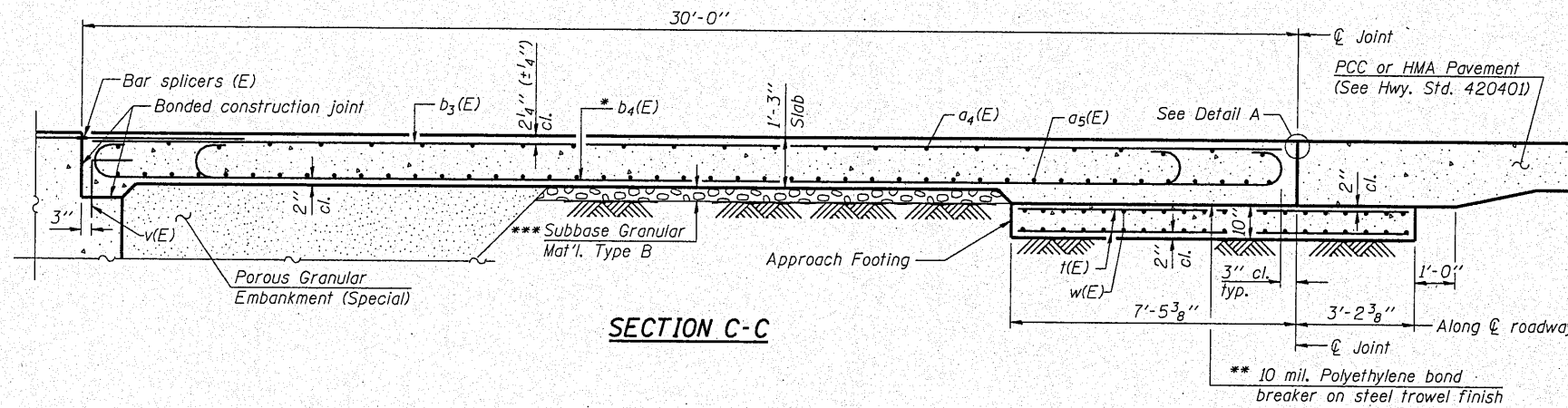
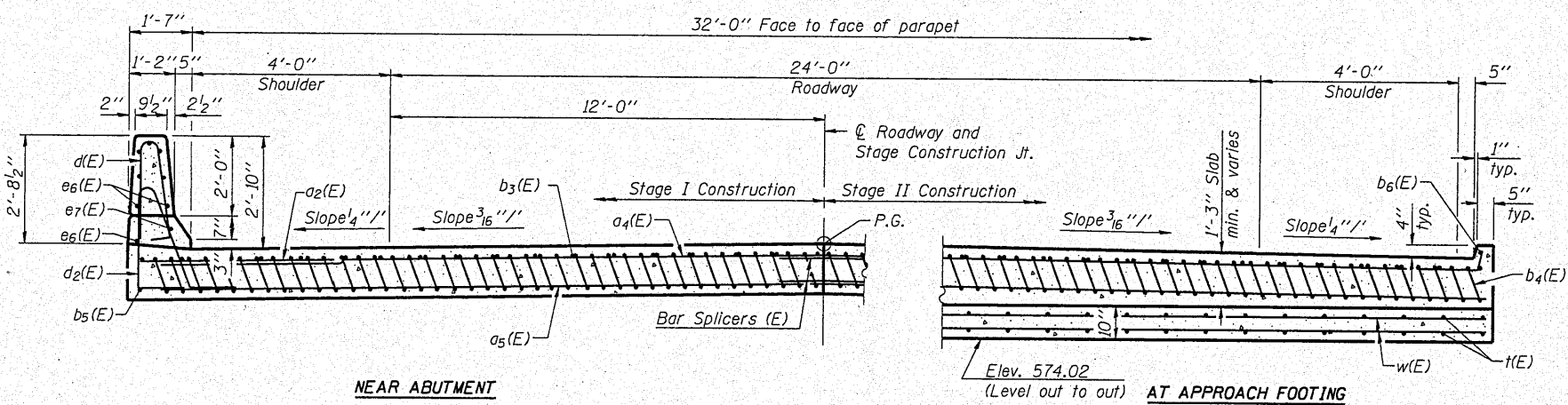


STATE OF ILLINOIS  
DEPARTMENT OF TRANSPORTATION

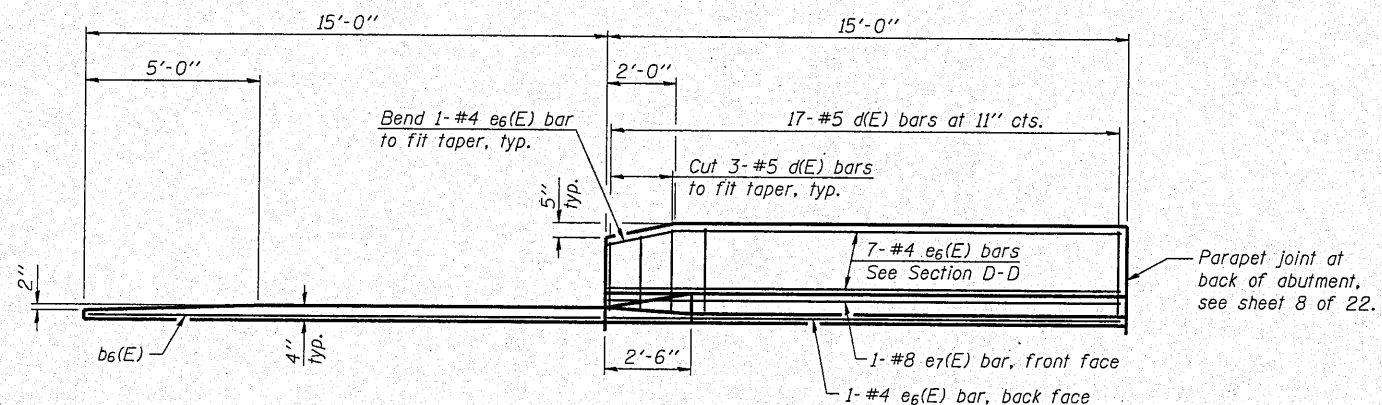
Notes:  
See sheet 10 of 22 for Detail A and View B-B.  
Approach slab and parapet concrete shall be paid for as Concrete Superstructure.  
Approach footing concrete shall be paid for as Concrete Structures.  
Reinforcement shall be paid for as Reinforcement Bars, Epoxy Coated.  
For v(E) bar details, see sheet 8 of 22.  
The approach footing maximum applied service bearing pressure (Qmax) = 2.0 ksf.  
For bar splicer details, see sheet 18 of 22.  
Cost of excavation for approach footing included with Concrete Structures.  
For Porous Granular Embankment, (Special) and drainage treatment details, see sheet 1 of 22.  
For additional parapet details, see sheet 8 of 22.



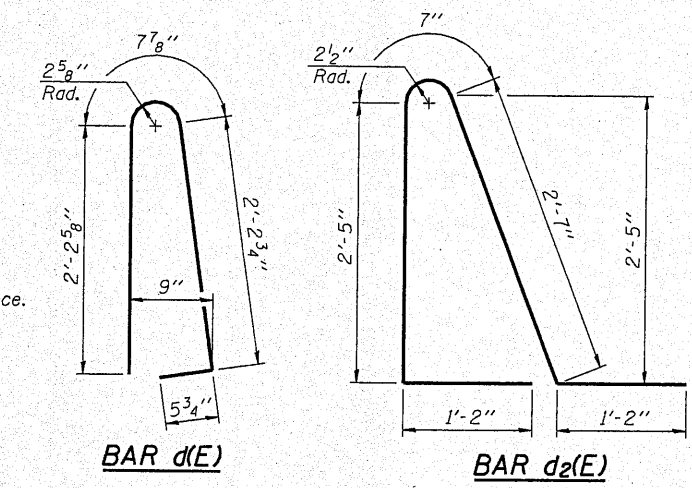
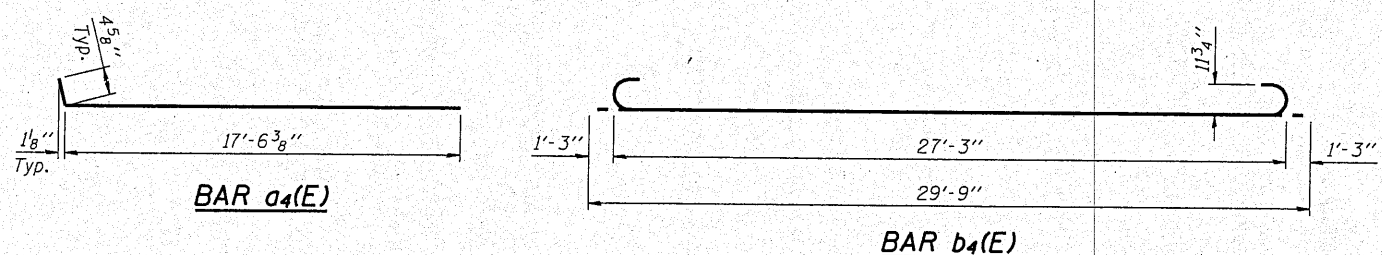
SECTION C-C



SECTION D-D  
(See Plan for dimensions not shown)



VIEW E-E



\* Tilt #9 b4(E) bars as required to maintain clearance.  
\*\* Cost included with Concrete Superstructure.  
\*\*\* See Rdwy. Plans for quantity.

TWO APPROACHES  
BILL OF MATERIAL

Bar	No.	Size	Length	Shape
a2(E)	48	#6	6'-6"	
a4(E)	100	#4	17'-11"	
a5(E)	184	#5	17'-8"	
b3(E)	56	#4	29'-8"	
b4(E)	164	#9	29'-9"	
b5(E)	4	#4	14'-8"	
b6(E)	4	#4	14'-1"	
d(E)	68	#5	5'-7"	
d2(E)	68	#5	7'-11"	
e6(E)	32	#4	14'-8"	
e7(E)	4	#8	14'-8"	
i(E)	136	#4	10'-3"	
w(E)	160	#5	17'-8"	
Concrete Superstructure		Cu. Yd.	107.2	
Concrete Structures		Cu. Yd.	22.2	
Reinforcement Bars, Epoxy Coated		Pound	28140	

MAUREN STUTZ, INC.  
ENGINEERS SURVEYORS

DESIGNED - BAS  
CHECKED - KEF  
DRAWN - SGM  
CHECKED - BAS

(Sheet 2 of 2)  
BRIDGE APPROACH SLAB DETAILS  
STRUCTURE NO. 036-0070

SHEET NO. 11 22 SHEETS	F.A.P. RTE.	SECTION	COUNTY	TOTAL SHEETS	SHEET NO.
	657	(116-C)BR-1	HENDERSON	56	28
CONTRACT NO. 68761					
FED. ROAD DIST. NO. - ILLINOIS FED. AID PROJECT					