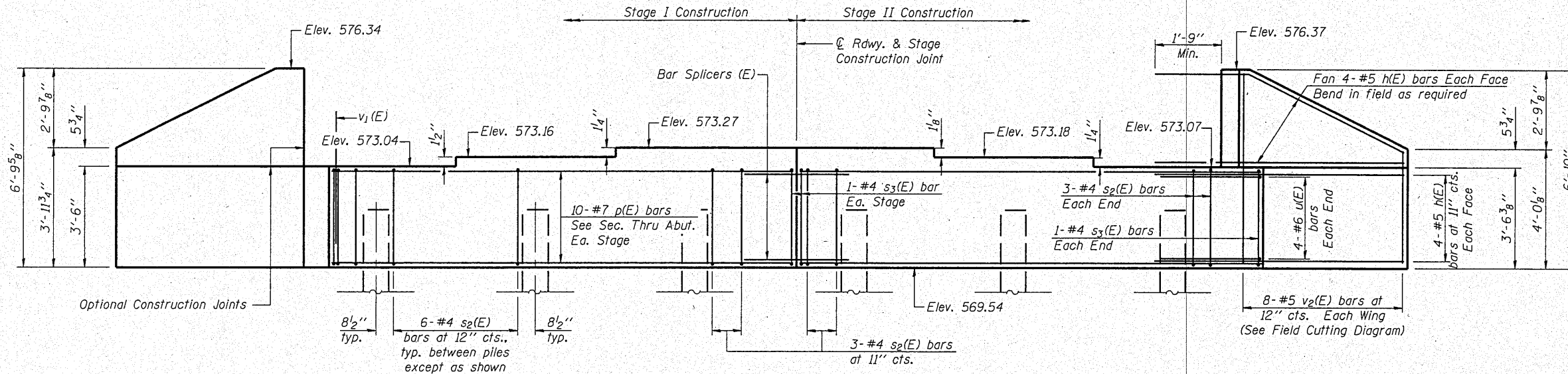
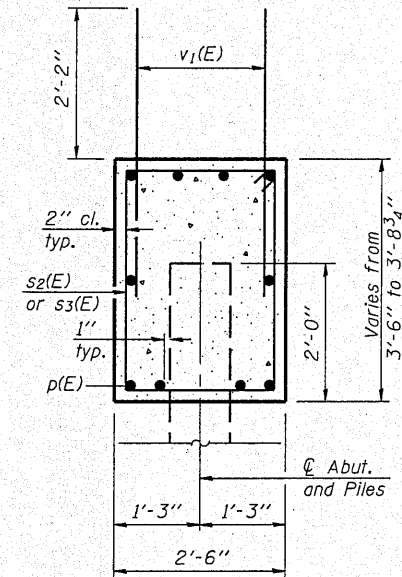


STATE OF ILLINOIS
DEPARTMENT OF TRANSPORTATION

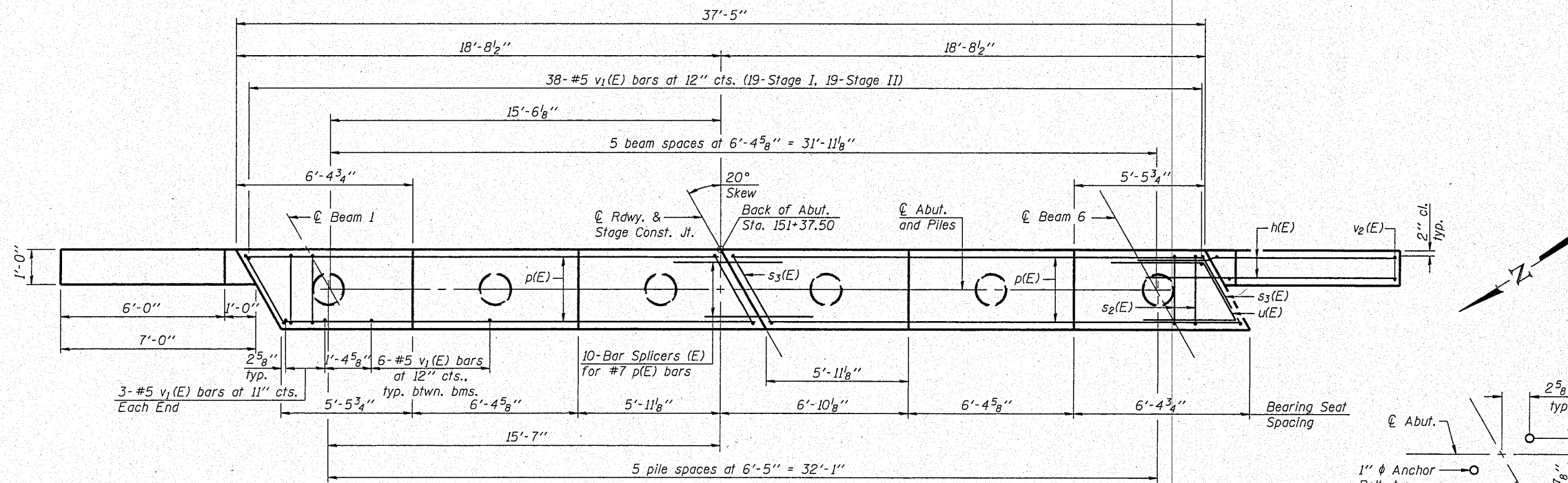
Notes:
Pour steps monolithically with cap.
Space reinforcement to miss anchor bolts.



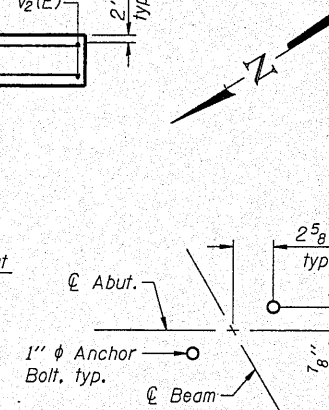
ELEVATION



SEC. THRU ABUT.



PLAN



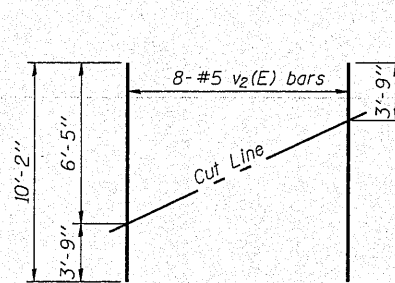
TYP. ANCHOR BOLT LAYOUT

PILE DATA

Type: Metal Shell-14 in. dia. x 0.312 in. walls
Nominal Required Bearing: 295 kips
Factored Resistance Available: 162 kips
Est. Length: 53 ft.
No. Production Piles: 5
No. Test Piles: 1

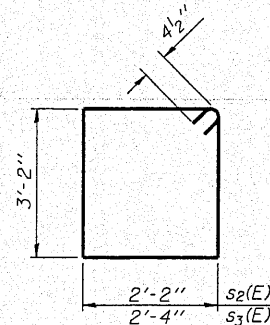


DESIGNED - BAS
CHECKED - KEF
DRAWN - SGM
CHECKED - BAS

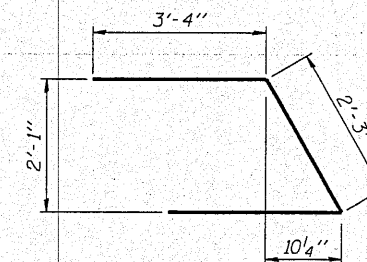


FIELD CUTTING DIAGRAM

Order v2(E) full length. Cut as shown and use remainder of bars in opposite face.



BARS s2(E) & s3(E)



BAR u(E)

BILL OF MATERIAL

Bar	No.	Size	Length	Shape
h(E)	32	#5	9'-3"	—
p(E)	20	#7	18'-4"	—
s2(E)	36	#4	11'-5"	□
s3(E)	4	#4	11'-9"	□
u(E)	8	#6	8'-11"	┘
v1(E)	74	#5	4'-4"	—
v2(E)	16	#5	10'-2"	—
Structure Excavation		Cu. Yd.	79	
Concrete Structures		Cu. Yd.	14.9	
Reinforcement Bars, Epoxy Coated		Pound	1980	
Furnishing Metal Shell Piles, 14"x0.312"		Foot	265	
Driving Piles		Foot	265	
Test Pile, Metal Shells		Each	1	

For details of Bar Splicers, see sheet 18 of 22.
For details of piles, see sheet 17 of 22.

EAST ABUTMENT
STRUCTURE NO. 036-0070

SHEET NO. 15 22 SHEETS	F.A.P. RTE. 657	SECTION (116-C)BR-1	COUNTY HENDERSON	TOTAL SHEETS 56	SHEET NO. 32
	CONTRACT NO. 68761				
FED. ROAD DIST. NO. ILLINOIS FED. AID PROJECT					