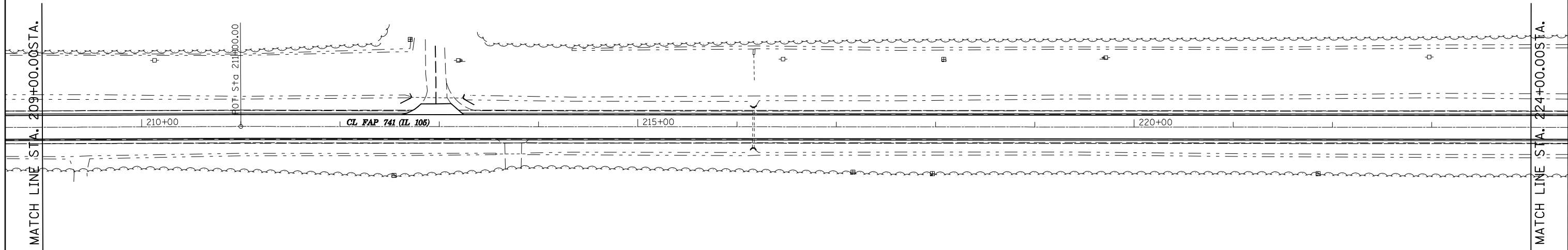
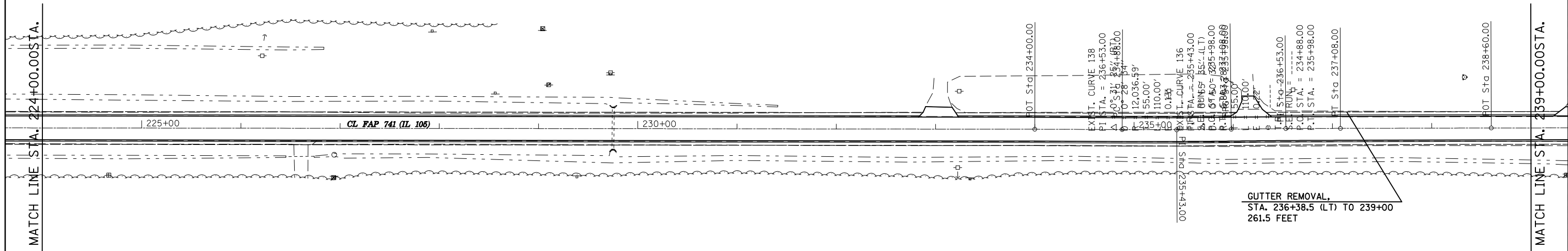


SEC 6 - T 17 N - R 6 E - 3RD PM



SEC 1 - T 17 N - R 5 E - 3RD PM

SEC 6 - T 17 N - R 6 E - 3RD PM



EXIST. CURVE 138
 P.I. STA. = 236+53.00
 Δ I = 0° 31' 25" (RT)
 Δ I = 0° 28' 34" (LT)
 R = 12,036.59'
 L = 55.00'
 P.C. STA. = 235+00.00
 P.T. STA. = 235+98.00

EXIST. CURVE 136
 P.I. STA. = 235+43.00
 Δ I = 0° 15' 55" (LT)
 Δ I = 0° 15' 00" (RT)
 R = 69,150.00'
 L = 55.00'
 P.C. STA. = 235+00.00
 P.T. STA. = 235+98.00

ST. STA. = 236+53.00
 S.E. RUN = 110.00'
 P.O. STA. = 234+88.00
 P.T. STA. = 235+98.00

POT Sta 238+60.00

GUTTER REMOVAL,
 STA. 236+38.5 (LT) TO 239+00
 261.5 FEET

SEC 1 - T 17 N - R 5 E - 3RD PM

FILE NAME = c:\pwwork\pwwork\backlesj\0155680\0570273-sht-Plan_50.dgn	USER NAME = bucklesj	DESIGNED -	REVISED -	STATE OF ILLINOIS DEPARTMENT OF TRANSPORTATION	PLAN SHEETS			F.A.P. RTE. 741	SECTION (75,8,28)RS-3	COUNTY Pigg	TOTAL SHEETS 202	SHEET NO. 22
PLOT SCALE = 100.0000' / IN.	CHECKED -	REVISED -	REVISED -		SCALE:	SHEET NO.	OF SHEETS	STA. 209+00 TO STA. 239+00	CONTRACT NO. 70273			
PLOT DATE = 10/14/2010	DATE -	REVISED -	REVISED -		ILLINOIS FED. AID PROJECT							

Sheet: 00
 Date: 10/14/2010
 Plot: 11:05:29