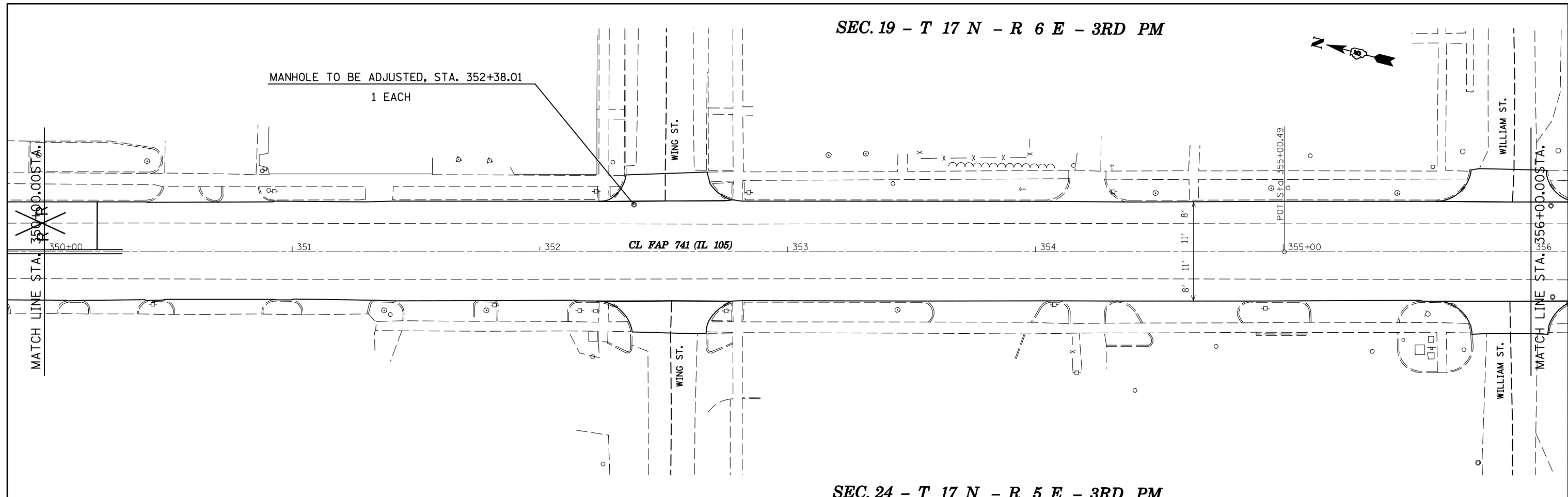
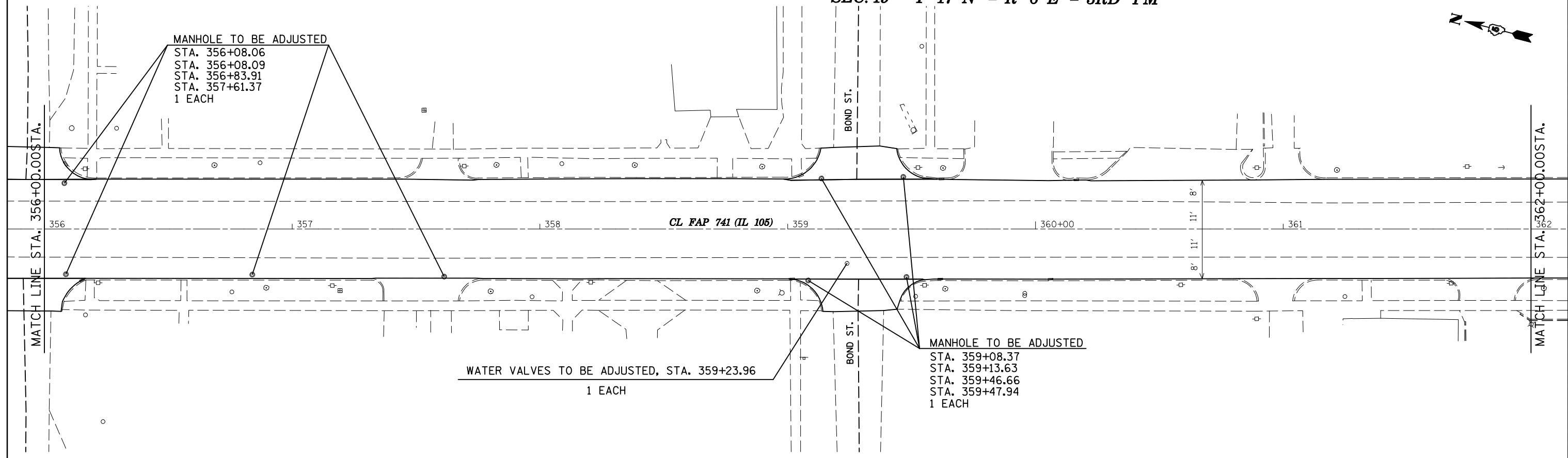


SEC. 19 - T 17 N - R 6 E - 3RD PM



SEC. 24 - T 17 N - R 5 E - 3RD PM

SEC. 19 - T 17 N - R 6 E - 3RD PM



SEC. 24 - T 17 N - R 5 E - 3RD PM

FILE NAME = c:\pwk\work\pwwid\backlesj\0155680\0570273-sht-Plan_20.dgn	USER NAME = bucklesj	DESIGNED -	REVISED -	STATE OF ILLINOIS DEPARTMENT OF TRANSPORTATION	PLAN SHEETS			F.A.P. RTE. 741	SECTION (75,8,28)RS-3	COUNTY Platt	TOTAL SHEETS 202	SHEET NO. 29
PLOT SCALE = 40.0000' / IN.	CHECKED -	REVISIED -	REVISIED -		SCALE:	SHEET NO.	OF	SHEETS	STA. 350+00 TO STA. 362+00	CONTRACT NO. 70273		
PLOT DATE = 10/14/2010	DATE -	REVISIED -	REVISIED -		ILLINOIS FED. AID PROJECT							