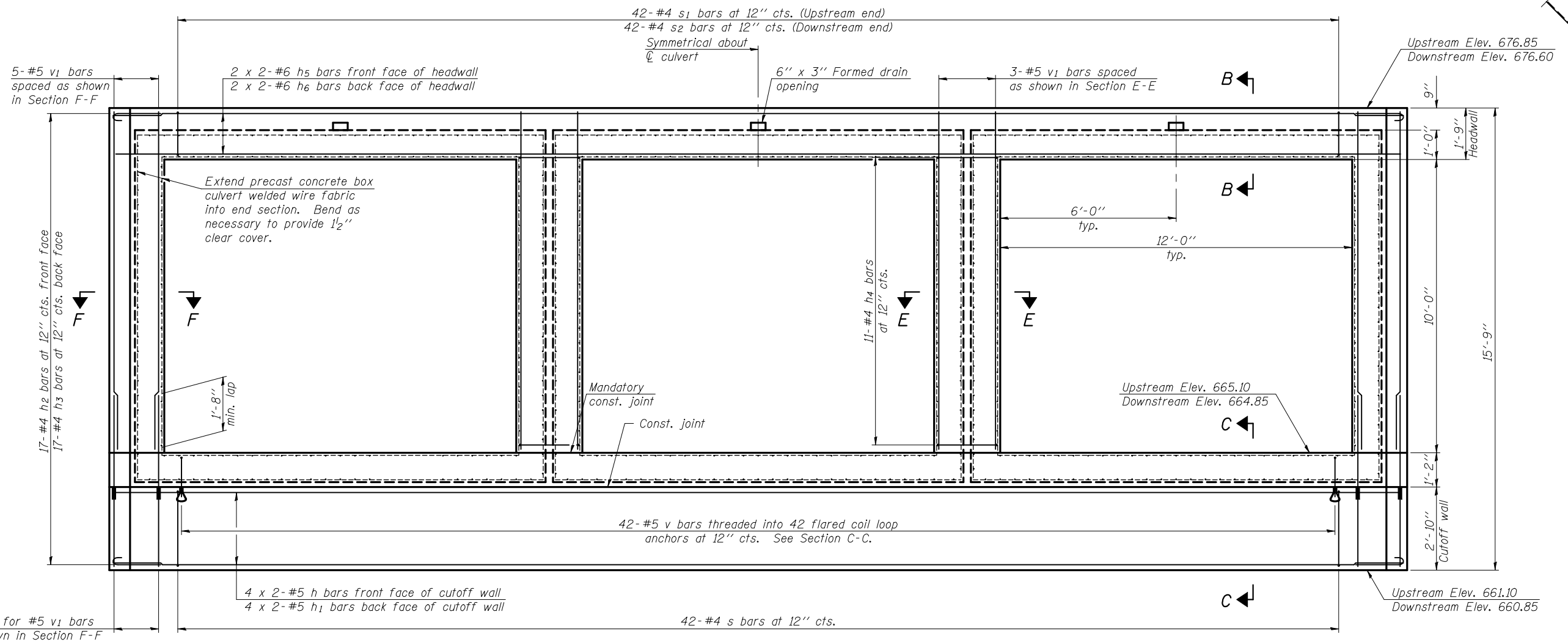


Notes:
See sheet 3 of 5 for typical wingwall elevation.
Bars indicated thus 4 x 2-#5 etc. indicates 4 lines of bars with 2 lengths per line.

PLAN



END ELEVATION

Wingwalls omitted in this view for clarity.
See sheet 3 of 5 for additional wingwall details.

MINIMUM BAR LAP

#5 - 2'-2"
#6 - 2'-7"

DESIGNED - DAVID L. GREIFZU
CHECKED - MICHAEL D. ROLAPE
DRAWN - MICHAEL B. MOSSMAN
CHECKED - D.L.G. / M.D.R.

EXAMINED
PASSED
Thomas J. Domagala
ENGINEER OF BRIDGE DESIGN
Ralph E. Anderson
ENGINEER OF BRIDGES AND STRUCTURES

DATE - DECEMBER 8, 2010

STATE OF ILLINOIS
DEPARTMENT OF TRANSPORTATION

BOX CULVERT END SECTION DETAILS
STRUCTURE NO. 074-2007

SHEET NO. 2 OF 5 SHEETS

F.A.S. RTE.	SECTION	COUNTY	TOTAL SHEETS	SHEET NO.
1531	10B-1 & 11B-1	PIATT	88	19
CONTRACT NO. 70458				

ILLINOIS FED. AID PROJECT