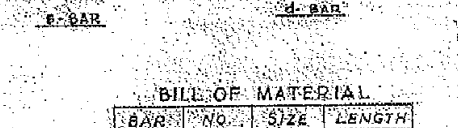
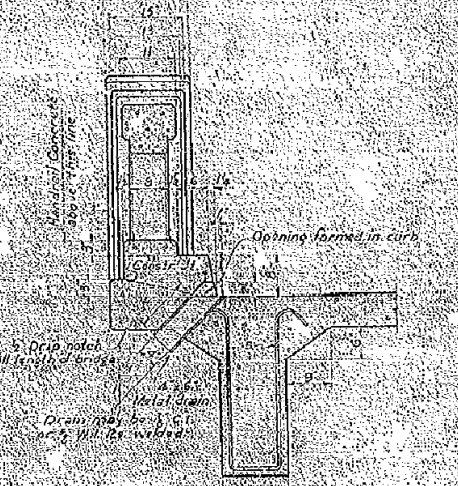
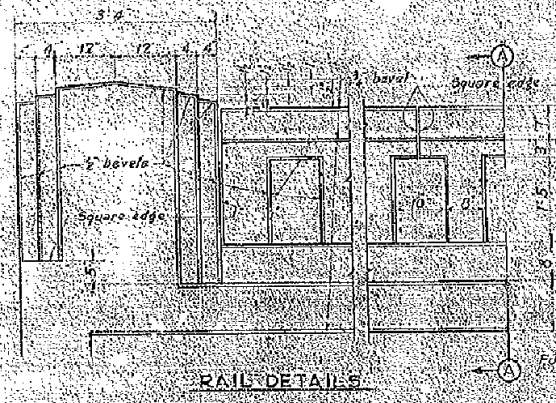
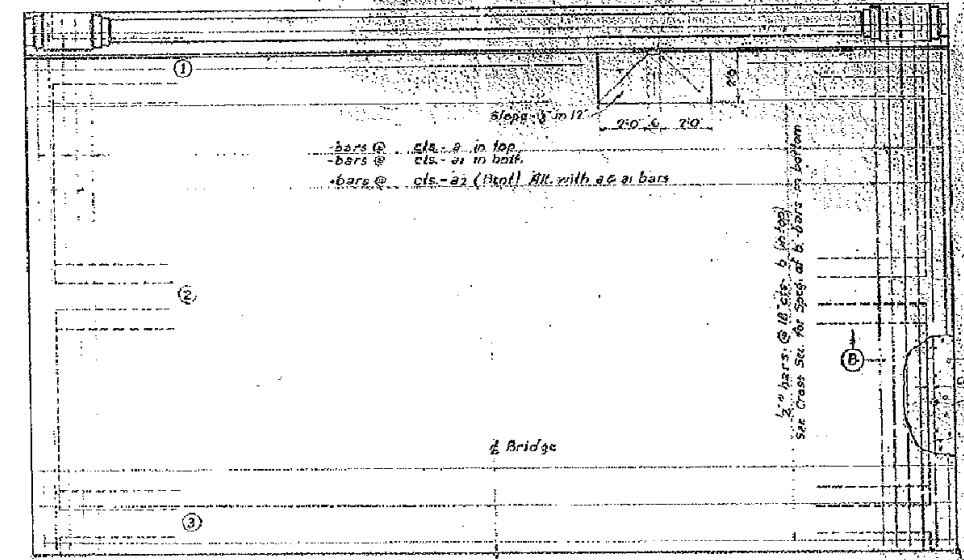
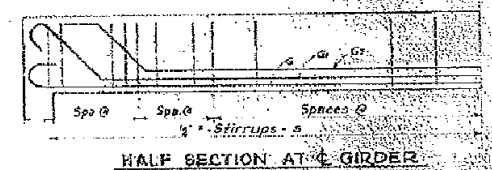
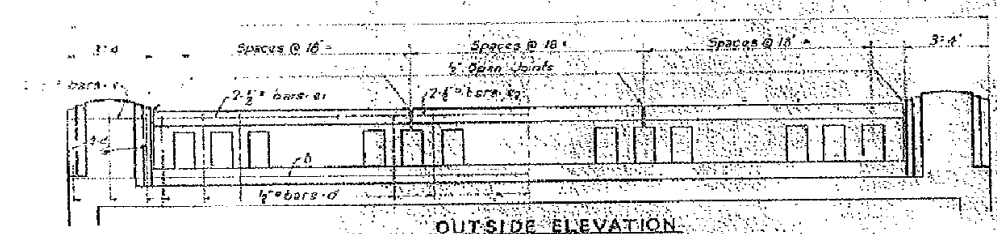


# THIS DETAIL IS INCLUDED FOR INFORMATION ONLY

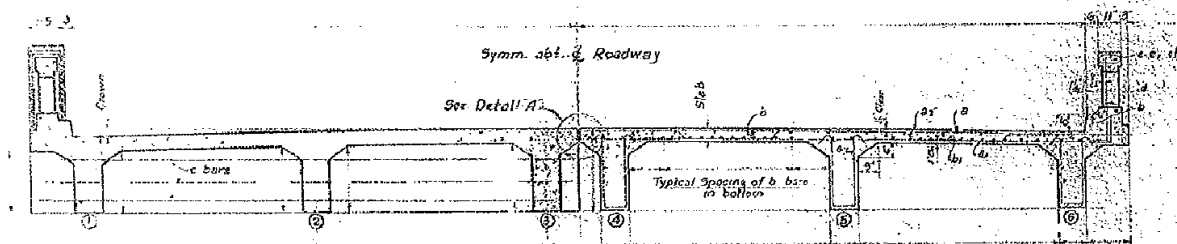
STATE OF ILLINOIS  
DEPARTMENT OF PUBLIC WORKS & BUILDINGS  
DIVISION OF HIGHWAYS



**BILL OF MATERIAL**

BAR	NO.	SIZE	LENGTH
a			
a1			
a2			
b			
b1			
c			
d			
e			2'-0"
e1			
f			
f1			
g			
g1			
g2			
h			

Handrail Concrete	Cu.Yds.
Class X Concrete	Cu.Yds.
Reinforcement Bars	Lbs.
Floor Drains	Each

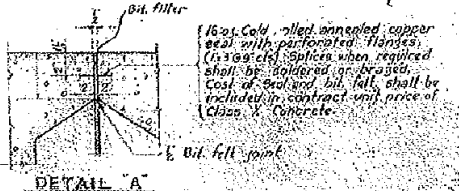


**AT ABUTMENTS**

**AT BRIDGE**

**SECTION B-B**

**GENERAL NOTES**  
Class X Concrete shall be used thru-out.  
The concrete floor shall be finished in accordance with Art. 37.3(e) of the 5th Specifications.  
Bridge Camber is indicated by the crown elevations shown.



COMPUTED	J.H. Alexander	EXAMINED	
CHECKED	R.E. Gunn	PASSED	
DESIGNED	J.H.A. J.L. Gardner	APPROVED	
ASSEMBLED			
CHECKED			

FILE NAME =	USER NAME = coombessf	DESIGNED -	REVISED -
ct:\pw\work\p1dot\coombessf\d0135397\7058-sht.details.dgn		DRAWN - SFC	REVISED -
PLOT SCALE = 40.0000' / IN.		CHECKED -	REVISED -
PLOT DATE = 10/20/2010		DATE - 7/14/10	REVISED -

**STATE OF ILLINOIS  
DEPARTMENT OF TRANSPORTATION**

**EXISTING STRUCTURE 074-0017 DETAILS**

SCALE: SHEET NO. OF SHEETS STA. TO STA.

F.A.S. RTE.	SECTION	COUNTY	TOTAL SHEETS	SHEET NO.
1531	10B-1 & 11B-1	PIATT	88	40
CONTRACT NO. 70458				
FED. ROAD DIST. NO. ILLINOIS FED. AID PROJECT				