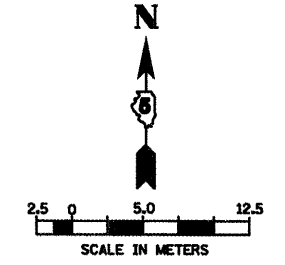
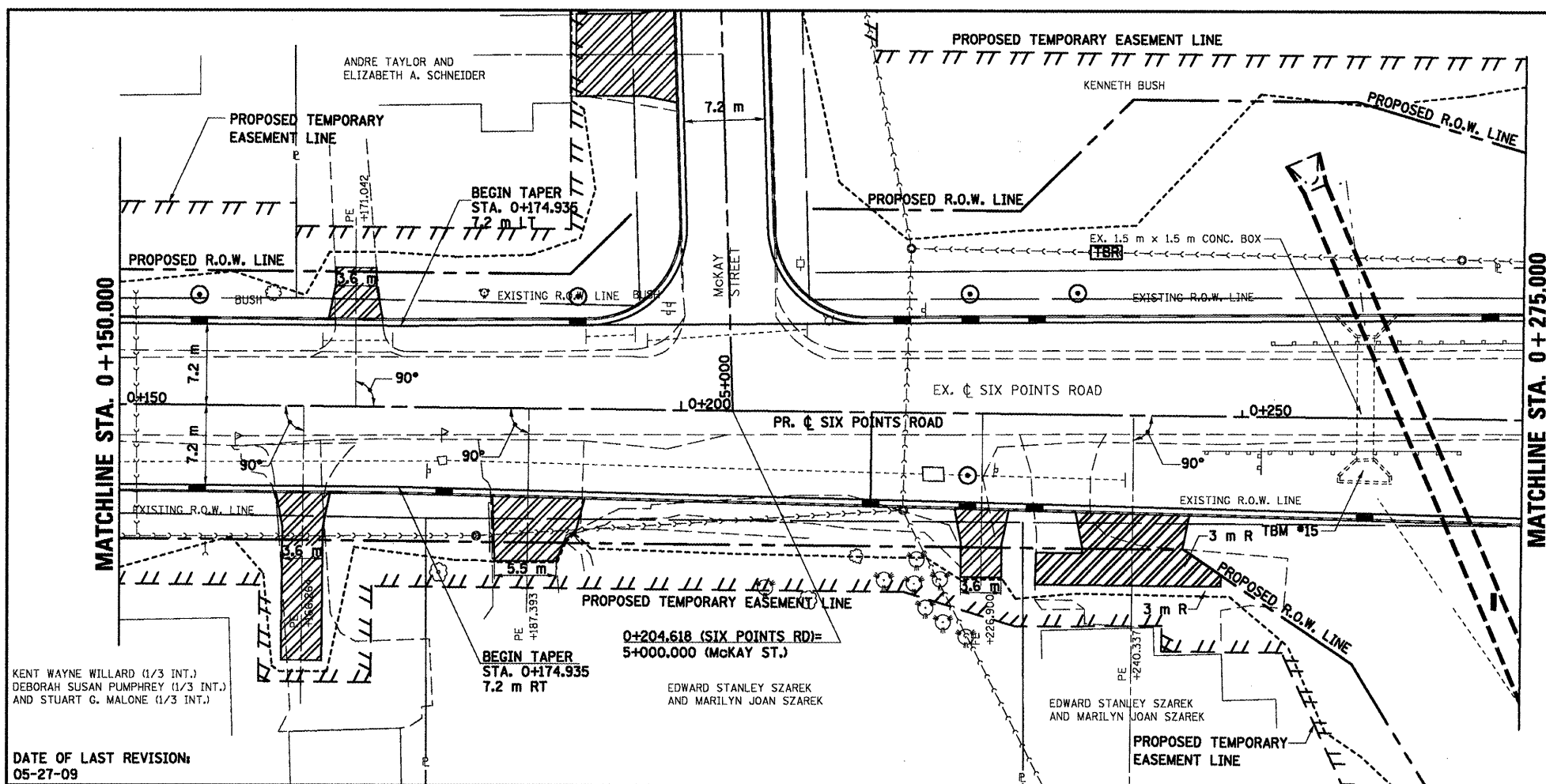


| F.A.P. RTE.         | SECTION     | COUNTY                    | TOTAL SHEETS | SHEET NO. |
|---------------------|-------------|---------------------------|--------------|-----------|
| 704                 | (1)N & ST-1 | McLEAN                    | 497          | 80        |
| STA. 0+150.000      |             | TO STA. 0+275.000         |              |           |
| FED. ROAD DIST. NO. |             | ILLINOIS FED. AID PROJECT |              |           |
| CONTRACT NO. 70514  |             |                           |              |           |



| FINAL SURVEY PLOTTED             | BY | DATE |
|----------------------------------|----|------|
|                                  |    |      |
| NOTE BOOK TEMPLATE AREAS CHECKED |    |      |
| NO.                              |    |      |

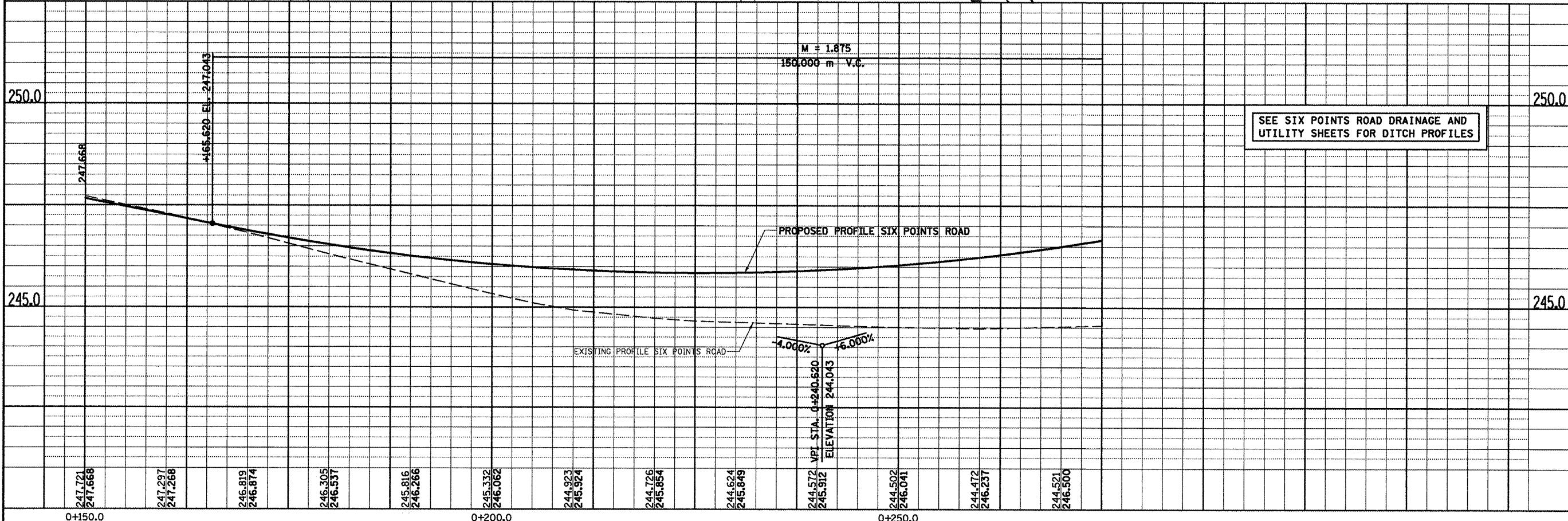


LEGEND:  
**[TBR]** TO BE REMOVED

- NOTES:
- ALL PROPOSED COMBINATION CONCRETE CURB & GUTTER SHOWN IS TYPE B-15.45 UNLESS OTHERWISE NOTED.
  - SEE INTERSECTION DETAILS FOR STATIONS, OFFSETS, & RADII AT INTERSECTIONS.

DATE OF LAST REVISION:  
 05-27-09

| ORIGINAL SURVEY PLOTTED          | BY | DATE |
|----------------------------------|----|------|
|                                  |    |      |
| NOTE BOOK TEMPLATE AREAS CHECKED |    |      |
| NO.                              |    |      |



SIX POINTS ROAD, PLAN & PROFILE, STA. 0+150.000 TO STA. 0+275.000