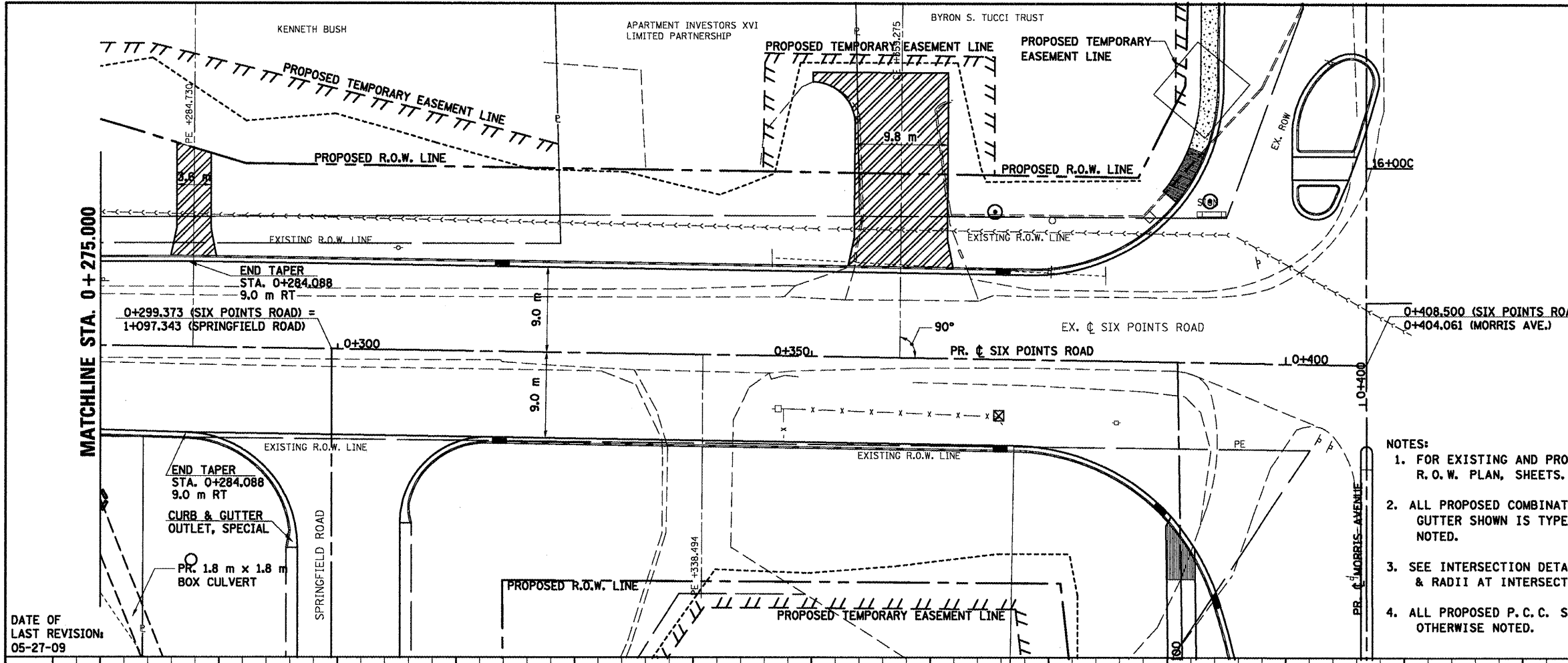
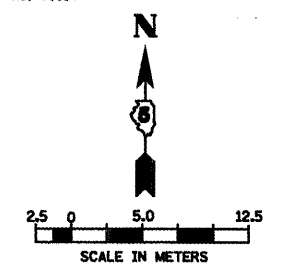
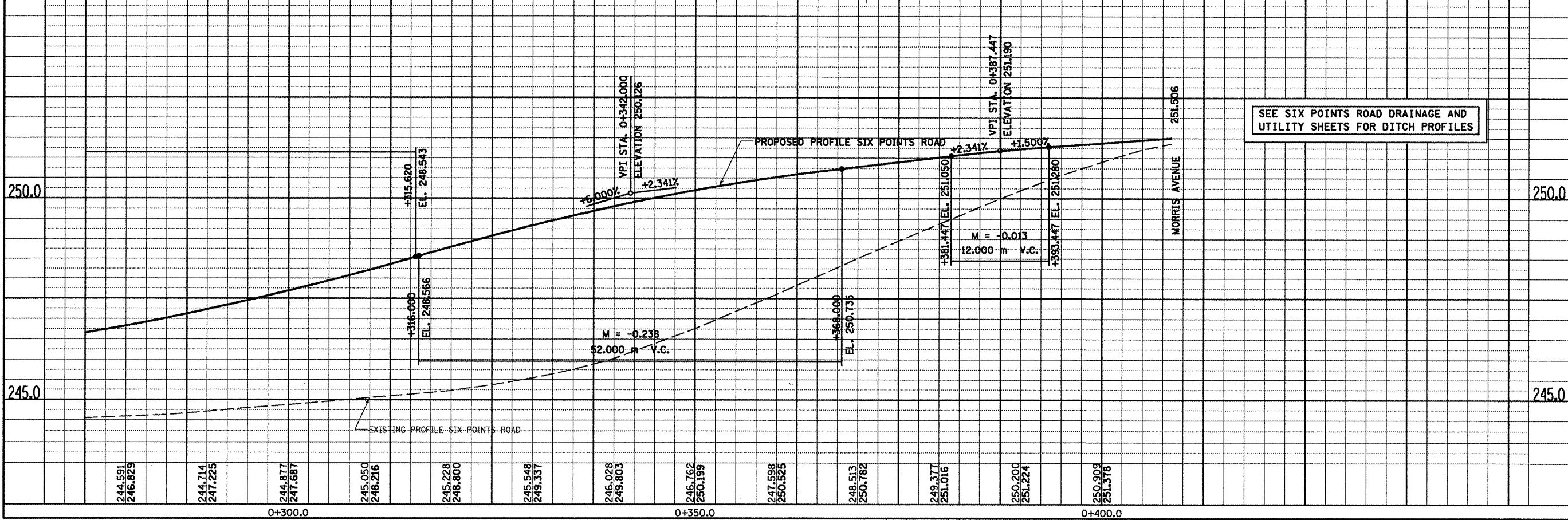


F.A.P. RTE.	SECTION	COUNTY	TOTAL SHEETS	SHEET NO.
704	(LN & TS-1)	McLEAN	497	81
STA. 0+275.000		TO STA. 0+408.500		
FED. ROAD DIST. NO.		ILLINOIS FED. AID PROJECT		
CONTRACT NO. 70514				



- NOTES:
1. FOR EXISTING AND PROPOSED R.O.W. OFFSETS SEE R.O.W. PLAN, SHEETS.
 2. ALL PROPOSED COMBINATION CONCRETE CURB & GUTTER SHOWN IS TYPE B-15.45 UNLESS OTHERWISE NOTED.
 3. SEE INTERSECTION DETAILS FOR STATIONS, OFFSETS, & RADII AT INTERSECTIONS.
 4. ALL PROPOSED P.C.C. SIDEWALK IS 1.8 m UNLESS OTHERWISE NOTED.



SEE SIX POINTS ROAD DRAINAGE AND UTILITY SHEETS FOR DITCH PROFILES

DATE	BY

NO.	AREAS CHECKED	NOTE BOOK TEMPLATE	DATE

DATE	BY

NO.	AREAS CHECKED	NOTE BOOK TEMPLATE	DATE

DATE OF LAST REVISION: 05-27-09

SIX POINTS ROAD, PLAN & PROFILE, STA. 0+275.000 TO STA. 0+408.500