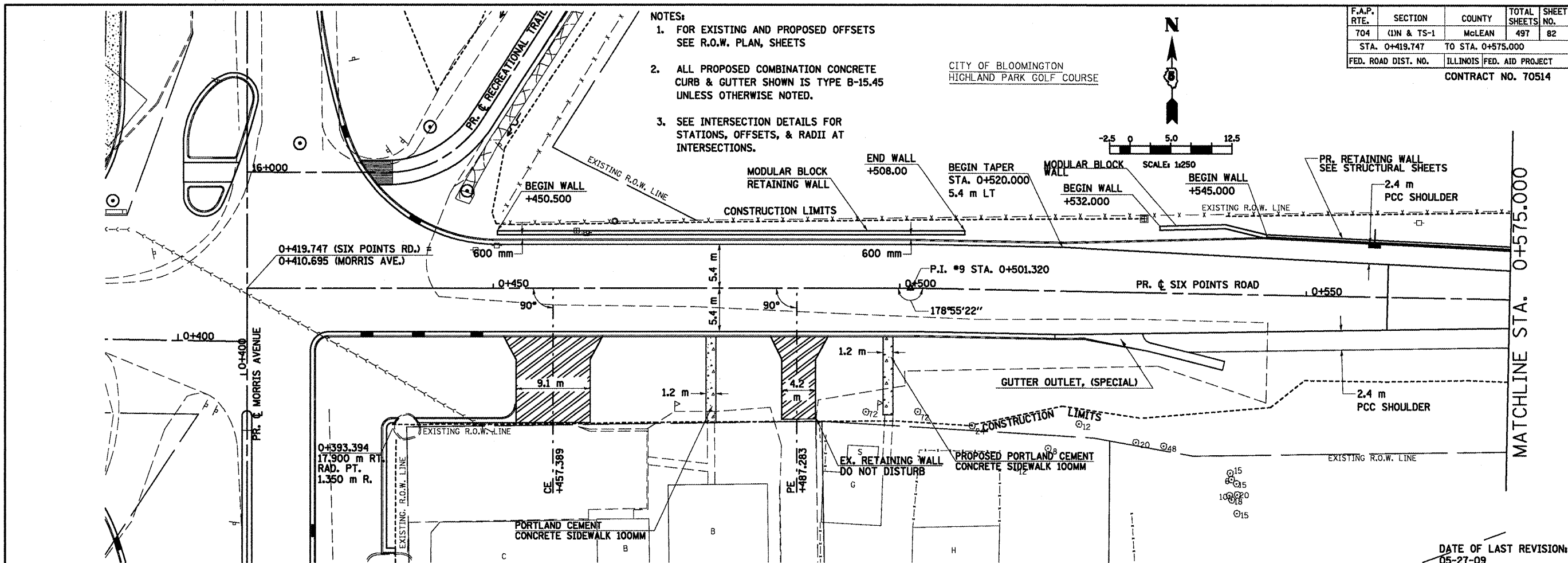
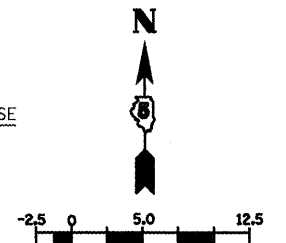


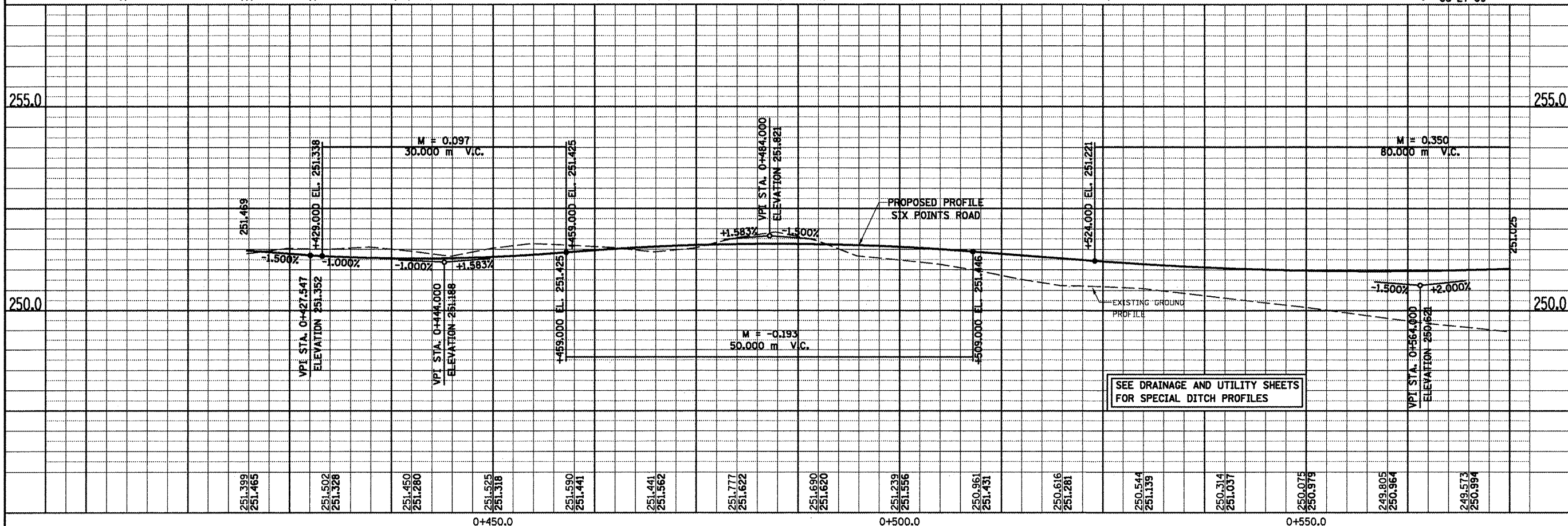
F.A.P. RTE.	SECTION	COUNTY	TOTAL SHEETS	SHEET NO.
704	(1)N & TS-1	McLEAN	497	82
STA. 0+419.747		TO STA. 0+575.000		
FED. ROAD DIST. NO.		ILLINOIS FED. AID PROJECT		
CONTRACT NO. 70514				

- NOTES:
- FOR EXISTING AND PROPOSED OFFSETS SEE R.O.W. PLAN, SHEETS
  - ALL PROPOSED COMBINATION CONCRETE CURB & GUTTER SHOWN IS TYPE B-15.45 UNLESS OTHERWISE NOTED.
  - SEE INTERSECTION DETAILS FOR STATIONS, OFFSETS, & RADII AT INTERSECTIONS.

CITY OF BLOOMINGTON  
HIGHLAND PARK GOLF COURSE



DATE OF LAST REVISION:  
05-27-09



SIX POINTS ROAD, PLAN & PROFILE, STA. 0+419.747 TO STA. 0+575.000

FINAL SURVEY	BY	DATE
NO. _____		
AREAS CHECKED		
AREAS CHECKED		

ORIGINAL SURVEY	BY	DATE
NO. _____		
AREAS CHECKED		
AREAS CHECKED		