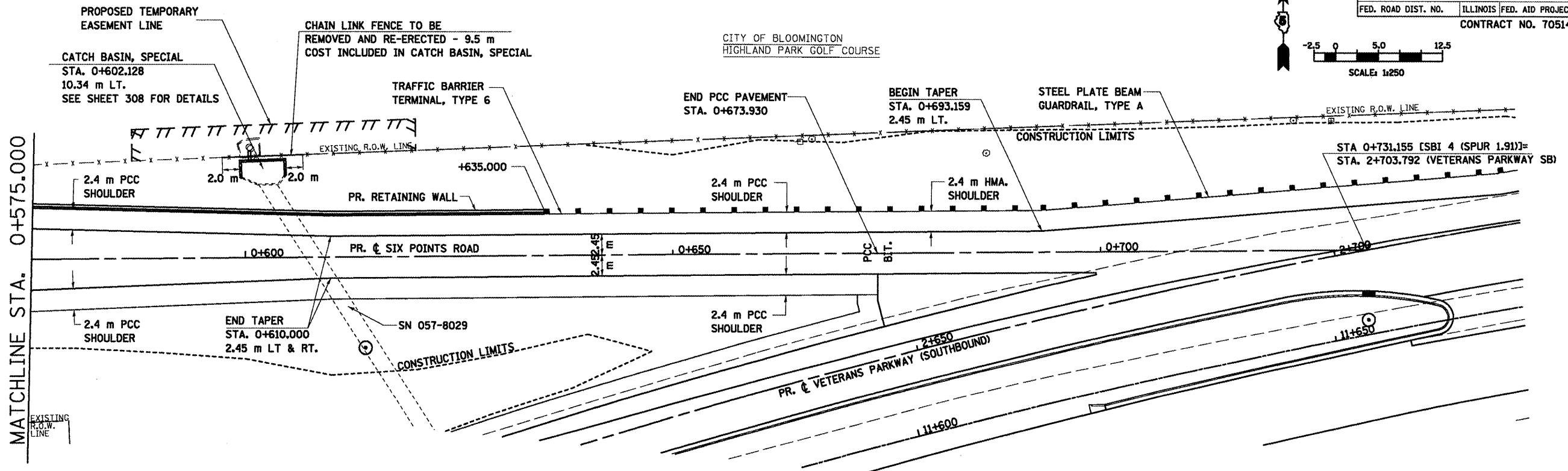
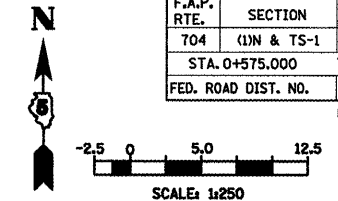
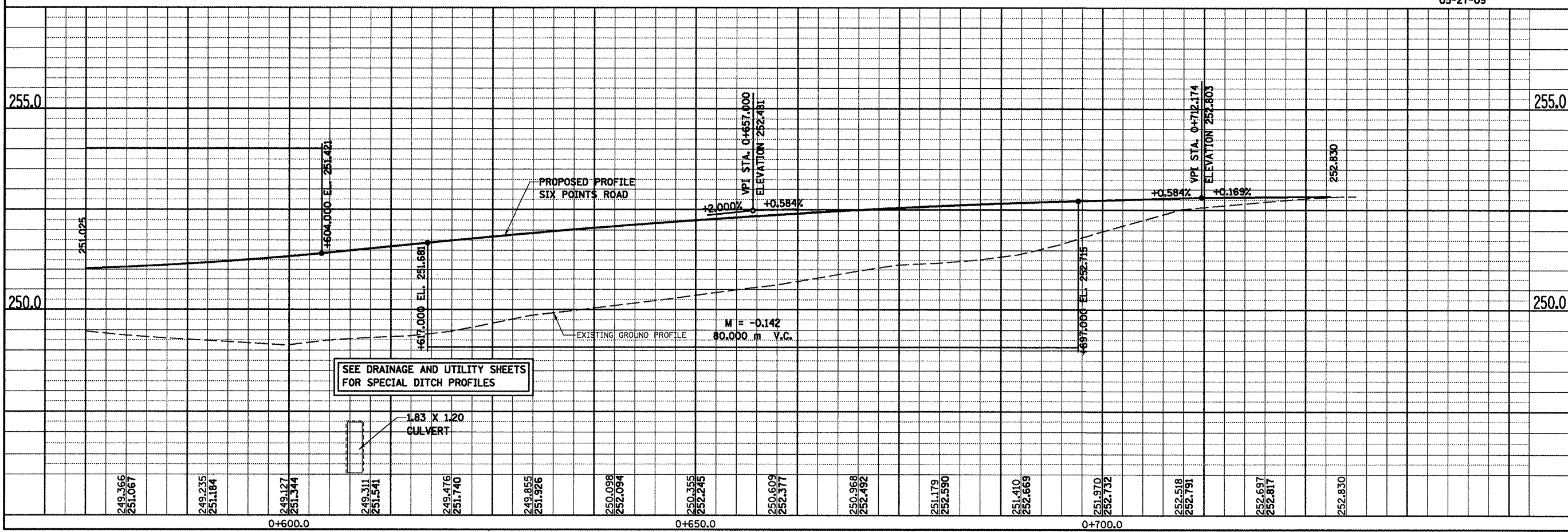


NOTES:
1. FOR EXISTING AND PROPOSED OFFSETS
SEE R.O.W. PLAN, SHEETS.

F.A.P. RTE.	SECTION	COUNTY	TOTAL SHEETS	SHEET NO.
704	(LN & TS-1	MCLEAN	497	83
STA. 0+575.000 TO STA. 0+731.155				
FED. ROAD DIST. NO.		ILLINOIS FED. AID PROJECT		
CONTRACT NO. 70514				



DATE OF LAST REVISION:
05-27-09



SIX POINTS ROAD, PLAN & PROFILE, STA. 0+575.000 TO STA. 0+731.155

NO.	AREAS CHECKED	TEMP. PLATE	NO. OF	DATE

NO.	AREAS CHECKED	TEMP. PLATE	NO. OF	DATE