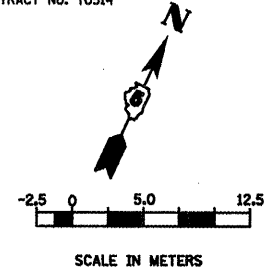


F.A.P. RT.E.	SECTION	COUNTY	TOTAL SHEETS	SHEET NO.
T04	(LN & TS-1)	McLEAN	497	88
STA. 10+000.000		TO STA. 10+150.000		
FED. ROAD DIST. NO.		ILLINOIS FED. AID PROJECT		
CONTRACT NO. 70514				

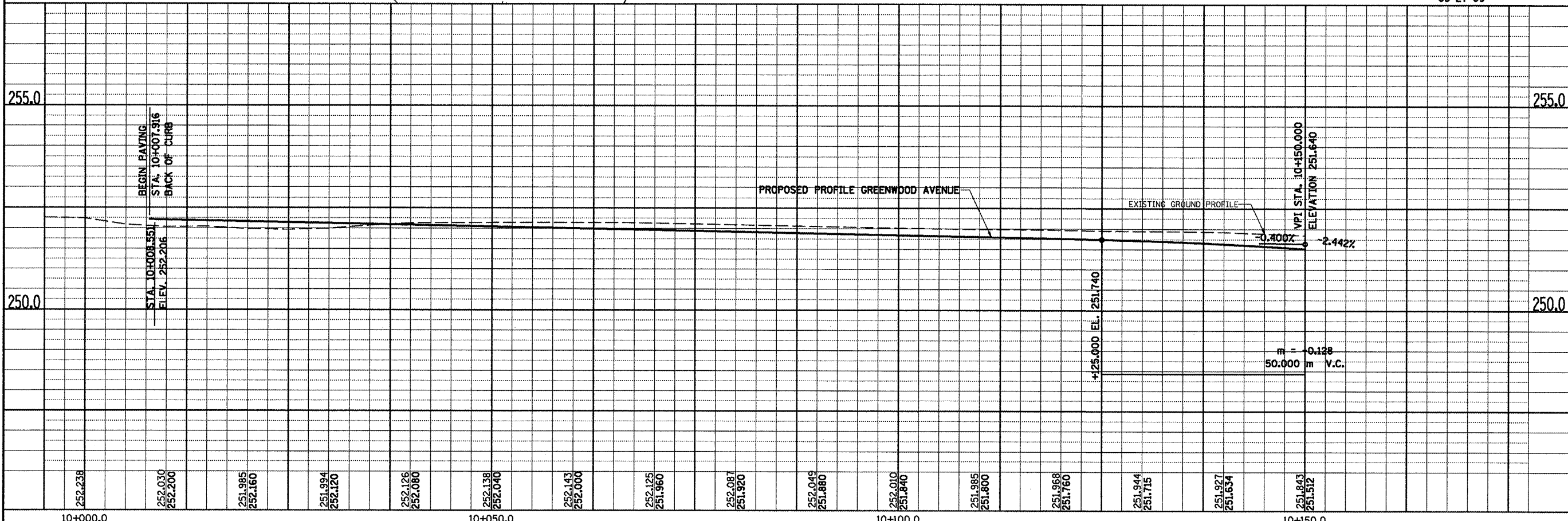
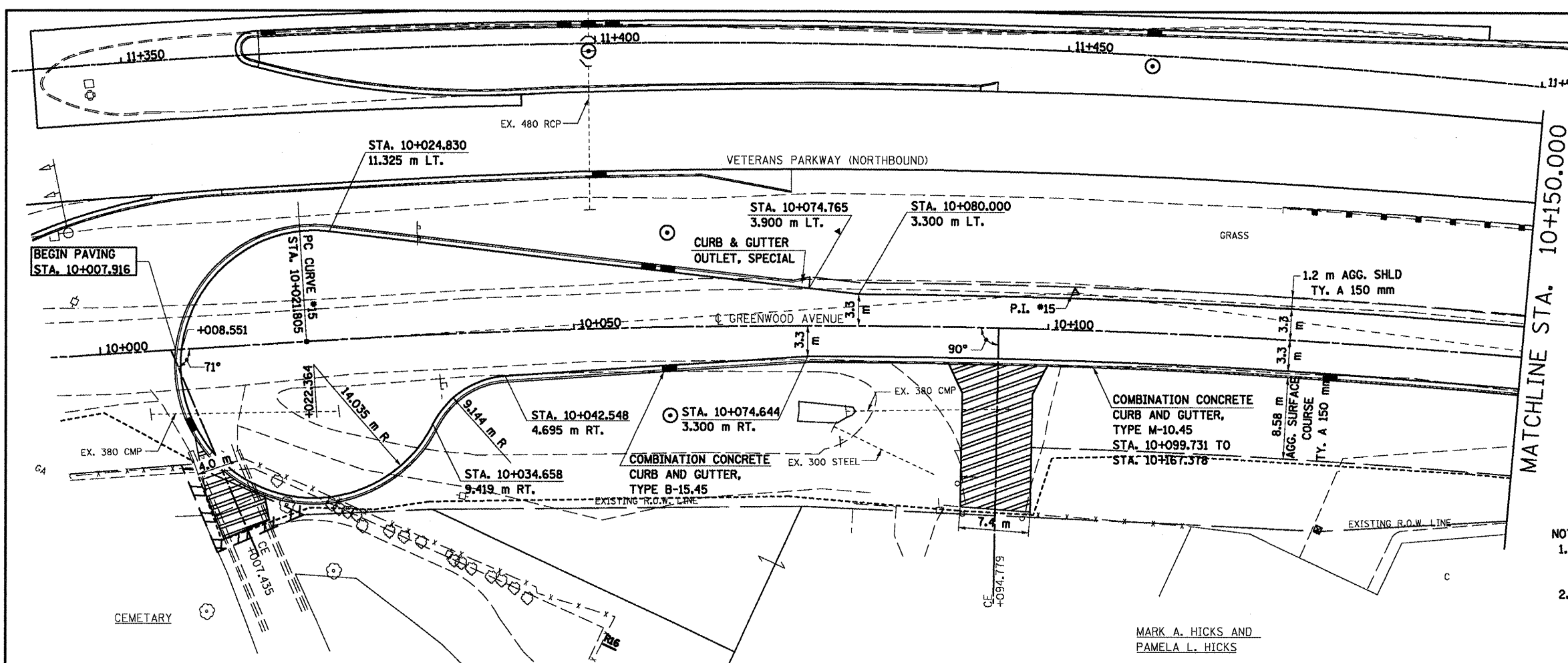


EXIST. CURVE #15
 PI STA = 10+102.992
 $\Delta = 11^\circ 02' 28''$ (RT.)
 R = 840.000 m
 T = 81.186 m
 L = 161.870 m
 E = 3.914 m
 $e =$ N.C.
 T.R. = N.A.
 S.E. RUN. = N.A.
 P.C. STA = 10+021.805
 P.T. STA = 10+183.675

- NOTES:
- FOR EXISTING AND PROPOSED OFFSETS SEE R.O.W. PLAN SHEETS.
 - ALL PROPOSED COMBINATION CONCRETE CURB & GUTTER SHOWN IS TYPE B-15.45 UNLESS OTHERWISE NOTED.

DATE OF LAST REVISION:
05-27-09

MARK A. HICKS AND
PAMELA L. HICKS



GREENWOOD AVENUE, PLAN AND PROFILE, STA. 10+000.000 TO STA. 10+150.000

FINAL SURVEY PLOTTED	BY	DATE
NOTE BOOK TEMPLATE		
AREAS CHECKED		
NO.		

ORIGINAL SURVEY PLOTTED	BY	DATE
NOTE BOOK TEMPLATE		
AREAS CHECKED		
NO.		