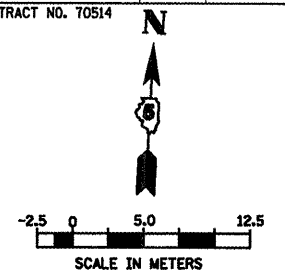


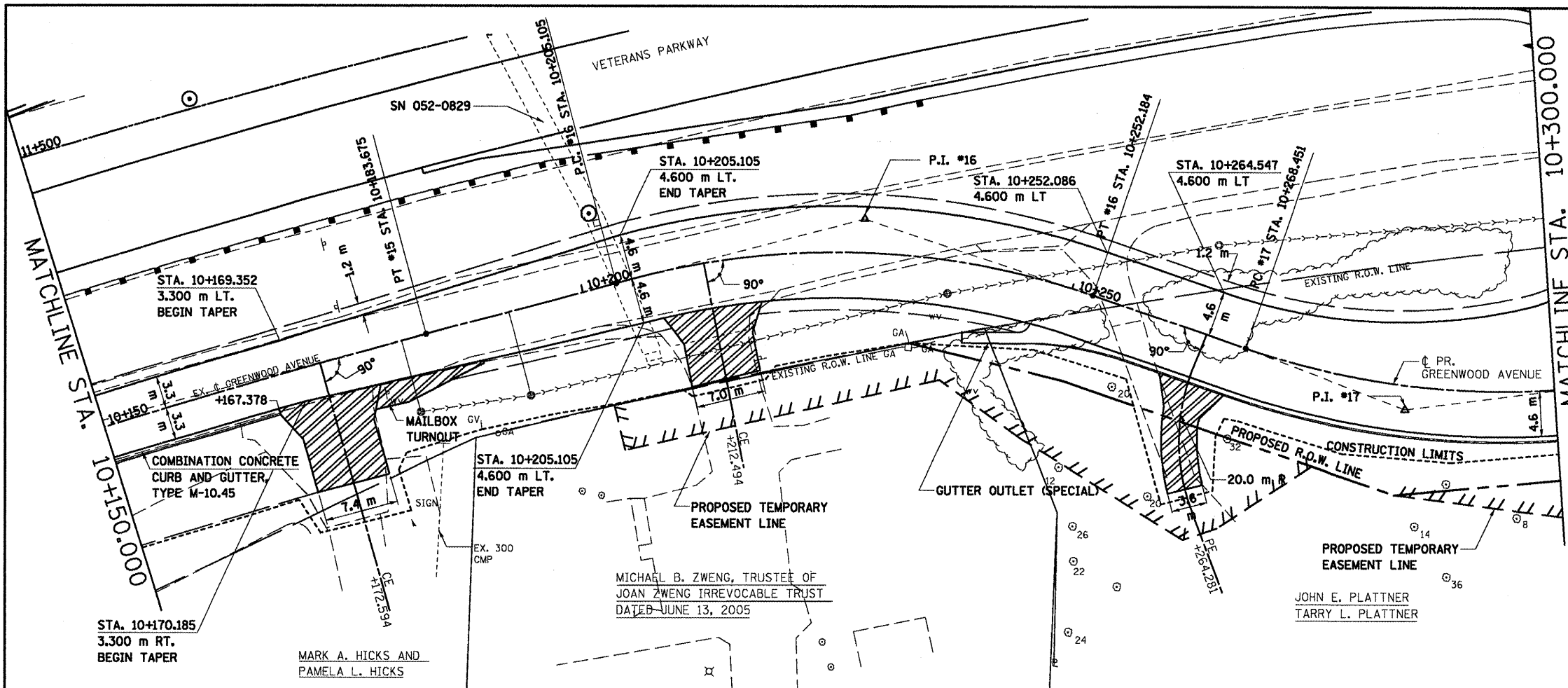
F.A.P. RT.E.	SECTION	COUNTY	TOTAL SHEETS	SHEET NO.
704	(LN & TS-1)	McLEAN	497	89
STA. 10+150.000		TO STA. 10+300.000		
FED. ROAD DIST. NO.		ILLINOIS FED. AID PROJECT		
CONTRACT NO. 70514				



PR. CURVE #16 PI STA = 10+229.362 $\Delta = 34^\circ 02' 16''$ (RT.) R = 79.248 m T = 24.257 m L = 47.079 m E = 3.629 m e = N.C. T.R. = N.A. S.E. RUN. = N.A. P.C. STA = 10+205.105 P.T. STA = 10+252.184	PR. CURVE #17 PI STA = 10+285.443 $\Delta = 24^\circ 12' 14''$ (LT.) R = 79.248 m T = 16.992 m L = 33.477 m E = 1.801 m e = N.C. T.R. = N.A. S.E. RUN. = N.A. P.C. STA = 10+268.451 P.T. STA = 10+301.928
--	--

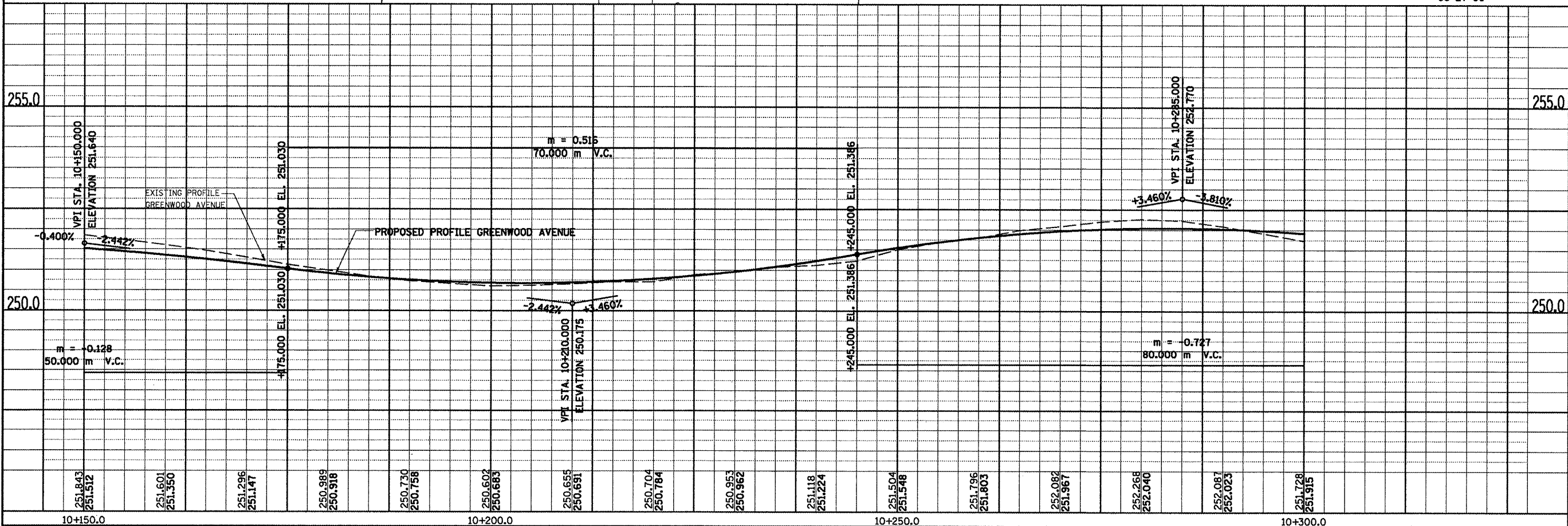
- NOTES:
- FOR EXISTING AND PROPOSED OFFSETS SEE R.O.W. PLAN SHEETS.
 - ALL PROPOSED COMBINATION CONCRETE CURB & GUTTER SHOWN IS TYPE B-15.45 UNLESS OTHERWISE NOTED.

DATE OF LAST REVISION:
05-27-09



FINAL SURVEY	DATE
SURVEY PLOTTED	
NOTE BOOK TEMPLATE	
AREAS CHECKED	
NO.	

ORIGINAL SURVEY	DATE
SURVEY PLOTTED	
NOTE BOOK TEMPLATE	
AREAS CHECKED	
NO.	



GREENWOOD AVENUE, PLAN AND PROFILE, STA. 10 + 150.000 TO STA. 10 + 300.000