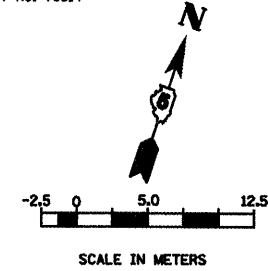


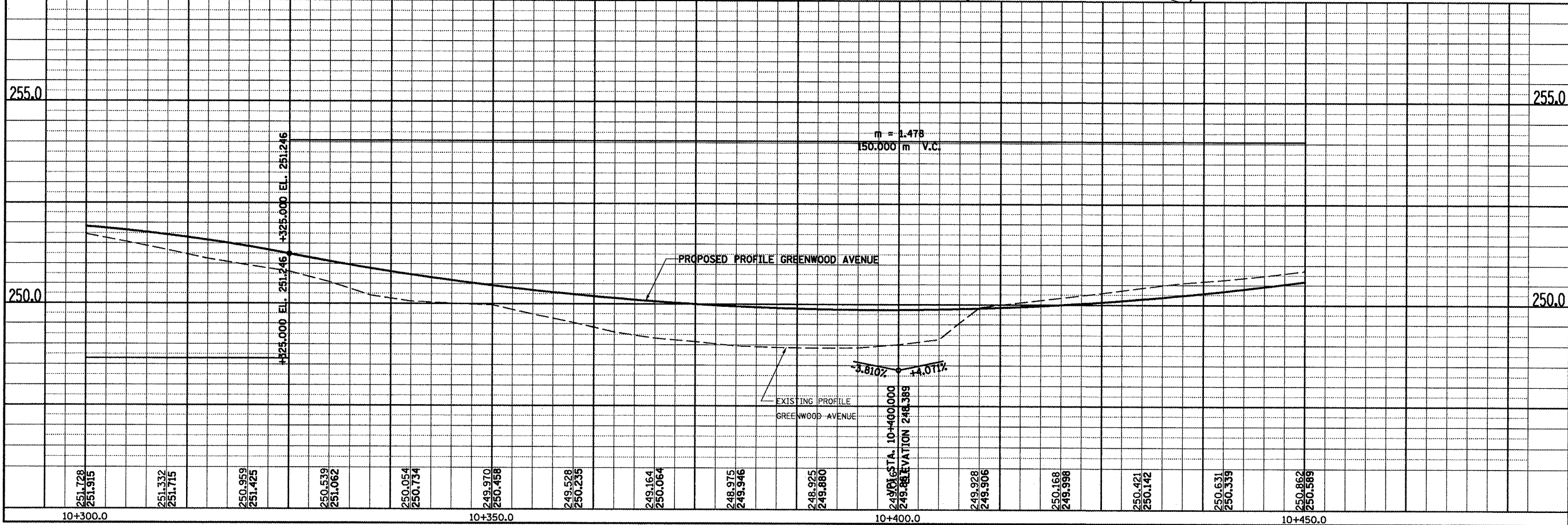
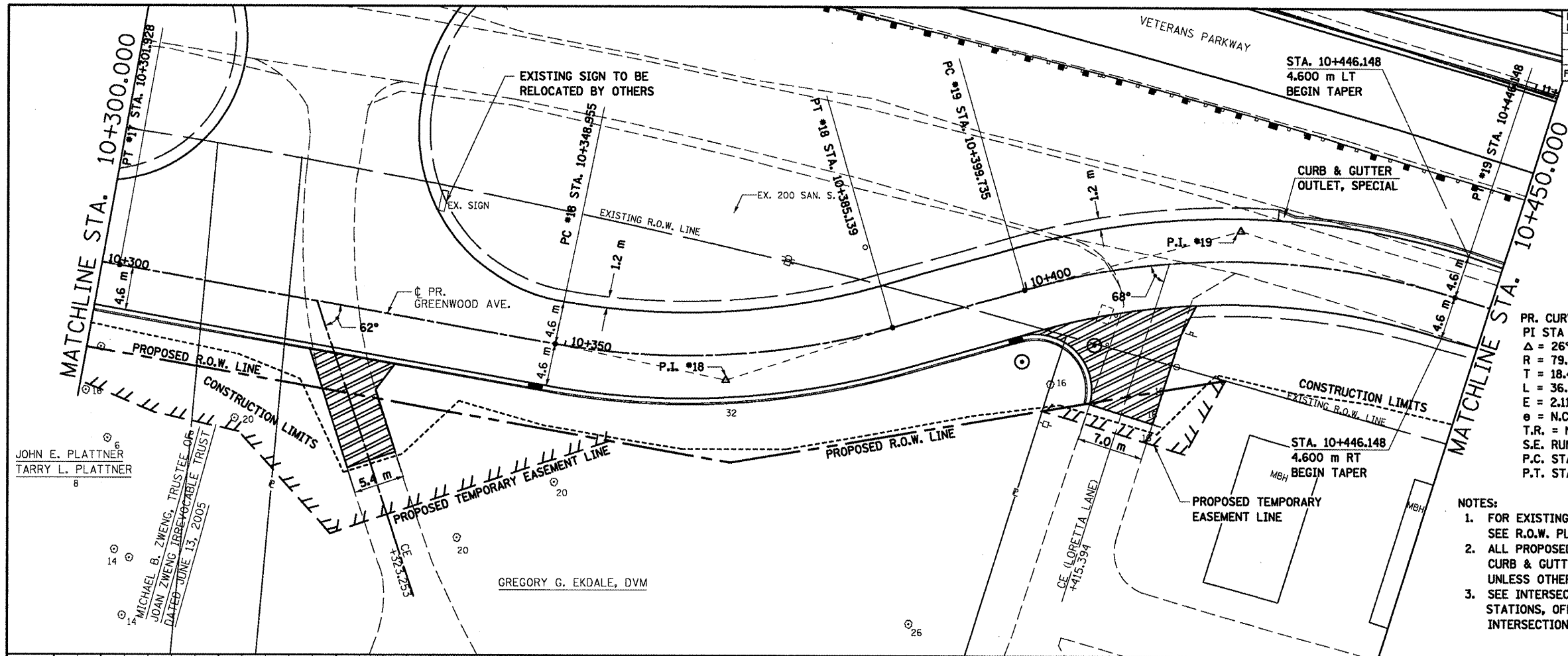
F.A.P. RT.E.	SECTION	COUNTY	TOTAL SHEETS NO.	SHEET NO.
704	(LN & TS-1	MCLEAN	497	90
STA. 10+300.000		TO STA. 10+450.000		
FED. ROAD DIST. NO.		ILLINOIS FED. AID PROJECT		
CONTRACT NO. 70514				



PR. CURVE #18 PI STA = 10+367.368 $\Delta = 26^\circ 09' 41''$ (LT.) R = 79.248 m T = 18.413 m L = 36.185 m E = 2.111 m $e = N.C.$ T.R. = N.A. S.E. RUN. = N.A. P.C. STA = 10+348.955 P.T. STA = 10+385.139	PR. CURVE #19 PI STA = 10+423.629 $\Delta = 33^\circ 33' 22''$ (RT.) R = 79.248 m T = 23.893 m L = 46.413 m E = 3.524 m $e = N.C.$ T.R. = N.A. S.E. RUN. = N.A. P.C. STA = 10+399.735 P.T. STA = 10+446.148
--	--

- NOTES:
- FOR EXISTING AND PROPOSED OFFSETS SEE R.O.W. PLAN SHEETS.
 - ALL PROPOSED COMBINATION CURB & GUTTER SHOWN IS TYPE B-15.45 UNLESS OTHERWISE NOTED.
 - SEE INTERSECTION DETAILS FOR STATIONS, OFFSETS, & RADII AT INTERSECTIONS.

DATE OF LAST REVISION:
05-27-09



GREENWOOD AVENUE, PLAN & PROFILE, STA. 10 + 300.000 TO STA. 10 + 450.000

BY	DATE

FINAL SURVEY PLOTTED
NOTE BOOK NO. _____
AREAS CHECKED _____

BY	DATE

ORIGINAL SURVEY PLOTTED
NOTE BOOK NO. _____
AREAS CHECKED _____

JOHN E. PLATTNER
TARRY L. PLATTNER

MICHAEL B. ZWENG, TRUSTEE OF
JOAN ZWENG IRREVOCABLE TRUST
DATED JUNE 13, 2005

GREGORY G. EKDALE, DVM