

GENERAL STAGING NOTES

MAINTAIN ACCESS TO ALL ADJACENT PROPERTIES THROUGHOUT THE DURATION OF THE PROJECT.

PLACE TYPE III BARRICADES IN ACCORDANCE WITH STANDARD 701901.

WORK TO BE COMPLETED IN STAGE I
CLOSE GREENWOOD AVENUE AT MORRIS AVENUE AND STA. 6+990.000

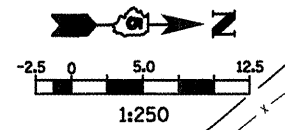
CONSTRUCT GREENWOOD AVENUE FROM STA. 6+989.437 TO STA. 7+140.000

SEE TRAFFIC CONTROL & PROTECTION DEVICES (ROAD & SIDEROAD/STREET CLOSURES) FOR ADDITIONAL DETAILS.

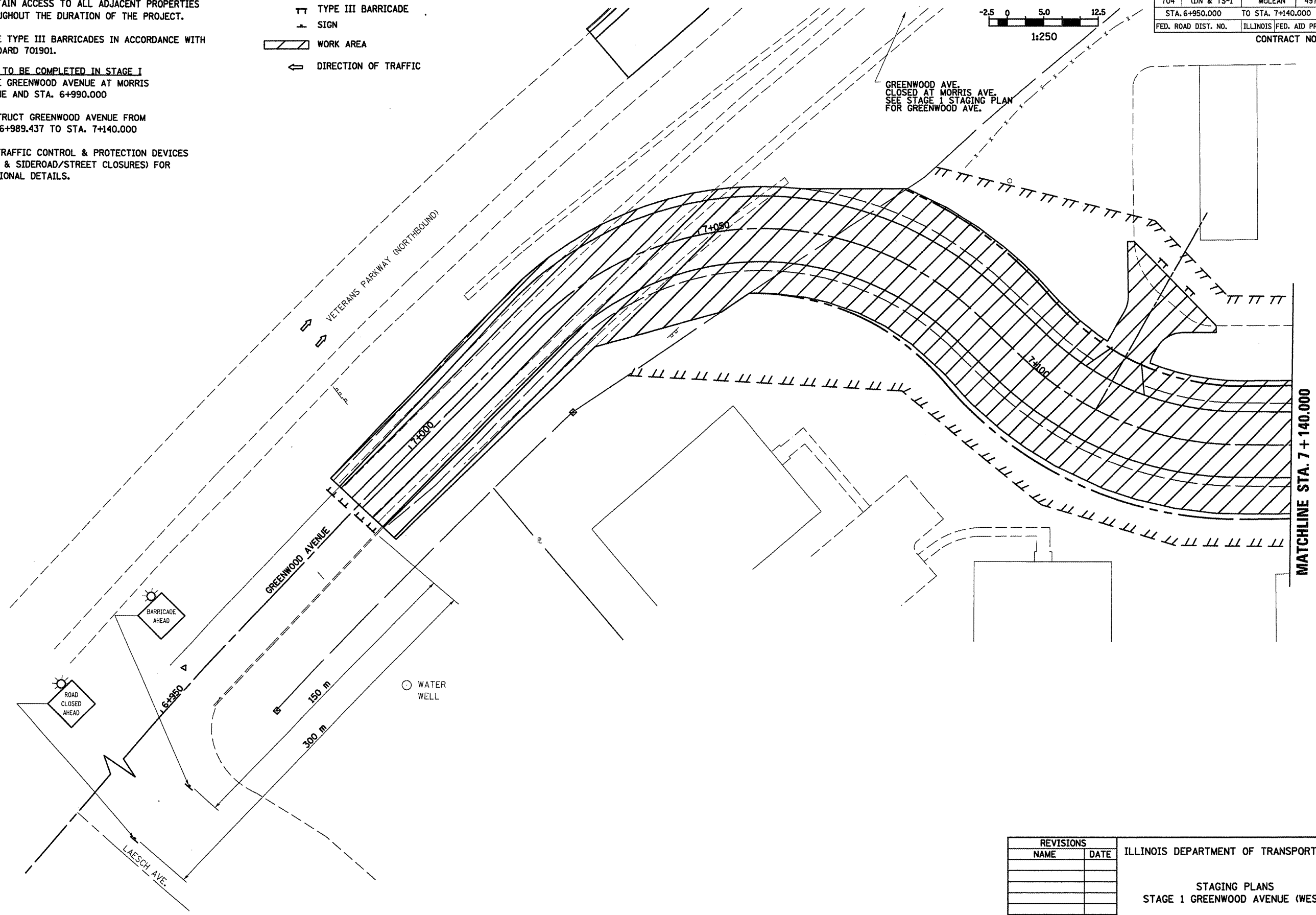
LEGEND

- TT TYPE III BARRICADE
- SIGN
- ▨ WORK AREA
- ⇨ DIRECTION OF TRAFFIC

STAGE I



F.A.P. RTE.	SECTION	COUNTY	TOTAL SHEETS	SHEET NO.
704	(DN & TS-1)	McLEAN	497	109
STA. 6+950.000		TO STA. 7+140.000		
FED. ROAD DIST. NO.		ILLINOIS FED. AID PROJECT		CONTRACT NO. 70514



GREENWOOD AVE. CLOSED AT MORRIS AVE. SEE STAGE I STAGING PLAN FOR GREENWOOD AVE.

MATCHLINE STA. 7 + 140.000

PLOT DATE = 8/16/2008
 FILE NAME = \\s:\work\yandea\staging\stage1\stage1.dgn
 PLOT SCALE = 13.50000 m / in.
 USER NAME = oragie

REVISIONS	
NAME	DATE

ILLINOIS DEPARTMENT OF TRANSPORTATION

STAGING PLANS
STAGE 1 GREENWOOD AVENUE (WEST)

DRAWN BY SAM
CHECKED BY PMH

DATE 05-27-09

STAGING PLANS, STAGE 1 GREENWOOD AVENUE (WEST)