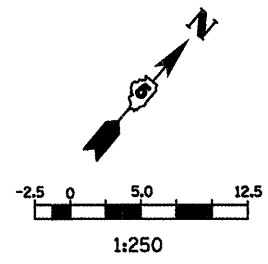


F.A.P. RTE.	SECTION	COUNTY	TOTAL SHEETS	SHEET NO.
704	(1)N & TS-1	McLEAN	497	113
STA. 2+150.000		TO STA. 2+450.000		
FED. ROAD DIST. NO.		ILLINOIS FED. AID PROJECT		
CONTRACT NO. 70514				



- LEGEND**
- ↑ SIGN
 - DRUM, BARRICADE OR VERTICAL BARRICADE WITH STEADY BURNING LIGHT
 - ▨ WORK AREA
 - ▩ TEMPORARY PAVEMENT
 - ⇨ DIRECTION OF TRAFFIC

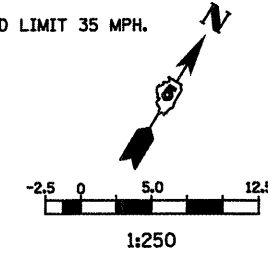
GENERAL STAGING NOTES
 MAINTAIN ACCESS TO ALL ADJACENT PROPERTIES THROUGHOUT THE DURATION OF THE PROJECT.

PLACE TYPE III BARRICADES IN ACCORDANCE WITH STANDARD 702001.

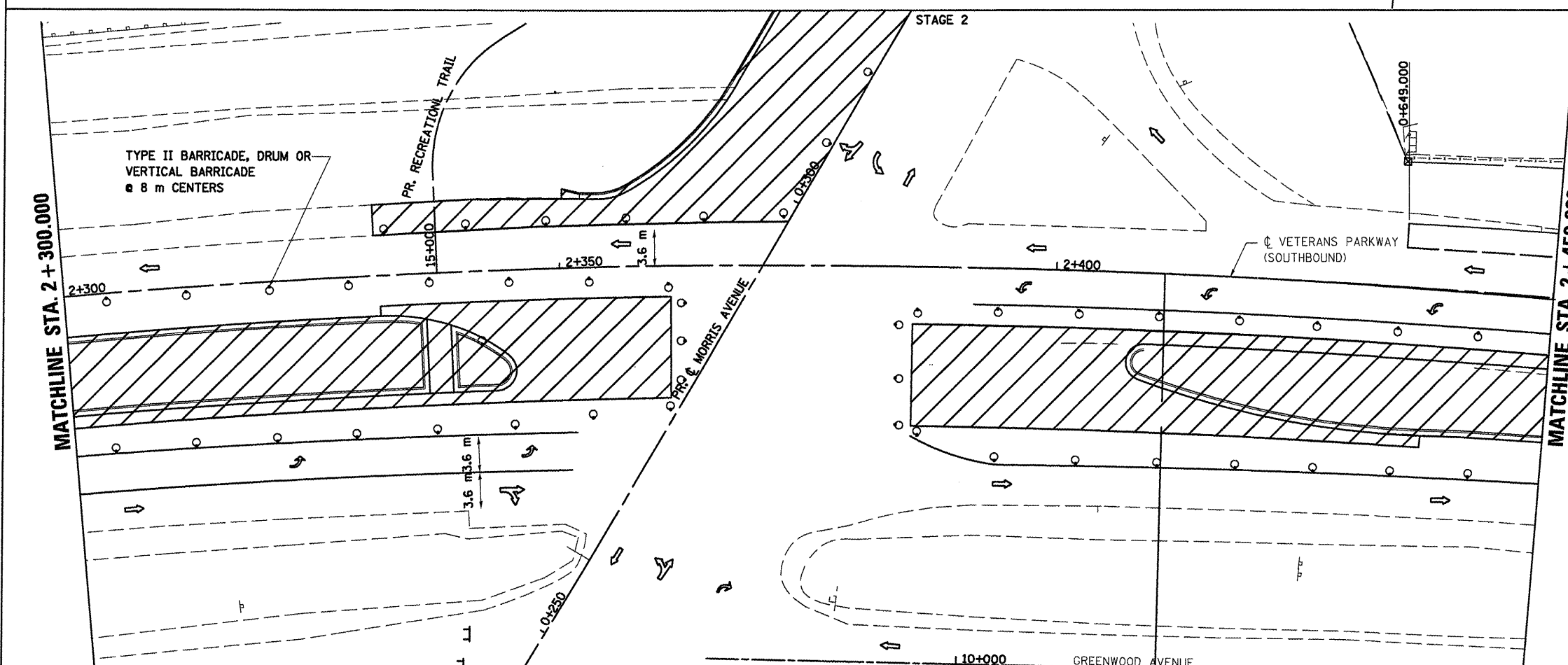
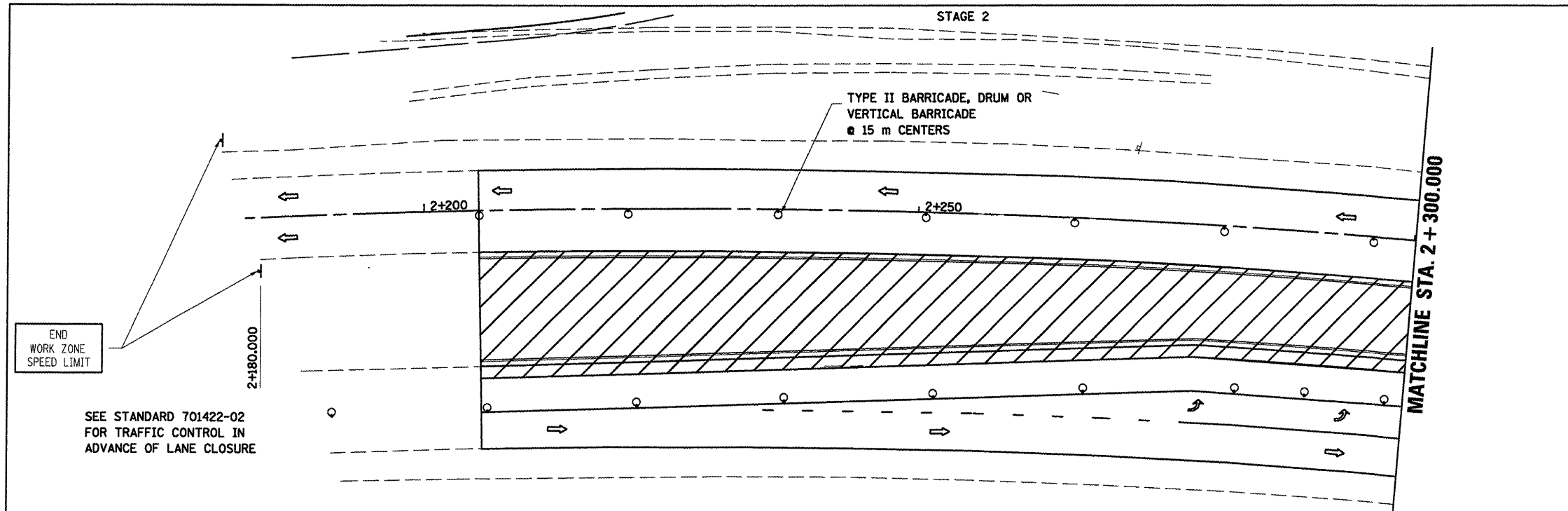
WORK TO BE COMPLETED IN STAGE 2
 INSTALL TEMPORARY TRAFFIC SIGNALS AT VETERANS PARKWAY AND MORRIS AVE.

CONSTRUCT PAVEMENT WIDENING AND SHOULDER WORK IN MEDIAN AREA OF VETERANS PARKWAY AFTER CONSTRUCTION OF STAGE 2 OF MORRIS AVE. NORTH OF VETERANS PARKWAY.

WORK ZONE SPEED LIMIT 35 MPH.



- LEGEND**
- TT TYPE III BARRICADE WITH FLASHING LIGHTS
 - ↑ SIGN
 - DRUM, BARRICADE OR VERTICAL BARRICADE WITH STEADY BURNING LIGHT
 - ▨ WORK AREA
 - ▩ TEMPORARY PAVEMENT
 - ⇨ DIRECTION OF TRAFFIC



REVISIONS	
NAME	DATE

ILLINOIS DEPARTMENT OF TRANSPORTATION

**STAGING PLANS
 STAGE 2 VETERANS PARKWAY**

DRAWN BY SAM
 CHECKED BY PMH

DATE 05-27-09

PLOT DATE = 8/12/2009
 PLOT SCALE = 1:2500
 USER NAME = oregan

STAGING PLANS, STAGE 2 VETERANS PARKWAY