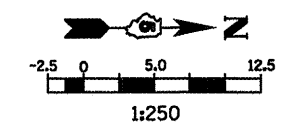
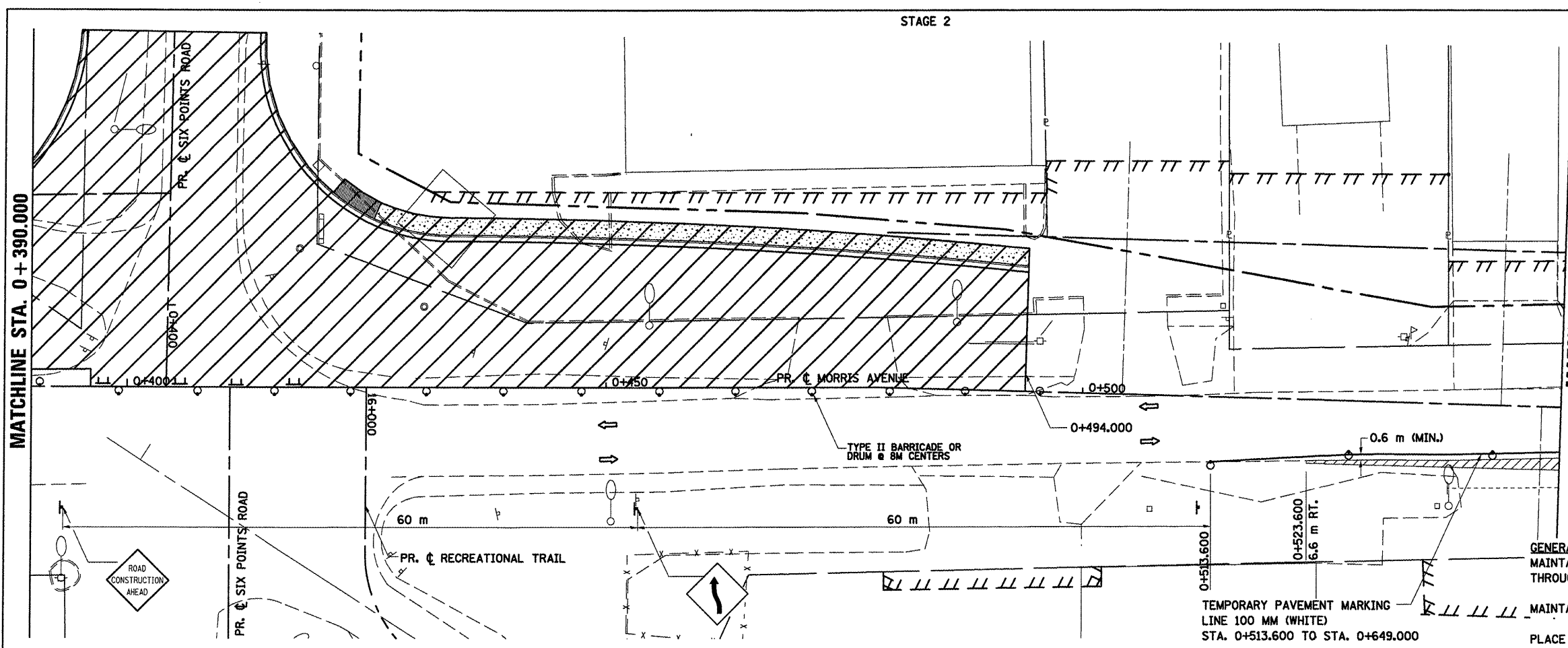


F.A.P. RTE.	SECTION	COUNTY	TOTAL SHEETS	SHEET NO.
704	(DN & TS-1)	McLEAN	497	117
STA. 0+390.000		TO STA. 0+700.000		
FED. ROAD DIST. NO.		ILLINOIS FED. AID PROJECT		
CONTRACT NO. 70514				



- LEGEND**
- TT TYPE III BARRICADE
 - ⊥ SIGN
 - DRUM, BARRICADE OR VERTICAL BARRICADE WITH STEADY BURNING LIGHT
 - ▨ WORK AREA
 - ▨ TEMPORARY PAVEMENT
 - ↔ DIRECTION OF TRAFFIC

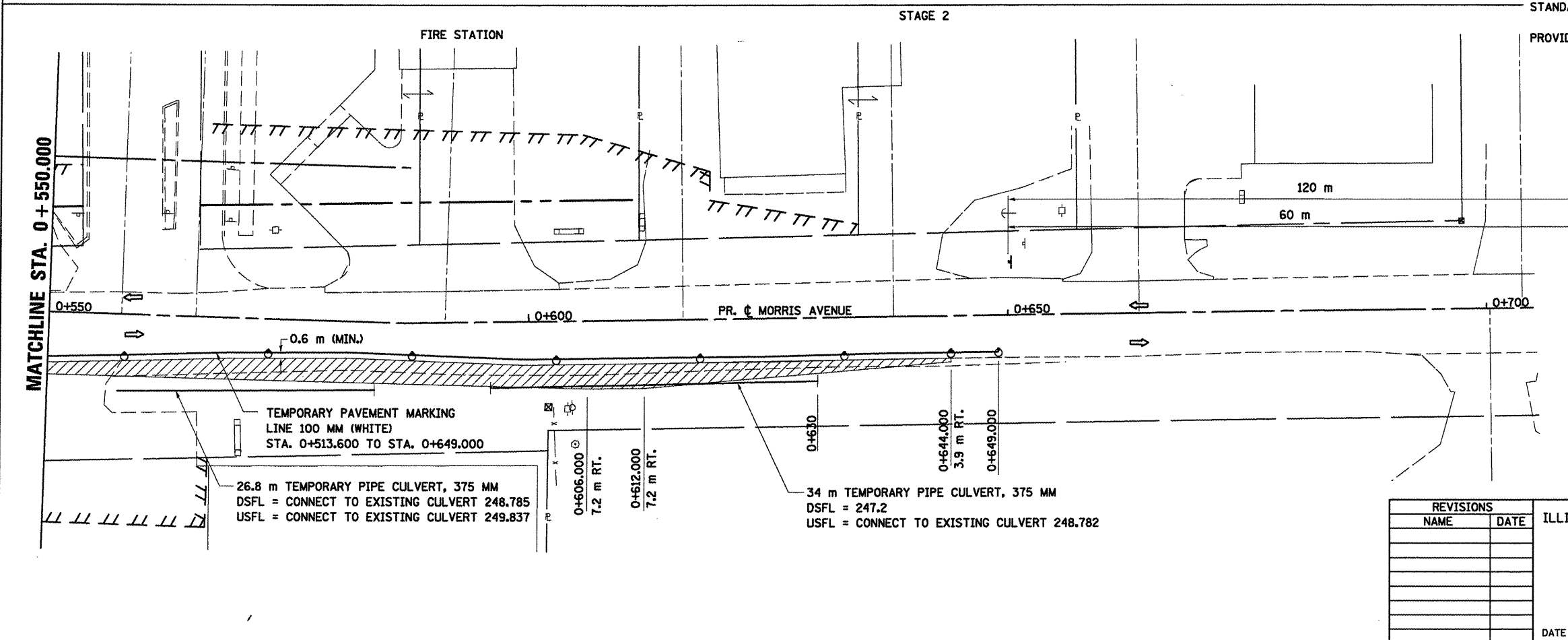


GENERAL STAGING NOTES

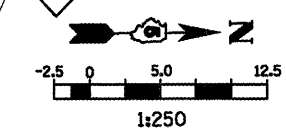
MAINTAIN ACCESS TO ALL ADJACENT PROPERTIES THROUGHOUT THE DURATION OF THE PROJECT.

MAINTAIN ACCESS TO FIRE STATION AT ALL TIMES.

PLACE TYPE III BARRICADES IN ACCORDANCE WITH STANDARD 701901.



PROVIDE TEMPORARY MAILBOX SERVICE



- LEGEND**
- TT TYPE III BARRICADE
 - ⊥ SIGN
 - DRUM, BARRICADE OR VERTICAL BARRICADE WITH STEADY BURNING LIGHT
 - ▨ WORK AREA
 - ▨ TEMPORARY PAVEMENT
 - ↔ DIRECTION OF TRAFFIC

REVISIONS	
NAME	DATE

ILLINOIS DEPARTMENT OF TRANSPORTATION

STAGING PLANS
STAGE 2 MORRIS AVENUE (NORTH)

DRAWN BY SAM
CHECKED BY PMH
DATE 05-27-09

STAGING PLANS, STAGE 2 MORRIS AVENUE (NORTH)

PLOT DATE = 6/10/2009
 FILE NAME = ...
 PLOT SCALE = 1:250
 USER NAME = ...