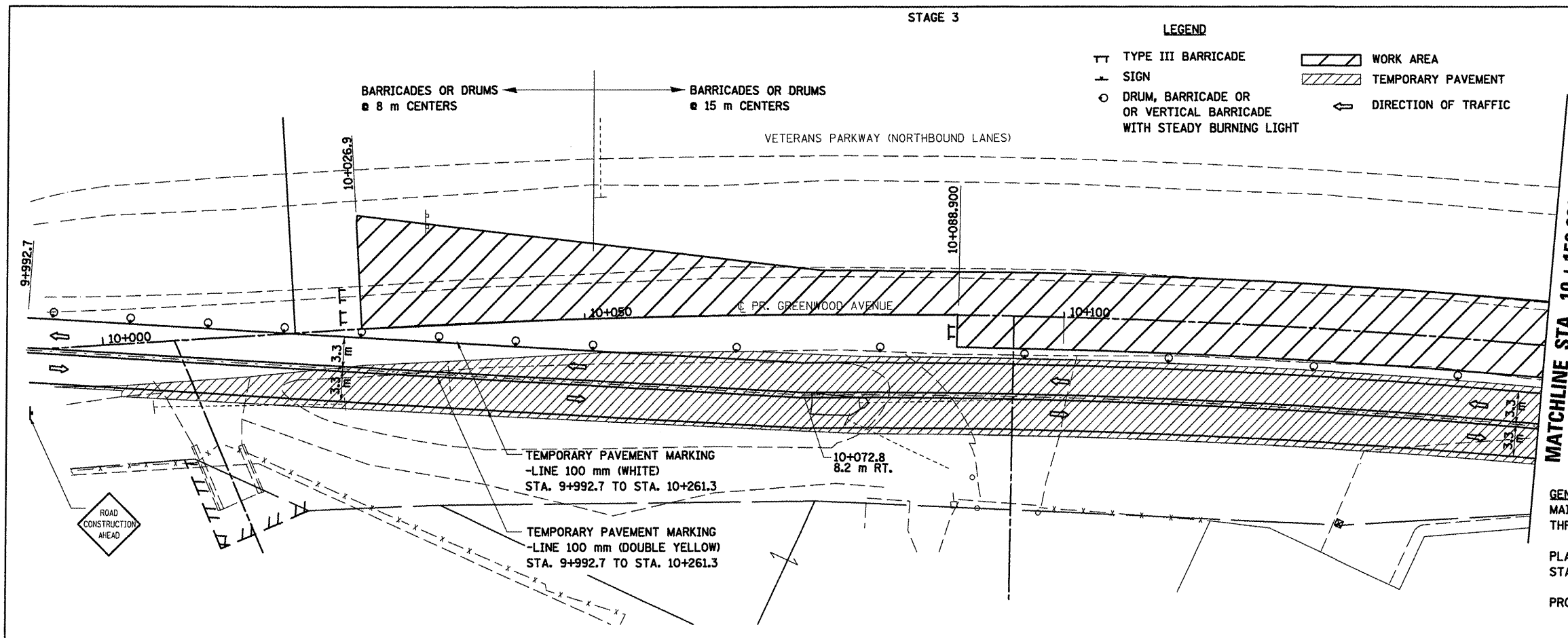
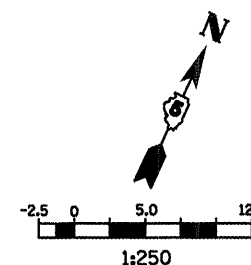


STAGE 3

LEGEND

- TT TYPE III BARRICADE
- ⊥ SIGN
- DRUM, BARRICADE OR VERTICAL BARRICADE WITH STEADY BURNING LIGHT
- ▨ WORK AREA
- ▩ TEMPORARY PAVEMENT
- ⇐ DIRECTION OF TRAFFIC

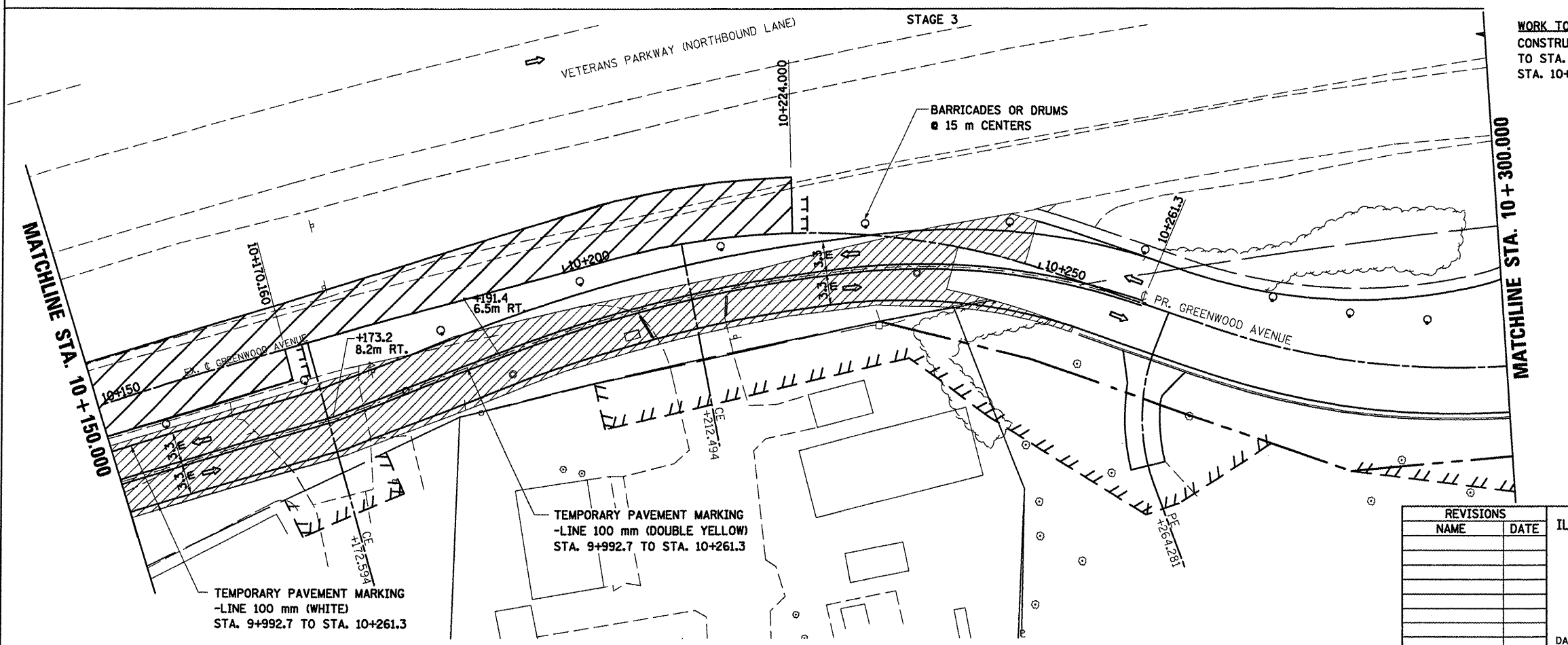
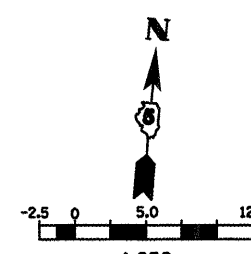
F.A.P. RTE.	SECTION	COUNTY	TOTAL SHEETS	SHEET NO.
704	(1)N & TS-1	McLEAN	497	128
STA. 10+000.000		TO STA. 10+300.000		
FED. ROAD DIST. NO.		ILLINOIS FED. AID PROJECT		
CONTRACT NO. 70514				



GENERAL STAGING NOTES
 MAINTAIN ACCESS TO ALL ADJACENT PROPERTIES THROUGHOUT THE DURATION OF THE PROJECT.
 PLACE TYPE III BARRICADES IN ACCORDANCE WITH STANDARD 701901.
 PROVIDE TEMPORARY MAILBOX SERVICE

STAGE 3

WORK TO BE COMPLETED IN STAGE 3
 CONSTRUCT FINAL PAVEMENT FROM STA. 10+026.9, LT. TO STA. 10+224.0, LT. AND STA. 10+091.18, RT. TO STA. 10+170.16, RT.



- TT TYPE III BARRICADE
- ⊥ SIGN
- DRUM, BARRICADE OR VERTICAL BARRICADE WITH STEADY BURNING LIGHT
- ▨ WORK AREA
- ▩ TEMPORARY PAVEMENT
- ⇐ DIRECTION OF TRAFFIC

REVISIONS	
NAME	DATE

ILLINOIS DEPARTMENT OF TRANSPORTATION
 STAGING PLANS
 STAGE 3 GREENWOOD AVENUE (EAST)
 DRAWN BY SAM
 CHECKED BY PMH
 DATE 05-27-09

STAGING PLANS, STAGE 3 GREENWOOD AVENUE (EAST)

PLOT DATE = 8/12/2008
 FILE NAME = c:\p\work\project\stage3\stage3.dgn
 PLOT SCALE = 1:250
 USER NAME = arag