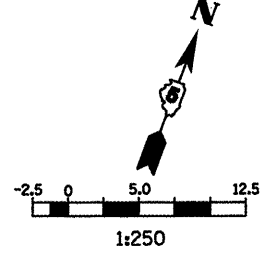


F.A.P. RTE.	SECTION	COUNTY	TOTAL SHEETS	SHEET NO.
704	(1)N & TS-1	McLEAN	497	134
STA. 2+450.000		TO STA. 2+750.000		
FED. ROAD DIST. NO.		ILLINOIS FED. AID PROJECT		
CONTRACT NO. 70514				

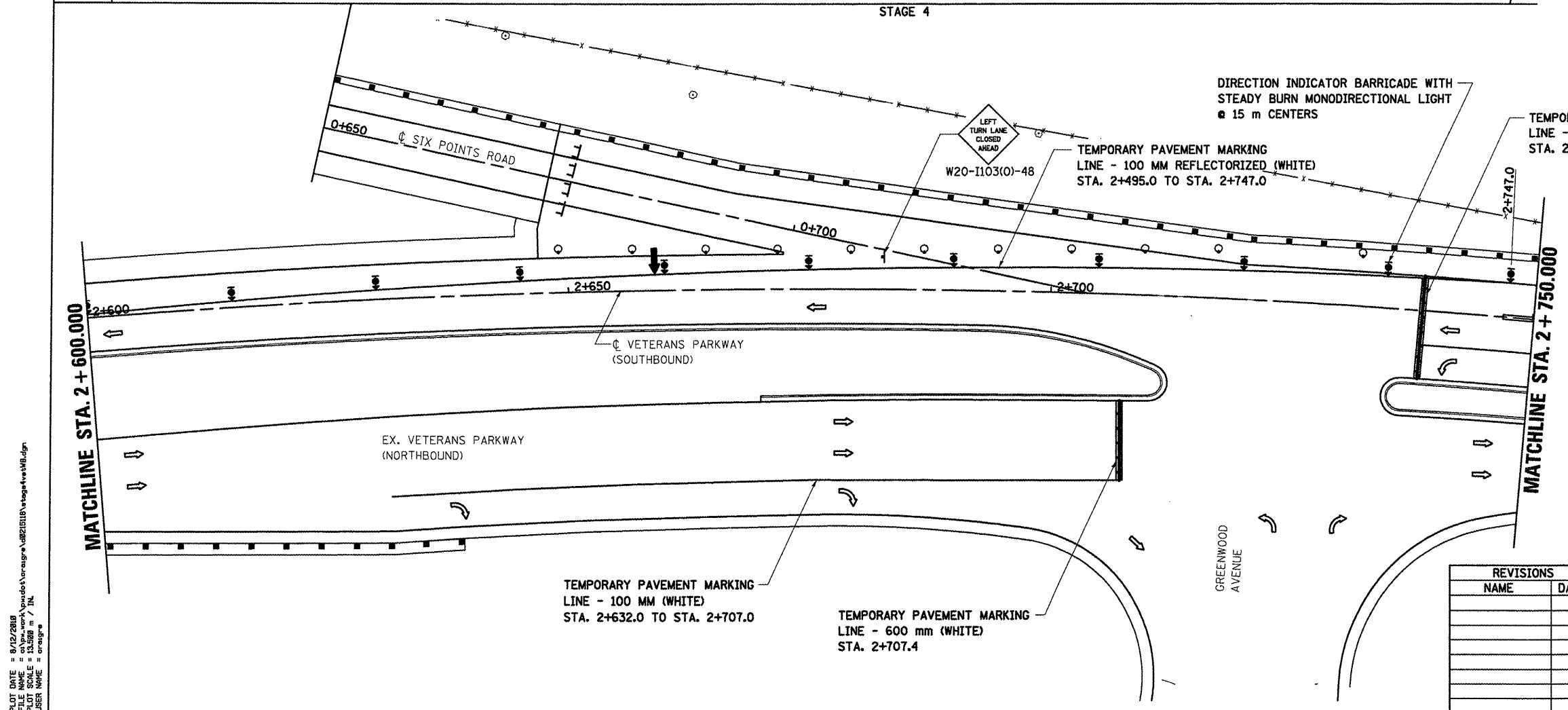
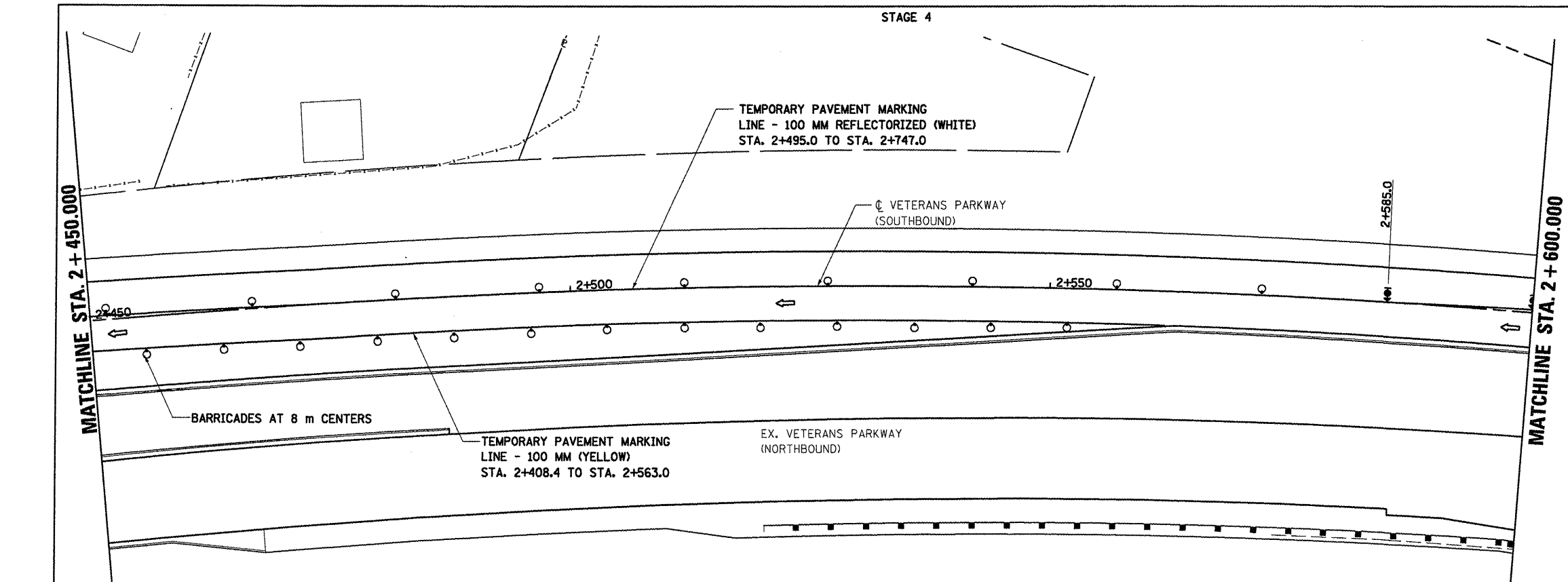


**LEGEND**

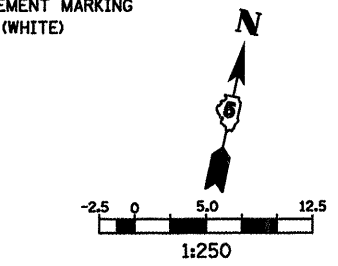
- SIGN
- DRUM, BARRICADE OR VERTICAL BARRICADE WITH STEADY BURNING LIGHT
- ▨ WORK AREA
- ⇐ DIRECTION OF TRAFFIC
- ⇑ DIRECTION INDICATOR BARRICADE WITH STEADY BURN MONODIRECTIONAL LIGHT

**GENERAL STAGING NOTES**

PLACE TYPE III BARRICADES IN ACCORDANCE WITH STANDARD 701901.  
SEE STANDARD 701422-02 FOR ADDITIONAL INFORMATION FOR LANE CLOSURE TRAFFIC CONTROL.



PLOT DATE = 5/12/2009  
 PLOT SCALE = 1:250  
 USER NAME = creggie



**LEGEND**

- TT TYPE III BARRICADE
- SIGN
- DRUM, BARRICADE OR VERTICAL BARRICADE WITH STEADY BURNING LIGHT
- ⇐ DIRECTION OF TRAFFIC
- ⇑ ARROW BOARD
- ⇑ DIRECTION INDICATOR BARRICADE WITH STEADY BURN MONODIRECTIONAL LIGHT

REVISIONS	
NAME	DATE

ILLINOIS DEPARTMENT OF TRANSPORTATION  
STAGING PLANS  
STAGE 4 VETERANS PARKWAY  
DRAWN BY SAM  
CHECKED BY PMH  
DATE 05/27/09

**STAGING PLANS, STAGE 4 VETERANS PARKWAY**