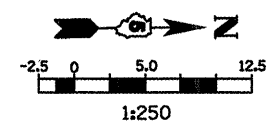


F.A.P. RTE.	SECTION	COUNTY	TOTAL SHEETS	SHEET NO.
704	(1)N & TS-1	McLEAN	497	138
STA. 0+000.000		TO STA. 0+264.874		
FED. ROAD DIST. NO.		ILLINOIS FED. AID PROJECT		
CONTRACT NO. 70514				



LEGEND

- ⊥ SIGN
- DRUM, BARRICADE OR VERTICAL BARRICADE WITH STEADY BURNING LIGHT
- ▨ WORK AREA
- FLEXIBLE DELINEATORS
- ⇨ DIRECTION OF TRAFFIC

GENERAL STAGING NOTES

MAINTAIN ACCESS TO ALL ADJACENT PROPERTIES THROUGHOUT THE DURATION OF THE PROJECT.

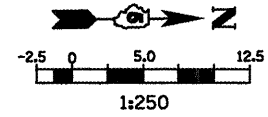
PLACE TYPE III BARRICADES IN ACCORDANCE WITH STANDARD 701901.

CLOSE SIDEWALKS AS NECESSARY IN ACCORDANCE WITH STANDARD 701801.

WORK TO BE COMPLETED IN STATE 4

CONSTRUCT CURB AND GUTTER FROM STA. 0+022.000 LT. TO STA. 0+120.000 LT.

CONSTRUCT FINAL PAVEMENT FROM STATION 0+150.000, RT TO STATION 0+264.874.



LEGEND

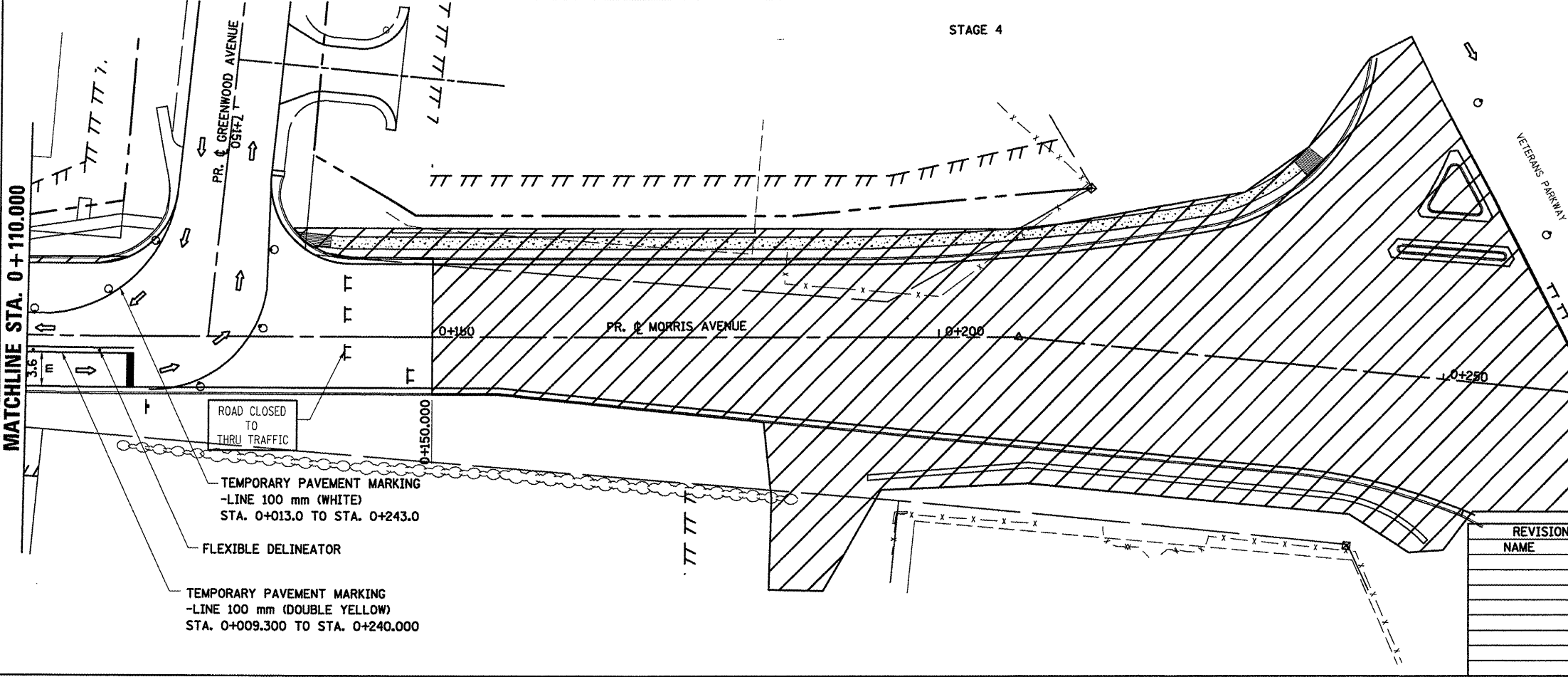
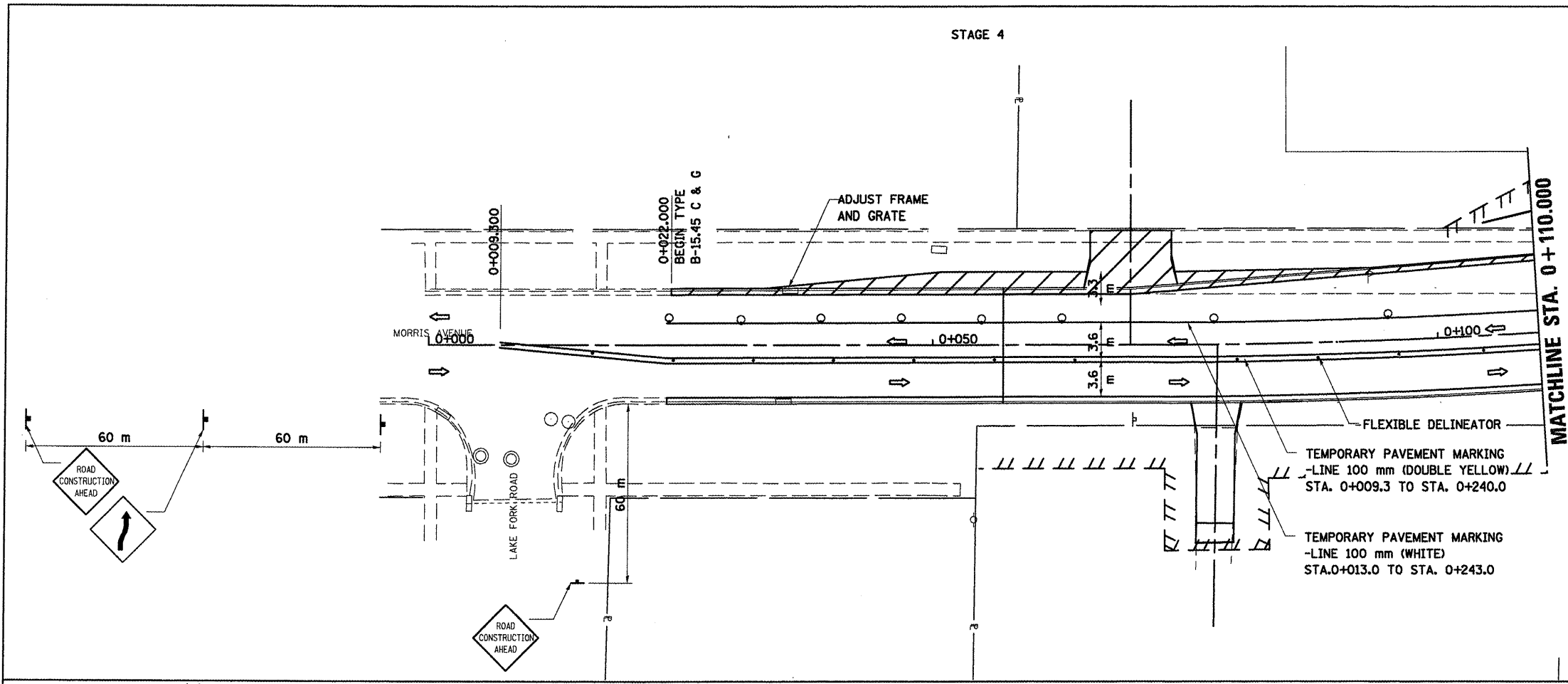
- ⊥ TYPE III BARRICADE
- ⊥ SIGN
- DRUM, BARRICADE OR VERTICAL BARRICADE WITH STEADY BURNING LIGHT
- ▨ WORK AREA
- FLEXIBLE DELINEATORS
- ⇨ DIRECTION OF TRAFFIC

REVISIONS	
NAME	DATE

ILLINOIS DEPARTMENT OF TRANSPORTATION

STAGING PLANS
STAGE 4 MORRIS AVENUE (SOUTH)

DRAWN BY SAM
CHECKED BY PMH
DATE 05-27-09



PLOT DATE = 8/16/2009
 FILE NAME = c:\pva\work\pva\stage4\morris_s\stage4morris_s.dgn
 PLOT SCALE = 1:250000 m / in.
 USER NAME = c:\pva\work\pva\stage4\morris_s

STAGING PLANS, STAGE 4 MORRIS AVENUE (SOUTH)