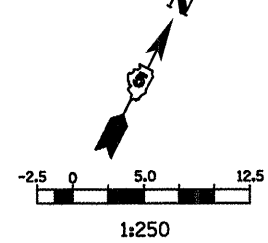


F.A.P. RTE.	SECTION	COUNTY	TOTAL SHEETS	SHEET NO.
704	(1)N & TS-1	McLEAN	497	139
STA. 10+000.000		TO STA. 10+300.000		
FED. ROAD DIST. NO.		ILLINOIS FED. AID PROJECT		
CONTRACT NO. 70514				

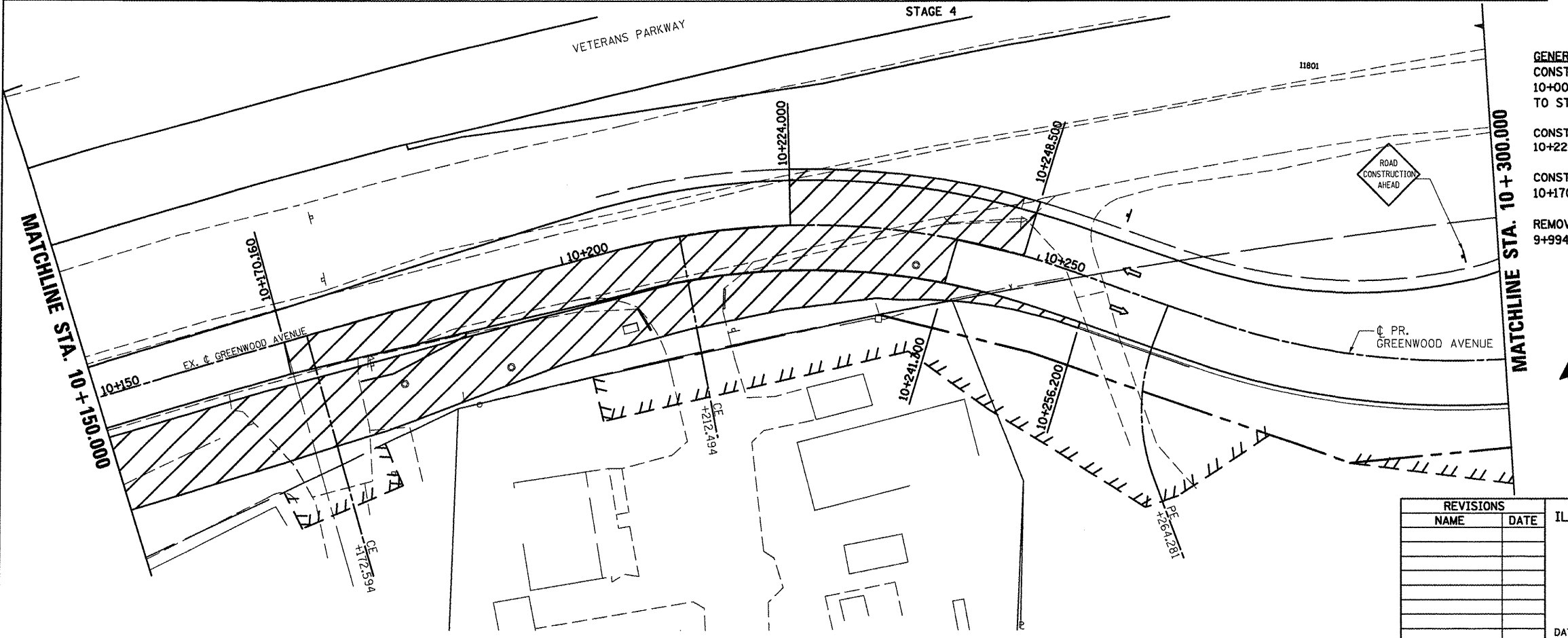
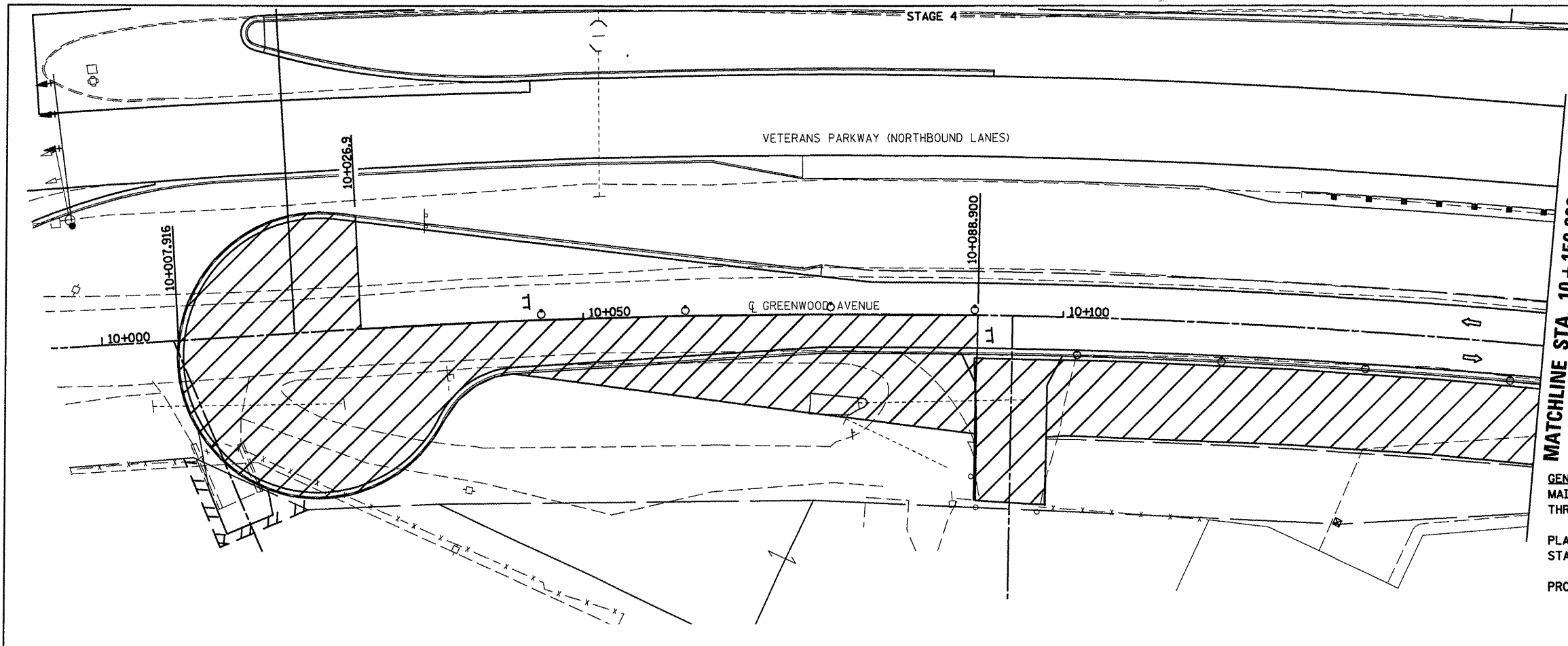


- LEGEND**
- TT TYPE III BARRICADE
  - SIGN
  - DRUM, BARRICADE OR VERTICAL BARRICADE WITH STEADY BURNING LIGHT
  - ▨ WORK AREA
  - ▩ TEMPORARY PAVEMENT
  - ⇨ DIRECTION OF TRAFFIC

**GENERAL STAGING NOTES**  
 MAINTAIN ACCESS TO ALL ADJACENT PROPERTIES THROUGHOUT THE DURATION OF THE PROJECT.

PLACE TYPE III BARRICADES IN ACCORDANCE WITH STANDARD 701901.

PROVIDE TEMPORARY MAILBOX SERVICE.



**GENERAL STAGING NOTES**  
 CONSTRUCT FINAL PAVEMENT FROM STATION 10+007.916 TO STA. 10+026.9 AND STA. 10+026.9 TO STA. 10+088.9, RT.

CONSTRUCT FINAL PAVEMENT FROM STATION 10+224.000 TO STATION 10+248.500, LEFT.

CONSTRUCT FINAL PAVEMENT FROM STATION 10+170.160 TO STATION 10+241.300, RIGHT.

REMOVE TEMPORARY PAVEMENT FROM STATION 9+994.8 TO STATION 10+256.200.

- LEGEND**
- SIGN
  - DRUM, BARRICADE OR VERTICAL BARRICADE WITH STEADY BURNING LIGHT
  - ▨ WORK AREA
  - ▩ TEMPORARY PAVEMENT
  - ⇨ DIRECTION OF TRAFFIC

ILLINOIS DEPARTMENT OF TRANSPORTATION

STAGING PLANS  
 STAGE 4 GREENWOOD AVENUE (EAST)

DRAWN BY SAM  
 CHECKED BY PMH

DATE 05-27-09

REVISIONS	
NAME	DATE

PLOT DATE = 6/12/09  
 FILE NAME = c:\work\projects\stage4\stage4.dwg  
 PLOT SCALE = 1:25000 m / in.  
 USER NAME = cengr

**STAGING PLANS, STAGE 4 GREENWOOD AVENUE (EAST)**