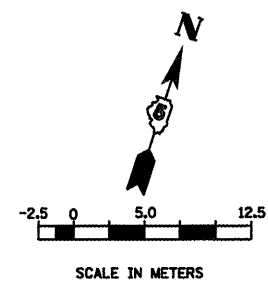
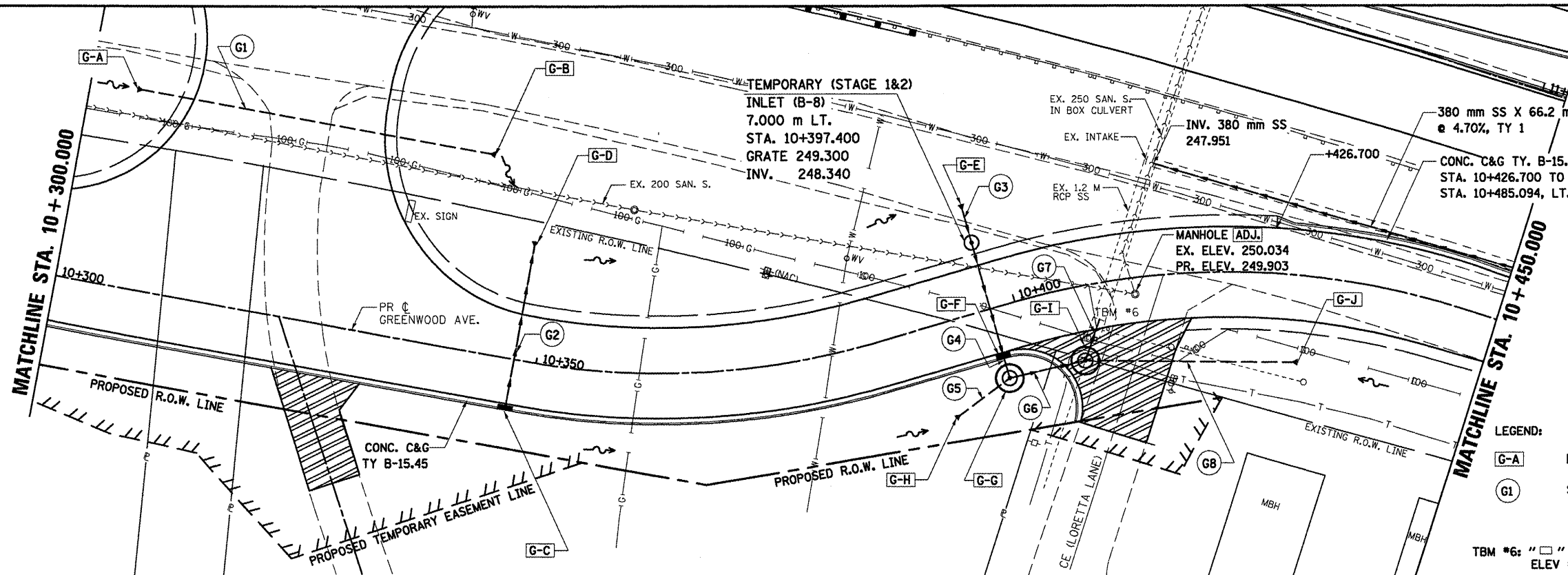


F.A.P. RTE.	SECTION	COUNTY	TOTAL SHEETS	SHEET NO.
704	(DN & TS-1)	McLEAN	497	183
STA. 10+300.000		TO STA. 10+450.000		
FED. ROAD DIST. NO.		ILLINOIS FED. AID PROJECT		CONTRACT NO. 70514



FINAL SURVEY PLOTTED	BY	DATE
NOTE BOOK TEMPLATE		
AREAS CHECKED		
NO.		

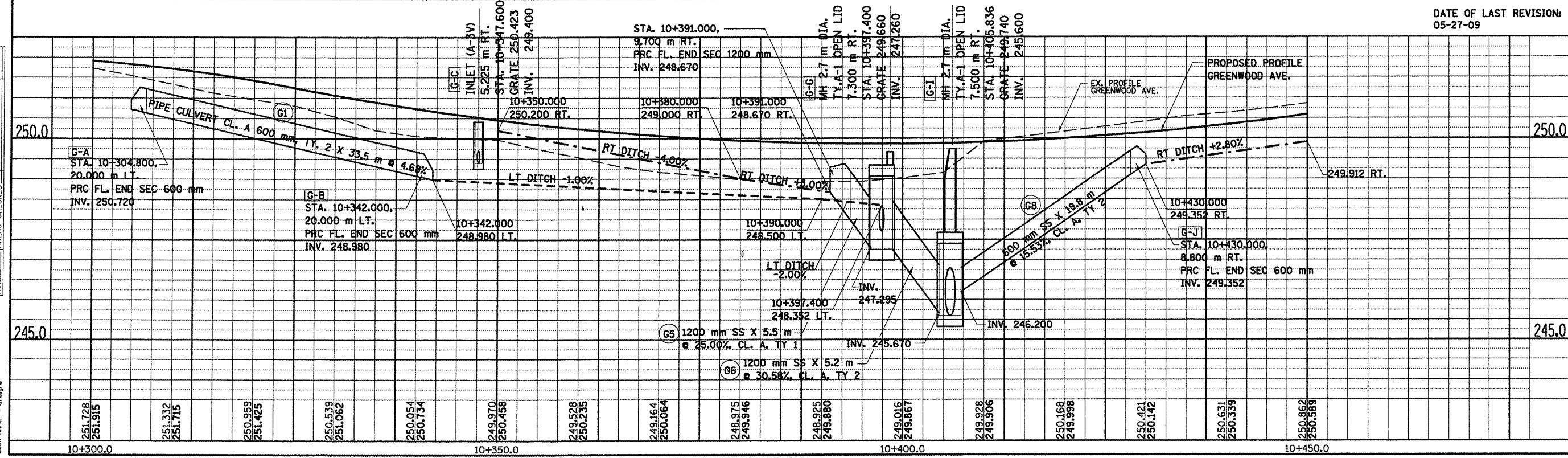


STRUCTURE NO.	TYPE	STATION	OFFSET	GRATE ELEV.	INVERT
G-A	PRC FL. END SEC. 600 MM	10+304.800	20.000 LT	---	250.720
G-B	PRC FL. END SEC. 600 MM	10+342.000	20.000 LT	---	248.980
G-C	INLET TY. A, TY. 3V FR & GR	10+347.600	5.225 RT	250.423	249.400
G-D	PRC FL. END SEC. 300 MM	10+347.600	12.100 LT	---	249.924
G-E	PRC FL. END SEC. 600 MM	10+397.400	11.000 LT	---	248.352
G-F	INLET TY. B, TY. 3 FR & GR	10+397.400	5.225 RT	249.769	248.198
G-G	MH TY. A, 2.7 m DIA. TY 1 FR. & GR.	10+397.400	7.300 RT	249.660	247.260
G-H	PRC FL. END SEC. 1200 MM	10+391.000	9.700 RT	---	248.670
G-I	MH TY. A, 2.7 m DIA. TY 1 FR. & GR.	10+405.836	7.500 RT	249.740	245.600
G-J	PRC FL. END SEC. 600 MM	10+430.000	8.800 RT	---	249.352

PIPE NO.	FROM	TO	LENGTH (M)	TYPE	SLOPE (%)	TRENCH BACKFILL (CU M)
G1	G-A	G-B	33.5	P. CUL. CL. A, TY 2 600	4.68	19.0
G2	G-C	G-D	14.6	SS CL. A, TY 1 300	2.89	4.7
G3	G-E	G-F	13.5	SS CL. A, TY 1 600	1.00	5.1
G4	G-F	G-G	0.8	SS CL. A, TY 1 600	4.00	0.6
G5	G-H	G-G	3.0	SS CL. A, TY 1 1200	25.00	0.0
G6	G-G	G-I	5.2	SS CL. A, TY 2 1200	30.58	12.8
G7	1.2M SS	G-I	3.1	SS CL. A, TY 2 1200	3.87	19.7
G8	G-J	G-I	19.8	SS CL. A, TY 2 600	15.53	19.0

LEGEND:
 G-A DRAINAGE STRUCTURE (SEE TABULATION)
 G1 STORM SEWER (SEE TABULATION)
 TBM #6: " " CUT IN SW CORNER OF CONCRETE INTAKE ELEV = 249.710

ORIGINAL SURVEY PLOTTED	BY	DATE
NOTE BOOK TEMPLATE		
AREAS CHECKED		
NO.		



DATE OF LAST REVISION:
05-27-09