

F.A.P. RTE.	SECTION	COUNTY	TOTAL SHEETS	SHEET NO.
704	(DN & TS-1)	McLEAN	497	193
STA. N/A		TO STA. N/A		
FED. ROAD DIST. NO.		ILLINOIS FED. AID PROJECT		
CONTRACT NO. 70514				

**SO-DEEP** Inc.  
The Subsurface Utility Engineering Company  
8397 Euclid Avenue  
Manassas Park, VA 20111  
(703) 361-6005

### So-Deep Test Hole Certification Form - Metric

© So-Deep, Inc. 1988, 1994

City, County, State **MCLEAN CO., IL**  
Gen. Loc. **MORRIS AVE., N. OF GREENWOOD AVE.**  
Recorded Size/Material/Type **(3) 102MM PLAS. TELE. CONDUITS**  
Foreman/Truck#/Form By **J. HARLIN /221 /M. LOSE**

Condition of paving prior to work  
**NO PAVING**

Control # **SILA063**  
Test Hole # **3**  
Plan Scale **1:250**  
Sheet # **13**  
Proposed Date **GRADE CHANGE**  
**OCTOBER 21, 2005**

B.M. 1 Elev. = **253.445M**  
is **GIVEN**  
Description: **(TRAV 2005) CHIS. "X" FOUND; 2.10M ± LT OF STA. 0+221.00± S. MORRIS AVE.**

B.M. 2 Elev. = **251.463M**  
is **GIVEN**  
Description: **(TRAV 2000) TOP OF RR SPIKE FOUND; 20.40M ± RT OF STA. 0+402.60± S. MORRIS AVE.**

Benchmarks check **BY 0.004M**  
Elevations are referenced to **B.M.#1**

SO-DEEP will attempt to use the BM#1 most applicable to your design. If however, BMs differ by more than .05', resulting differences could cause design conflicts.

Recorded Size/Type of utility **WAS FOUND**

There **WERE NOT** additional utilities in the test hole.

The utility **WAS** in good condition.

Paving Thickness and type **NO PAVE**

Color of ribbon installed **ORANGE**

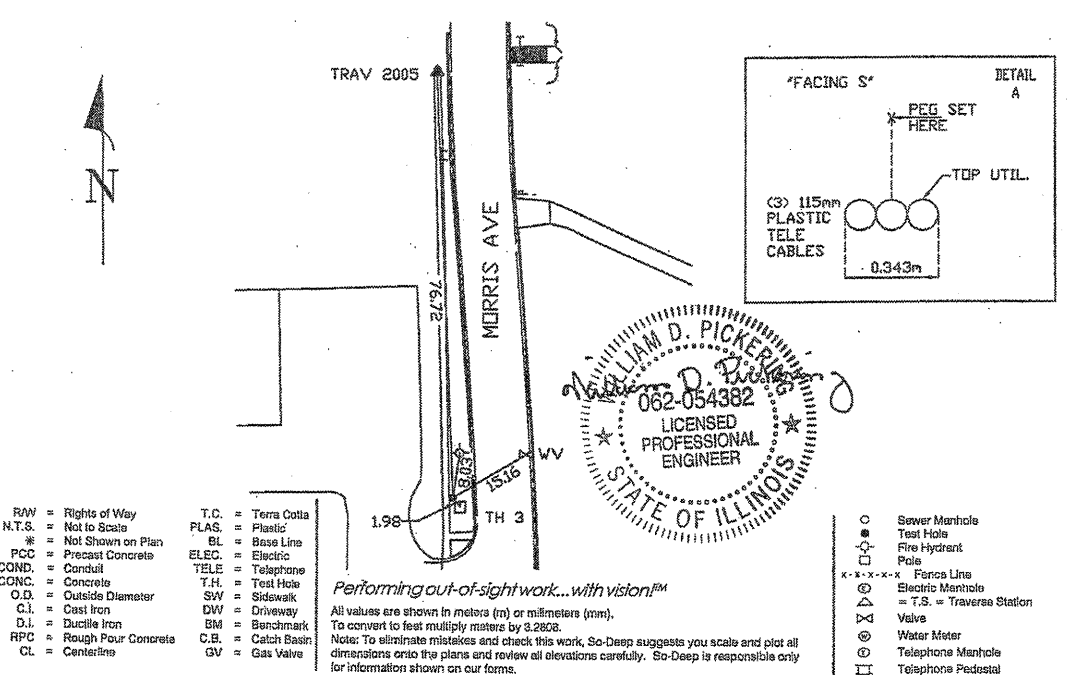
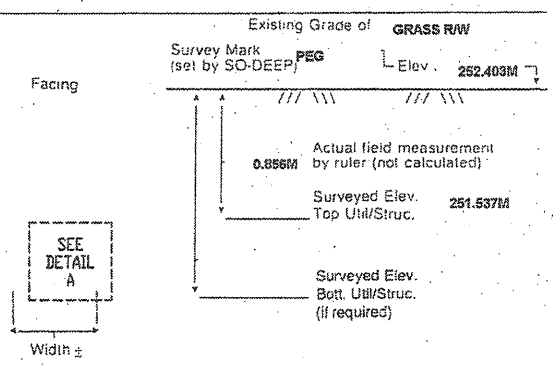
Soil Type **DRY, SANDY**

Field Condition **GRASS RW**

T.H. tied to **PEG**

**(3) 115MM PLAS. TELE. CABLES**  
Size/Material/Type  
Portion of pipe exposed for O.D. measurement:  
**N/A**

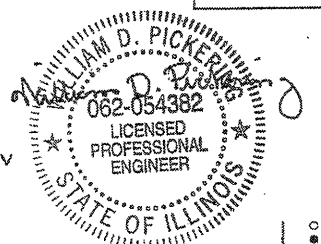
Remarks: **NONE**



- R/W = Rights of Way
- N.T.S. = Not to Scale
- \* = Not Shown on Plan
- PCC = Precast Concrete
- COND. = Conduit
- CONC. = Concrete
- O.D. = Outside Diameter
- C.I. = Cast Iron
- D.I. = Ductile Iron
- RPC = Rough Pour Concrete
- CL = Centeline
- T.C. = Terra Cotta
- PLAS. = Plastic
- BL = Base Line
- ELEC. = Electric
- TELE = Telephone
- T.H. = Test Hole
- SW = Sidewalk
- DW = Driveway
- BM = Benchmark
- C.B. = Catch Basin
- GV = Gas Valve

*Performing out-of-sight work... with vision!*  
All values are shown in meters (m) or millimeters (mm).  
Note: To eliminate mistakes and check this work, So-Deep suggests you scale and plot all dimensions onto the plans and review all elevations carefully. So-Deep is responsible only for information shown on our forms.

- = Sewer Manhole
- = Test Hole
- ⊙ = Fire Hydrant
- ⊙ = Pole
- ⊙-x-x-x-x = Fence Line
- ⊙ = Electric Manhole
- ⊙-T.S. = Traverse Station
- ⊙ = Valve
- ⊙ = Water Meter
- ⊙ = Telephone Manhole
- ⊙ = Telephone Pedestal



**SO-DEEP** Inc.  
The Subsurface Utility Engineering Company  
8397 Euclid Avenue  
Manassas Park, VA 20111  
(703) 361-6005

### So-Deep Test Hole Certification Form - Metric

© So-Deep, Inc. 1988, 1994

City, County, State **MCLEAN CO., IL**  
Gen. Loc. **MORRIS AVE., S. OF GREENWOOD AVE.**  
Recorded Size/Material/Type **(3) 102MM PLAS. TELE. CONDUITS**  
Foreman/Truck#/Form By **J. HARLIN /221 /M. LOSE**

Condition of paving prior to work  
**CONC S/W IN GOOD COND.**

Control # **SILA063**  
Test Hole # **4**  
Plan Scale **1:250**  
Sheet # **13**  
Proposed Date **GRADE CHANGE**  
**OCTOBER 21, 2005**

B.M. 1 Elev. = **253.445M**  
is **GIVEN**  
Description: **(TRAV 2005) CHIS. "X" FOUND; 2.10M ± LT OF STA. 0+221.00± S. MORRIS AVE.**

B.M. 2 Elev. = **251.463M**  
is **GIVEN**  
Description: **(TRAV 2000) TOP OF RR SPIKE FOUND; 20.40M ± RT OF STA. 0+402.60± S. MORRIS AVE.**

Benchmarks check **BY 0.004M**  
Elevations are referenced to **B.M.#1**

SO-DEEP will attempt to use the BM#1 most applicable to your design. If however, BMs differ by more than .05', resulting differences could cause design conflicts.

Recorded Size/Type of utility **WAS FOUND**

There **WERE NOT** additional utilities in the test hole.

The utility **WAS** in good condition.

Paving Thickness and type **102MM CONC**

Color of ribbon installed **ORANGE**

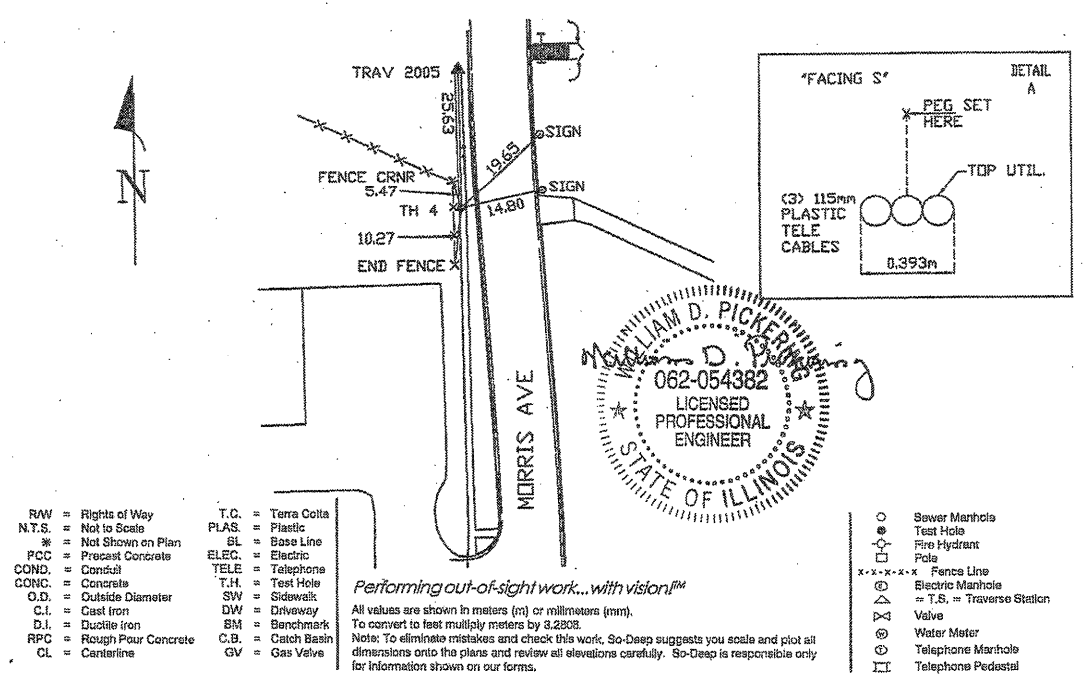
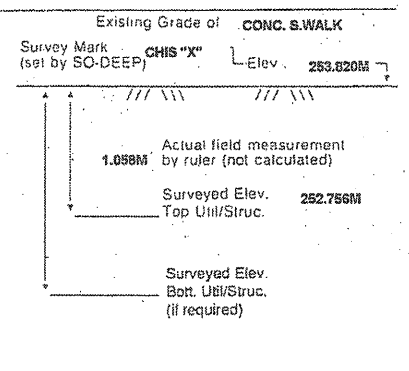
Soil Type **DRY, SANDY**

Field Condition **CONC S/W**

T.H. tied to **CHIS "X"**

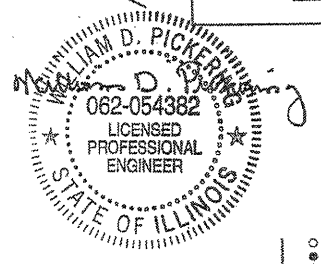
**(3) 115MM PLAS. TELE. CONDUITS**  
Size/Material/Type  
Portion of pipe exposed for O.D. measurement:  
**N/A**

Remarks: **NONE**



- R/W = Rights of Way
- N.T.S. = Not to Scale
- \* = Not Shown on Plan
- PCC = Precast Concrete
- COND. = Conduit
- CONC. = Concrete
- O.D. = Outside Diameter
- C.I. = Cast Iron
- D.I. = Ductile Iron
- RPC = Rough Pour Concrete
- CL = Centeline
- T.C. = Terra Cotta
- PLAS. = Plastic
- BL = Base Line
- ELEC. = Electric
- TELE = Telephone
- T.H. = Test Hole
- SW = Sidewalk
- DW = Driveway
- BM = Benchmark
- C.B. = Catch Basin
- GV = Gas Valve

*Performing out-of-sight work... with vision!*  
All values are shown in meters (m) or millimeters (mm).  
Note: To eliminate mistakes and check this work, So-Deep suggests you scale and plot all dimensions onto the plans and review all elevations carefully. So-Deep is responsible only for information shown on our forms.



- = Sewer Manhole
- = Test Hole
- ⊙ = Fire Hydrant
- ⊙ = Pole
- ⊙-x-x-x-x = Fence Line
- ⊙ = Electric Manhole
- ⊙-T.S. = Traverse Station
- ⊙ = Valve
- ⊙ = Water Meter
- ⊙ = Telephone Manhole
- ⊙ = Telephone Pedestal

REVISIONS	
NAME	DATE

ILLINOIS DEPARTMENT OF TRANSPORTATION  
**SUBSURFACE UTILITY ENGINEERING DETAILS**  
SHEET 2 OF 11  
DRAWN BY **SAM**  
CHECKED BY **PMH**  
DATE **5/27/09**