

F.A.P. RTE.	SECTION	COUNTY	TOTAL SHEETS	SHEET NO.
704	QIN & TS-1	McLEAN	497	194
STA. N/A		TO STA. N/A		
FED. ROAD DIST. NO.		ILLINOIS FED. AID PROJECT		
CONTRACT NO. 70514				

SO-DEEP Inc.
The Subsurface Utility Engineering Company
8397 Euclid Avenue
Manassas Park, VA 20111
(703) 361-6005

So-Deep Test Hole Certification Form - Metric

© So-Deep, Inc. 1988, 1994

City, County, State **MCLEAN CO., IL**
Gen. Loc. **MORRIS AVE., S. OF VETERANS PKWY. INT.**
Recorded Size/Material/Type **102MM STEEL GAS LINE**
Foreman/Truck#/Form By **J. HARLIN /221 /M. LOSE**

Condition of paving prior to work
NO PAVING

Control # **SILA093**
Test Hole # **6**
Plan Scale **1:250**
Sheet # **11**
Proposed Date **GRADE CHANGE**
Date **OCTOBER 21, 2005**

B.M. 1 Elev. = **253.445M**
is **GIVEN**
Description: **(TRAV 2005) CHIS. "X" FOUND; 2.10M ± LT OF STA. 0+221.00± S. MORRIS AVE.**

B.M. 2 Elev. = **251.463M**
is **GIVEN**
Description: **(TRAV 2000) TOP OF RR SPIKE FOUND; 20.40M ± RT OF STA. 0+402.60± S. MORRIS AVE.**

SO-DEEP will attempt to use the B.M.#1 most applicable to your design. If however, B.Ms differ by more than .05', resulting differences could cause design conflicts.

Benchmarks check **BY 0.004M**
Elevations are referenced to **B.M.#1**

Recorded Size/Type of utility **WAS FOUND**

There **WERE NOT** additional utilities in the test hole.

The utility **WAS** in good condition.

Paving Thickness and type **NO PAVE**

Color of ribbon installed **YELLOW**

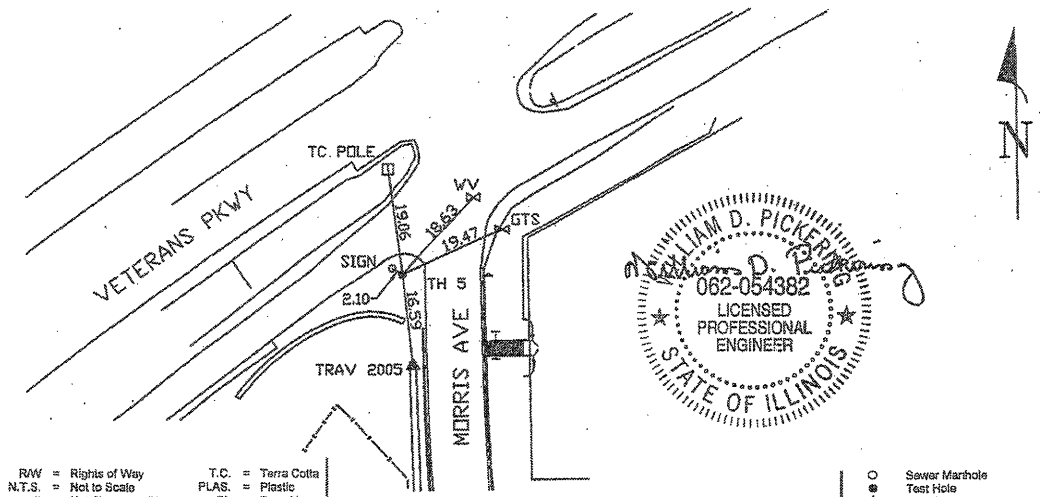
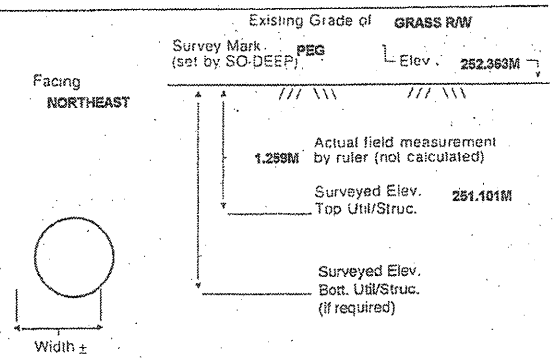
Soil Type **MOIST, BROWN**

Field Condition **GRASS R/W**

T.H. tied to **PEG**

115MM COATED STEEL GAS LINE
Size/Material/Type
Portion of pipe exposed for O.D. measurement:
FULL

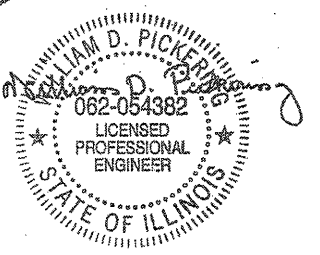
Remarks: **NONE**



- R/W = Rights of Way
- N.T.S. = Not to Scale
- % = Not Shown on Plan
- PCC = Precast Concrete
- COND. = Conduit
- CONC. = Concrete
- O.D. = Outside Diameter
- C.I. = Cast Iron
- D.I. = Ductile Iron
- RPC = Rough Pour Concrete
- CL = Centerline
- T.C. = Terra Cotta
- PLAS. = Plastic
- BL = Base Line
- ELEC. = Electric
- TELE = Telephone
- T.H. = Test Hole
- SW = Sidewalk
- DW = Driveway
- BM = Benchmark
- C.B. = Catch Basin
- GV = Gas Valve

Performing out-of-sight work...with vision!
All values are shown in meters (m) or millimeters (mm).
To convert to feet multiply meters by 3.2808.
Note: To eliminate mistakes and check this work, So-Deep suggests you scale and plot all dimensions onto the plans and review all elevations carefully. So-Deep is responsible only for information shown on our forms.

- Sewer Manhole
- Test Hole
- ⊕ Fire Hydrant
- ⊙ Pole
- ⊗ Fence Line
- ⊙ Electric Manhole
- ⊙ T.S. = Traverse Station
- ⊕ Valve
- ⊕ Water Meter
- ⊕ Telephone Manhole
- ⊕ Telephone Pedestal



SO-DEEP Inc.
The Subsurface Utility Engineering Company
8397 Euclid Avenue
Manassas Park, VA 20111
(703) 361-6005

So-Deep Test Hole Certification Form - Metric

© So-Deep, Inc. 1988, 1994

City, County, State **MCLEAN CO., IL**
Gen. Loc. **VETERAN'S PKWY., 123M± E. OF MORRIS AVE.**
Recorded Size/Material/Type **UNK. SIZE/MAT/ WATER & 102MM STEEL GAS LINES**
Foreman/Truck#/Form By **J. HARLIN /221 /M. LOSE**

Condition of paving prior to work
NO PAVING

Control # **SILA093**
Test Hole # **6**
Plan Scale **1:250**
Sheet # **11**
Proposed Date **GRADE CHANGE**
Date **OCTOBER 22, 2005**

B.M. 1 Elev. = **251.463M**
is **GIVEN**
Description: **(TRAV 2000) TOP OF RR SPIKE FOUND; 20.40M ± RIGHT OF STATION 0+402.60± S. MORRIS AVE.**

B.M. 2 Elev. = **250.851M**
is **CALCULATED**
Description: **CHIS. "X" SET TOP RIM 65MM; 14.0M± LEFT OF STATION 0+418.20± S. MORRIS AVE.**

SO-DEEP will attempt to use the B.M.#1 most applicable to your design. If however, B.Ms differ by more than .05', resulting differences could cause design conflicts.

Benchmarks check **BY 0.003M**
Elevations are referenced to **B.M.#2**

Recorded Size/Type of utility **WAS NOT FOUND, SEE REMARKS**

There **WERE** additional utilities in the test hole.

The utility **WAS** in good condition.

Paving Thickness and type **NO PAVE**

Color of ribbon installed **YELLOW**

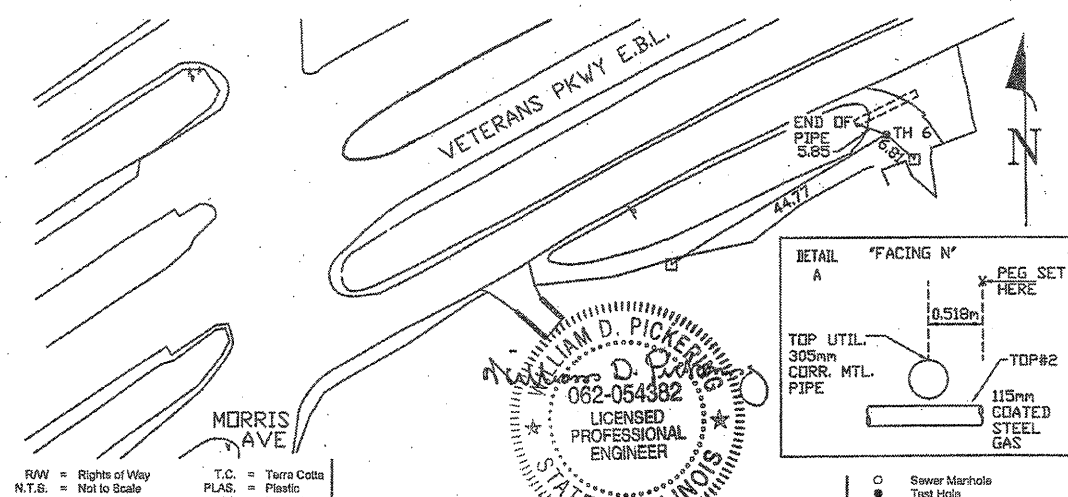
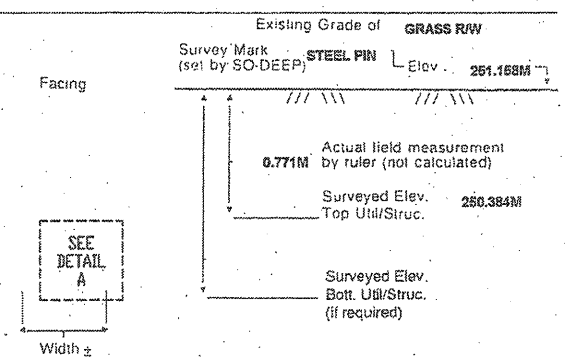
Soil Type **DRY, HARD CLAY**

Field Condition **GRASS R/W**

T.H. tied to **STEEL PIN**

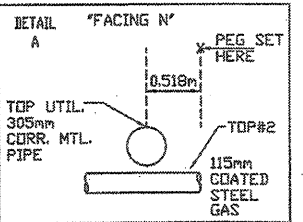
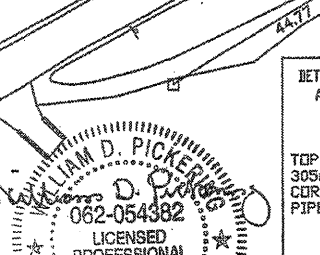
305MM CORRUGATED METAL PIPE
Size/Material/Type
Portion of pipe exposed for O.D. measurement:
FULL

Remarks: ***ALSO FOUND IN T.H. A 116MM COATED STEEL GAS LINE RUNNING BELOW & PERPENDICULAR TO THE 305MM CORRUGATED METAL PIPE.**



- R/W = Rights of Way
- N.T.S. = Not to Scale
- % = Not Shown on Plan
- PCC = Precast Concrete
- COND. = Conduit
- CONC. = Concrete
- O.D. = Outside Diameter
- C.I. = Cast Iron
- D.I. = Ductile Iron
- RPC = Rough Pour Concrete
- CL = Centerline
- T.C. = Terra Cotta
- PLAS. = Plastic
- BL = Base Line
- ELEC. = Electric
- TELE = Telephone
- T.H. = Test Hole
- SW = Sidewalk
- DW = Driveway
- BM = Benchmark
- C.B. = Catch Basin
- GV = Gas Valve

Performing out-of-sight work...with vision!
All values are shown in meters (m) or millimeters (mm).
To convert to feet multiply meters by 3.2808.
Note: To eliminate mistakes and check this work, So-Deep suggests you scale and plot all dimensions onto the plans and review all elevations carefully. So-Deep is responsible only for information shown on our forms.



REVISIONS	
NAME	DATE

ILLINOIS DEPARTMENT OF TRANSPORTATION

SUBSURFACE UTILITY ENGINEERING DETAILS
SHEET 3 OF 11

DRAWN BY **SAM**
CHECKED BY **PMH**

DATE **5/27/09**