

F.A.P. RTE.	SECTION	COUNTY	TOTAL SHEETS NO.	SHEET NO.
704	(IN & TS-1)	McLEAN	497	195
STA. N/A		TO STA. N/A		
FED. ROAD DIST. NO.		ILLINOIS FED. AID PROJECT		
CONTRACT NO. 70514				

**SO-DEEP Inc.**  
The Subsurface Utility Engineering Company  
8397 Euclid Avenue  
Manassas Park, VA 20111  
(703) 361-6005

### So-Deep Test Hole Certification Form - Metric

© So-Deep, Inc. 1988, 1994

City, County, State **MCLEAN CO., IL**  
Gen. Loc. **MORRIS AVE. S. OF GREENWOOD AVE. INT.**  
Recorded Size/Material/Type **203MM UNK. MATERIAL WATER LINE**  
Foreman/Truck#/Form By **J. HARLIN /221 /M. LOSE**

Control # **SILA093**  
Test Hole # **7**  
Plan Scale **1:250**  
Sheet # **13**  
Proposed Date **GRADE CHANGE**  
Date **OCTOBER 21, 2005**

Condition of paving prior to work  
**NO PAVING**

B.M. 1 Elev. = **253.445M**  
is GIVEN Description: **(TRAV 2005) CHIS. "X" FOUND; 2.10M ± LT OF STA. 0+221.00± S. MORRIS AVE.**

B.M. 2 Elev. = **251.463M**  
is GIVEN Description: **(TRAV 2000) TOP OF RR SPIKE FOUND; 20.40M ± RT OF STA. 0+402.60± S. MORRIS AVE.**

SO-DEEP will attempt to use the BM/HI most applicable to your design. If however, BM's differ by more than .05, resulting differences could cause design conflicts.

Benchmarks check BY **0.004M**  
Elevations are referenced to **B.M.#1**

Recorded Size/Type of utility **WAS FOUND**

There **WERE NOT** additional utilities in the test hole

The utility **WAS** in good condition.

Paving Thickness and type **NO PAVE**

Color of ribbon installed **BLUE**

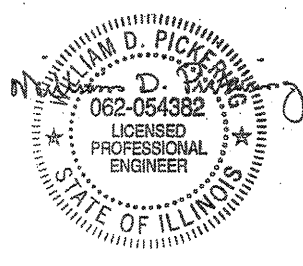
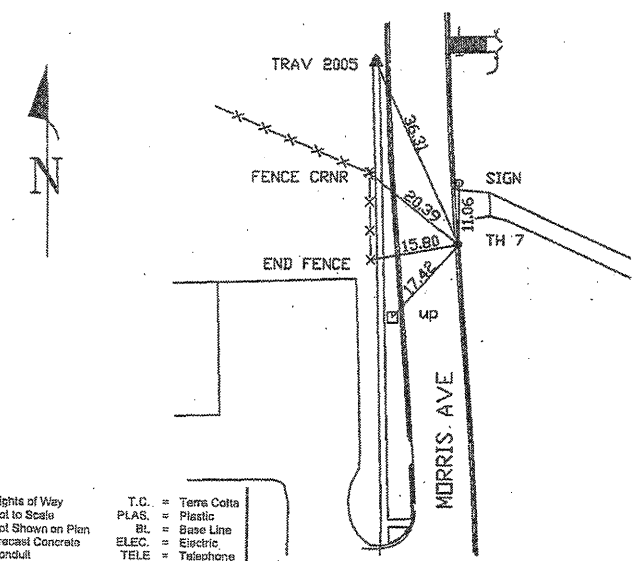
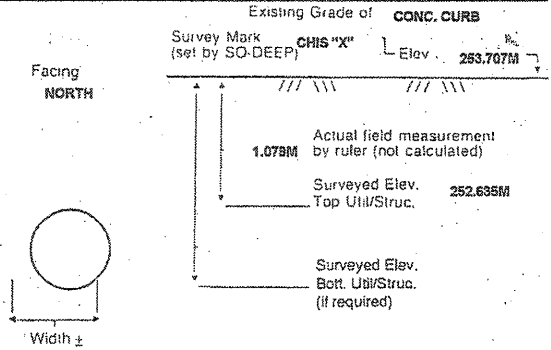
Soil Type **MOIST, ROCKY**

Field Condition **CONC CURB**

T.H. tied to **CHIS "X"**

**225MM CAST IRON WATER LINE**  
Size/Material/Type  
Portion of pipe exposed for O.D. measurement:  
**FULL**

Remarks: NOTE: ADDITIONAL UTILITIES MAY LIE IN CLOSE PROXIMITY TO THIS TEST HOLE. REFER TO SILA093, T.H. #8.



- RAW = Rights of Way
- N.T.S. = Not to Scale
- \* = Not Shown on Plan
- PCC = Precast Concrete
- COND. = Conduit
- CONC. = Concrete
- O.D. = Outside Diameter
- C.I. = Cast Iron
- D.I. = Ductile Iron
- RPC = Rough Pour Concrete
- CL = Centerline
- T.C. = Terra Cotta
- PLAS. = Plastic
- BL = Base Line
- ELEC. = Electric
- TELE. = Telephone
- T.H. = Test Hole
- SW = Sidewalk
- DW = Driveway
- BM = Benchmark
- C.B. = Catch Basin
- GV = Gas Valve

Performing out-of-sight work...with vision!<sup>SM</sup>  
All values are shown in meters (m) or millimeters (mm).  
To convert to feet multiply meters by 3.2808.  
Note: To eliminate mistakes and check this work, So-Deep suggests you scale and plot all dimensions onto the plans and review all elevations carefully. So-Deep is responsible only for information shown on our forms.

- = Sewer Manhole
- = Test Hole
- ⊕ = Fire Hydrant
- ⊙ = Pole
- ⊗ = Force Line
- ⊚ = Electric Manhole
- ⊛ = T.S. = Traverse Station
- ⊜ = Valve
- ⊝ = Water Meter
- ⊞ = Telephone Manhole
- ⊟ = Telephone Pedestal

**SO-DEEP Inc.**  
The Subsurface Utility Engineering Company  
8397 Euclid Avenue  
Manassas Park, VA 20111  
(703) 361-6005

### So-Deep Test Hole Certification Form - Metric

© So-Deep, Inc. 1988, 1994

City, County, State **MCLEAN CO., IL**  
Gen. Loc. **MORRIS AVE. S. OF GREENWOOD AVE. INT.**  
Recorded Size/Material/Type **102MM STEEL GAS LINE**  
Foreman/Truck#/Form By **J. HARLIN /221 /M. LOSE**

Control # **SILA093**  
Test Hole # **8**  
Plan Scale **1:250**  
Sheet # **13**  
Proposed Date **GRADE CHANGE**  
Date **OCTOBER 21, 2005**

Condition of paving prior to work  
**NO PAVING**

B.M. 1 Elev. = **253.445M**  
is GIVEN Description: **(TRAV 2005) CHIS. "X" FOUND; 2.10M ± LT OF STA. 0+221.00± S. MORRIS AVE.**

B.M. 2 Elev. = **251.463M**  
is GIVEN Description: **(TRAV 2000) TOP OF RR SPIKE FOUND; 20.40M ± RT OF STA. 0+402.60± S. MORRIS AVE.**

SO-DEEP will attempt to use the BM/HI most applicable to your design. If however, BM's differ by more than .05, resulting differences could cause design conflicts.

Benchmarks check BY **0.004M**  
Elevations are referenced to **B.M.#1**

Recorded Size/Type of utility **WAS FOUND**

There **WERE NOT** additional utilities in the test hole

The utility **WAS** in good condition.

Paving Thickness and type **NO PAVE**

Color of ribbon installed **YELLOW**

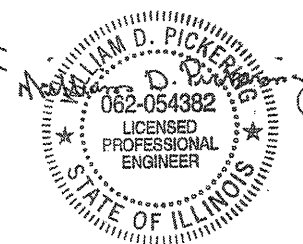
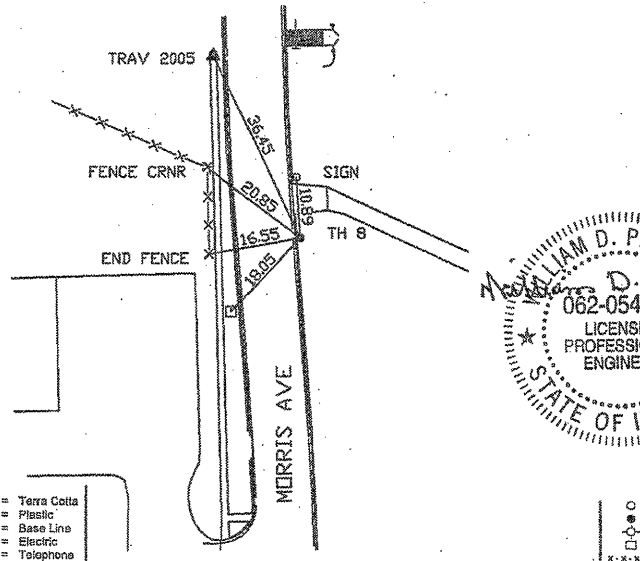
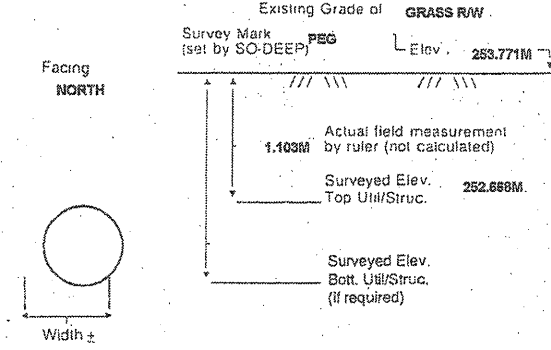
Soil Type **DRY, HARD**

Field Condition **GRASS R/W**

T.H. tied to **PEG**

**115MM WRAPPED STEEL GAS LINE**  
Size/Material/Type  
Portion of pipe exposed for O.D. measurement:  
**FULL**

Remarks: NOTE: ADDITIONAL UTILITIES MAY LIE IN CLOSE PROXIMITY TO THIS TEST HOLE. REFER TO SILA093, T.H. #7.



- RAW = Rights of Way
- N.T.S. = Not to Scale
- \* = Not Shown on Plan
- PCC = Precast Concrete
- COND. = Conduit
- CONC. = Concrete
- O.D. = Outside Diameter
- C.I. = Cast Iron
- D.I. = Ductile Iron
- RPC = Rough Pour Concrete
- CL = Centerline
- T.C. = Terra Cotta
- PLAS. = Plastic
- BL = Base Line
- ELEC. = Electric
- TELE. = Telephone
- T.H. = Test Hole
- SW = Sidewalk
- DW = Driveway
- BM = Benchmark
- C.B. = Catch Basin
- GV = Gas Valve

Performing out-of-sight work...with vision!<sup>SM</sup>  
All values are shown in meters (m) or millimeters (mm).  
To convert to feet multiply meters by 3.2808.  
Note: To eliminate mistakes and check this work, So-Deep suggests you scale and plot all dimensions onto the plans and review all elevations carefully. So-Deep is responsible only for information shown on our forms.

- = Sewer Manhole
- = Test Hole
- ⊕ = Fire Hydrant
- ⊙ = Pole
- ⊗ = Force Line
- ⊚ = Electric Manhole
- ⊛ = T.S. = Traverse Station
- ⊜ = Valve
- ⊝ = Water Meter
- ⊞ = Telephone Manhole
- ⊟ = Telephone Pedestal

REVISIONS	
NAME	DATE

ILLINOIS DEPARTMENT OF TRANSPORTATION

SUBSURFACE UTILITY  
ENGINEERING DETAILS  
SHEET 4 OF 11

DRAWN BY **SAM**  
CHECKED BY **PMH**  
DATE **5/27/09**