

F.A.P. RTE.	SECTION	COUNTY	TOTAL SHEETS	SHEET NO.
704	1DN & TS-1	McLEAN	497	196
STA. N/A		TO STA. N/A		
FED. ROAD DIST. NO.		ILLINOIS FED. AID PROJECT		
CONTRACT NO. 70514				

**SO-DEEP Inc.**  
The Subsurface Utility Engineering Company  
8397 Euclid Avenue  
Manassas Park, VA 20111  
(703) 361-6005

### So-Deep Test Hole Certification Form - Metric

© So-Deep, Inc. 1988, 1994

City, County, State **MCLEAN CO., IL**  
Gen. Loc. **INT. OF SIX POINTS & SZAREK RDS.**  
Recorded Size/Material/Type **203MM UNK. MAT. WATER LINE**  
Foreman/Truck#/Form By **J. HARLIN /221 /M. LOSE**

Condition of paving prior to work  
**NO PAVING**

Control # **SILA093**  
Test Hole # **8**  
Plan Scale **1:250**  
Sheet # **1**  
Proposed **STORM X-ING**  
Date **OCTOBER 21, 2005**

B.M. 1 Elev. = **248.303M**  
is **GIVEN**

Description: **(TRAV 2006) TOP OF RR SPIKE FOUND, @ STA. 0+011±, SIX POINTS RD.**

B.M. 2 Elev. = **249.784M**  
is **CALCULATED**

Description: **CHIS "X" SET TOP BONNET BOLT OF F.H., 7M± LT OF STA. 0+105±, SIX POINTS RD.**

Benchmarks check **BY 0.003M**  
Elevations are referenced to **B.M.#1**

SO-DEEP will attempt to use the BM/HI most applicable to your design. If however, BMs differ by more than .05', resulting differences could cause design conflicts.

Recorded Size/Type of utility **WAS FOUND**

Existing Grade of **GRASS R/W**

There **WERE NOT** additional utilities in the test hole

The utility **WAS** in good condition.

Paving Thickness and type **NO PAVE**

Color of ribbon installed **BLUE**

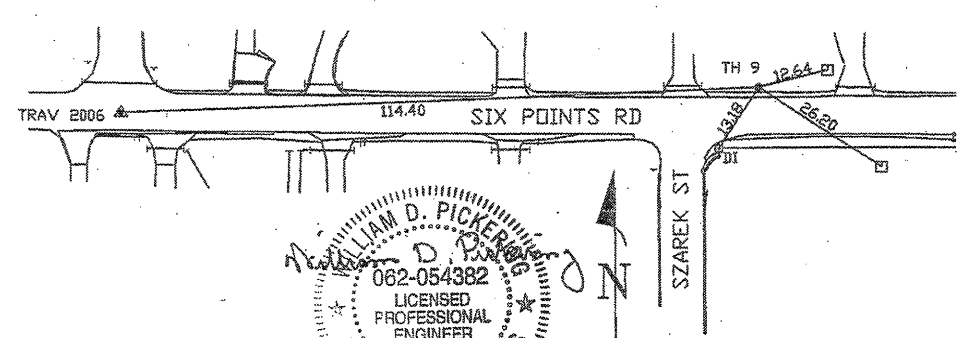
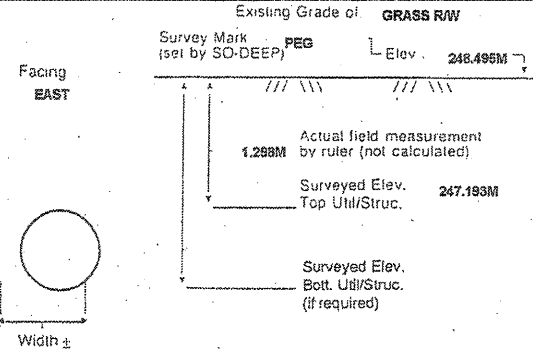
Soil Type **DRY, HARD**

Field Condition **GRASS R/W**

T.H. tied to **PEG**

**229MM C.I. WATER LINE**  
Size/Material/Type  
Portion of pipe exposed for O.D. measurement:  
**FULL**

Remarks: **NONE**



- R/W = Rights of Way
- N.T.S. = Not to Scale
- \* = Not Shown on Plan
- PCC = Precast Concrete
- COND. = Conduit
- CONC. = Concrete
- O.D. = Outside Diameter
- C.I. = Cast Iron
- D.I. = Ductile Iron
- RPC = Rough Pour Concrete
- CL = Centerline
- T.C. = Terra Cotta
- PLAS. = Plastic
- BL = Base Line
- ELEC. = Electric
- TELE = Telephone
- T.H. = Test Hole
- SW = Sidewalk
- DW = Driveway
- BM = Benchmark
- C.B. = Catch Basin
- GV = Gas Valve

**Performing out-of-sight work...with vision!**  
All values are shown in meters (m) or millimeters (mm).  
To convert to feet multiply meters by 3.2808.  
Note: To eliminate mistakes and check this work, So-Deep suggests you scale and plot all dimensions onto the plans and review all elevations carefully. So-Deep is responsible only for information shown on our forms.

- Sewer Manhole
- Test Hole
- ⊕ Fire Hydrant
- Pole
- x-x-x-x- Fence Line
- ⊖ Electric Manhole
- ⊕ T.S. = Traverse Station
- ⊕ Valve
- ⊕ Water Meter
- ⊕ Telephone Manhole
- ⊕ Telephone Pedestal

**SO-DEEP Inc.**  
The Subsurface Utility Engineering Company  
8397 Euclid Avenue  
Manassas Park, VA 20111  
(703) 361-6005

### So-Deep Test Hole Certification Form - Metric

© So-Deep, Inc. 1988, 1994

City, County, State **MCLEAN CO., IL**  
Gen. Loc. **INT. OF SIX POINTS & SZAREK RDS.**  
Recorded Size/Material/Type **102MM STEEL GAS LINE**  
Foreman/Truck#/Form By **J. HARLIN /221 /M. LOSE**

Condition of paving prior to work  
**NO PAVING**

Control # **SILA093**  
Test Hole # **10**  
Plan Scale **1:250**  
Sheet # **1**  
Proposed **STORM X-ING**  
Date **OCTOBER 21, 2005**

B.M. 1 Elev. = **248.303M**  
is **GIVEN**

Description: **(TRAV 2006) TOP OF RR SPIKE FOUND, @ STA. 0+011±, SIX POINTS RD.**

B.M. 2 Elev. = **249.784M**  
is **CALCULATED**

Description: **CHIS "X" SET TOP BONNET BOLT OF F.H., 7M± LT OF STA. 0+105±, SIX POINTS RD.**

Benchmarks check **BY 0.003M**  
Elevations are referenced to **B.M.#1**

SO-DEEP will attempt to use the BM/HI most applicable to your design. If however, BMs differ by more than .05', resulting differences could cause design conflicts.

Recorded Size/Type of utility **WAS FOUND**

Existing Grade of **GRASS R/W**

There **WERE NOT** additional utilities in the test hole

The utility **WAS** in good condition.

Paving Thickness and type **NO PAVE**

Color of ribbon installed **YELLOW**

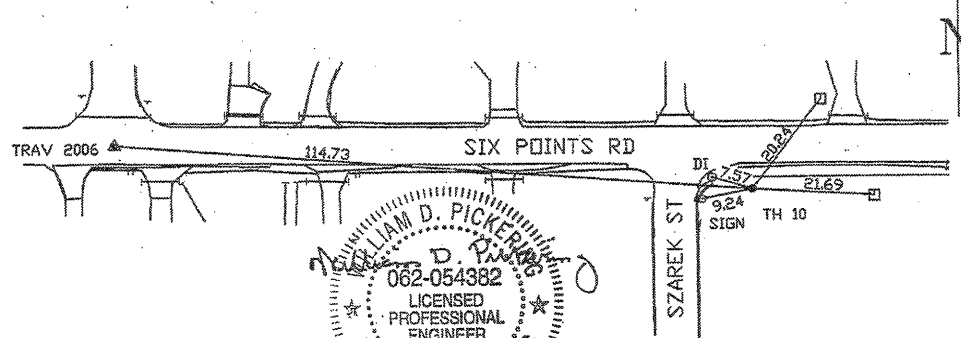
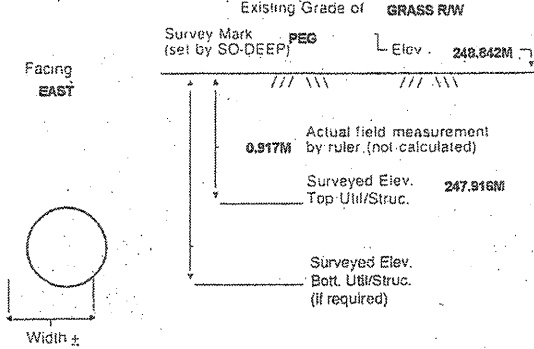
Soil Type **MOIST, CLAY**

Field Condition **GRASS R/W**

T.H. tied to **PEG**

**115MM WRAPPED STEEL GAS LINE**  
Size/Material/Type  
Portion of pipe exposed for O.D. measurement:  
**FULL**

Remarks: **NONE**



- R/W = Rights of Way
- N.T.S. = Not to Scale
- \* = Not Shown on Plan
- PCC = Precast Concrete
- COND. = Conduit
- CONC. = Concrete
- O.D. = Outside Diameter
- C.I. = Cast Iron
- D.I. = Ductile Iron
- RPC = Rough Pour Concrete
- CL = Centerline
- T.C. = Terra Cotta
- PLAS. = Plastic
- BL = Base Line
- ELEC. = Electric
- TELE = Telephone
- T.H. = Test Hole
- SW = Sidewalk
- DW = Driveway
- BM = Benchmark
- C.B. = Catch Basin
- GV = Gas Valve

**Performing out-of-sight work...with vision!**  
All values are shown in meters (m) or millimeters (mm).  
To convert to feet multiply meters by 3.2808.  
Note: To eliminate mistakes and check this work, So-Deep suggests you scale and plot all dimensions onto the plans and review all elevations carefully. So-Deep is responsible only for information shown on our forms.

- Sewer Manhole
- Test Hole
- ⊕ Fire Hydrant
- Pole
- x-x-x-x- Fence Line
- ⊖ Electric Manhole
- ⊕ T.S. = Traverse Station
- ⊕ Valve
- ⊕ Water Meter
- ⊕ Telephone Manhole
- ⊕ Telephone Pedestal

REVISIONS	
NAME	DATE

ILLINOIS DEPARTMENT OF TRANSPORTATION  
  
SUBSURFACE UTILITY ENGINEERING DETAILS  
SHEET 5 OF 11  
  
DRAWN BY **SAM**  
CHECKED BY **PMH**  
DATE **5/27/09**