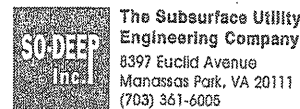


F.A.P. RTE.	SECTION	COUNTY	TOTAL SHEETS NO.	SHEET NO.
704	(1)N & TS-1	MCLEAN	497	198
STA. N/A		TO STA. N/A		
FED. ROAD DIST. NO.		ILLINOIS FED. AID PROJECT		
CONTRACT NO. 70514				



The Subsurface Utility Engineering Company  
8397 Euclid Avenue  
Manassas Park, VA 20111  
(703) 361-6005

### So-Deep Test Hole Certification Form - Metric

© So-Deep, Inc. 1988, 1994

City, County, State **MCLEAN CO., IL**  
Gen. Loc. **N.W. CORNER OF MORRIS & SIX POINTS INT.**  
Recorded Size/Material/Type **457MM STEEL CASING PIPE**  
Foreman/Truck#/Form By **J. HARLIN /221 /M. LOSE**

Condition of paving prior to work  
**NO PAVING**

Control # **SILA093**  
Test Hole # **13**  
Plan Scale **1:250**  
Sheet # **3**  
Proposed **GRADE CHANGE**  
Date **OCTOBER 24, 2005**

B.M. 1 Elev. = **251.463M**  
is **GIVEN**  
Description: **(TRAV 2000) TOP OF RR SPIKE FOUND; 20.40M ± RIGHT OF STATION 0+402.60±, S. MORRIS AVE.**

B.M. 2 Elev. = **250.851M**  
is **CALCULATED**  
Description: **CHIS. "X" SET TOP RIM SSMH; 14.0M± LEFT OF STATION 0+418.20±, S. MORRIS AVE.**

Benchmarks check **BY 0.003M**  
Elevations are referenced to **B.M.#2**

SO-DEEP will attempt to use the BM/HI most applicable to your design. If however, BMs differ by more than .05, resulting differences could cause design conflicts.

Recorded Size/Type of utility **WAS FOUND**

There **WERE NOT** additional utilities in the test hole

The utility **WAS** in good condition.

Paving Thickness and type **NO PAVE**

Color of ribbon installed **ORANGE**

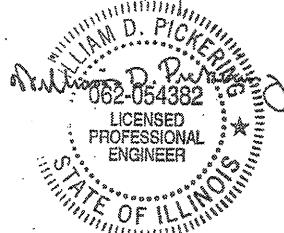
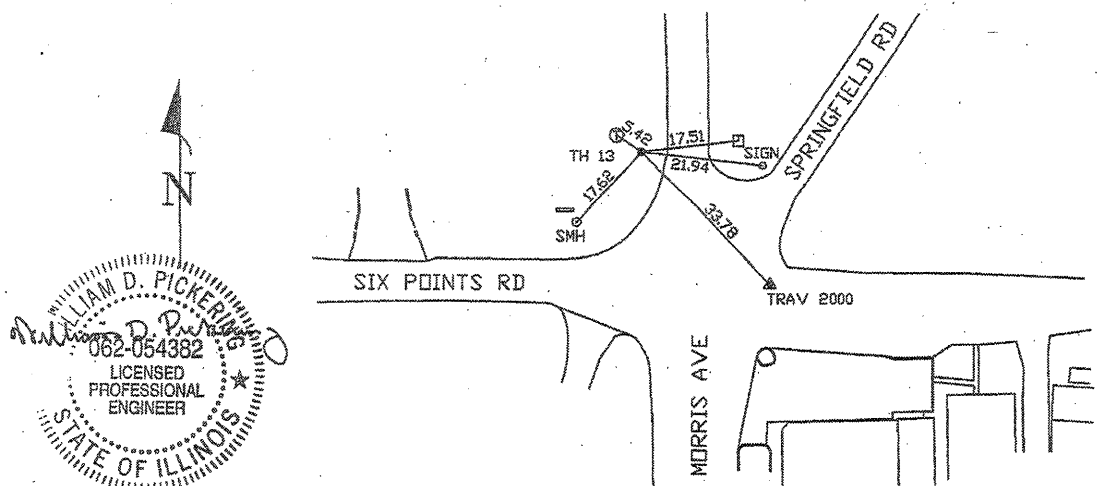
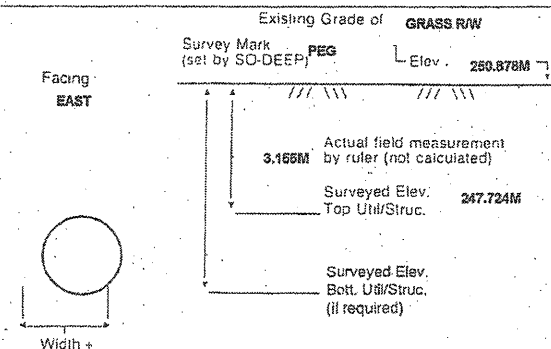
Soil Type **WET, MUD**

Field Condition **GRASS R/W**

T.H. tied to **PEG**

\*457MM STEEL CASING PIPE  
Size/Material/Type  
Portion of pipe exposed for O.D. measurement:  
**OTHER, (SEE REMARKS)**

Remarks: \* THE CREW WAS UNABLE TO OBTAIN AN ACCURATE O.D. MEASUREMENT DUE TO COPIOUS AMOUNTS OF WATER & UNSTABLE GROUND CONDITIONS. TOP SIDE SURVEY, ELECTRONIC DESIGNATING & UTILITY RECORDS RESEARCH ALL INDICATE THE TEST HOLE WAS DUG ON THE CORRECT UTILITY.



- R/W = Rights of Way
- N.T.S. = Not to Scale
- \* = Not Shown on Plan
- PCC = Precast Concrete
- COND. = Conduit
- CONC. = Concrete
- O.D. = Outside Diameter
- C.I. = Cast Iron
- D.I. = Ductile Iron
- RPC = Rough Four Concrete
- CL = Centerline
- T.C. = Terra Cotta
- PLAS. = Plastic
- BL. = Base Line
- ELEC. = Electric
- TELE. = Telephone
- T.H. = Test Hole
- SW = Sidewalk
- DW = Driveway
- SM = Benchmark
- C.B. = Catch Basin
- GV = Gas Valve

Performing out-of-sight work... with vision!<sup>SM</sup>  
All values are shown in meters (m) or millimeters (mm).  
To convert to feet multiply meters by 3.2808.  
Note: To eliminate mistakes and check this work, So-Deep suggests you scale and plot all dimensions onto the plans and review all elevations carefully. So-Deep is responsible only for information shown on our forms.

- Sewer Manhole
- Test Hole
- Fire Hydrant
- Electric Manhole
- △ T.S. = Traverse Station
- ⊗ Valve
- ⊕ Water Meter
- ⊙ Telephone Manhole
- ⊞ Telephone Pedestal



The Subsurface Utility Engineering Company  
8397 Euclid Avenue  
Manassas Park, VA 20111  
(703) 361-6005

### So-Deep Test Hole Certification Form - Metric

© So-Deep, Inc. 1988, 1994

City, County, State **MCLEAN CO., IL**  
Gen. Loc. **N. CORNER OF MORRIS AVE. & SPRINGFIELD RD.**  
Recorded Size/Material/Type **306MM UNK. TYPE WATER LINE**  
Foreman/Truck#/Form By **J. HARLIN /221 /M. LOSE**

Condition of paving prior to work  
**ASPHALT IN GOOD COND.**

Control # **SILA093**  
Test Hole # **14**  
Plan Scale **1:250**  
Sheet # **3**  
Proposed **STORM X-ING**  
Date **OCTOBER 19, 2005**

B.M. 1 Elev. = **251.463M**  
is **GIVEN**  
Description: **(TRAV 2000) TOP OF RR SPIKE FOUND; 20.40M ± RIGHT OF STATION 0+402.60±, S. MORRIS AVE.**

B.M. 2 Elev. = **250.851M**  
is **CALCULATED**  
Description: **CHIS. "X" SET TOP RIM SSMH; 14.0M± LEFT OF STATION 0+418.20±, S. MORRIS AVE.**

Benchmarks check **BY 0.003M**  
Elevations are referenced to **B.M.#2**

SO-DEEP will attempt to use the BM/HI most applicable to your design. If however, BMs differ by more than .05, resulting differences could cause design conflicts.

Recorded Size/Type of utility **WAS FOUND**

There **WERE NOT** additional utilities in the test hole

The utility **WAS** in good condition.

Paving Thickness and type **76MM**

Color of ribbon installed **BLUE**

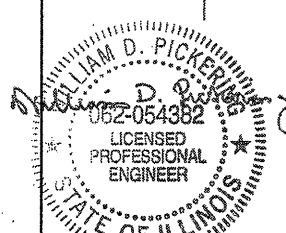
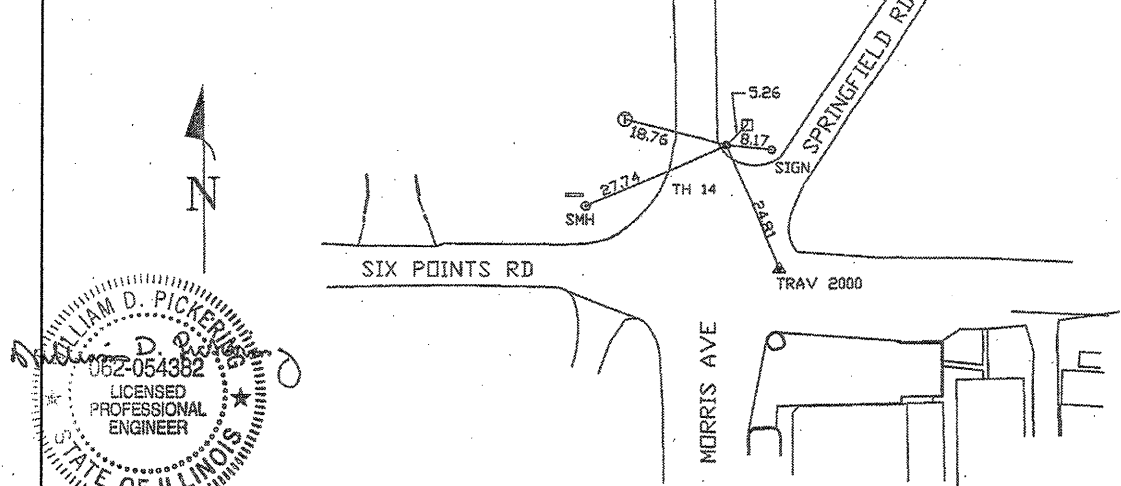
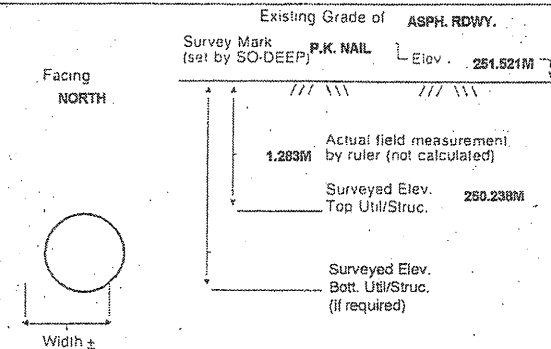
Soil Type **MOIST, SANDY SOIL**

Field Condition **LIGHT RD. TRAFFIC**

T.H. tied to **P.K. NAIL**

\*306MM CORRODED METALLIC WATER LINE  
Size/Material/Type  
Portion of pipe exposed for O.D. measurement:  
**FULL**

Remarks: \* THE CREW FOUND THE 306MM UNK. TYPE WATER LINE HEAVILY CORRODED @ THIS LOCATION.



- R/W = Rights of Way
- N.T.S. = Not to Scale
- \* = Not Shown on Plan
- PCC = Precast Concrete
- COND. = Conduit
- CONC. = Concrete
- O.D. = Outside Diameter
- C.I. = Cast Iron
- D.I. = Ductile Iron
- RPC = Rough Four Concrete
- CL = Centerline
- T.C. = Terra Cotta
- PLAS. = Plastic
- BL. = Base Line
- ELEC. = Electric
- TELE. = Telephone
- T.H. = Test Hole
- SW = Sidewalk
- DW = Driveway
- SM = Benchmark
- C.B. = Catch Basin
- GV = Gas Valve

Performing out-of-sight work... with vision!<sup>SM</sup>  
All values are shown in meters (m) or millimeters (mm).  
To convert to feet multiply meters by 3.2808.  
Note: To eliminate mistakes and check this work, So-Deep suggests you scale and plot all dimensions onto the plans and review all elevations carefully. So-Deep is responsible only for information shown on our forms.

- Sewer Manhole
- Test Hole
- Fire Hydrant
- Electric Manhole
- △ T.S. = Traverse Station
- ⊗ Valve
- ⊕ Water Meter
- ⊙ Telephone Manhole
- ⊞ Telephone Pedestal

REVISIONS	
NAME	DATE

ILLINOIS DEPARTMENT OF TRANSPORTATION  
  
SUBSURFACE UTILITY ENGINEERING DETAILS  
SHEET 7 OF 11  
  
DRAWN BY **SAM**  
CHECKED BY **PMH**  
DATE **5/27/09**