

F.A.P. RTE.	SECTION	COUNTY	TOTAL SHEETS	SHEET NO.
704	11N & TS-1	McLEAN	497	200
STA. N/A		TO STA. N/A		
FED. ROAD DIST. NO.		ILLINOIS FED. AID PROJECT		
CONTRACT NO. 70514				

**SO-DEEP Inc.**  
 The Subsurface Utility Engineering Company  
 8397 Euclid Avenue  
 Manassas Park, VA 20111  
 (703) 361-6005

### So-Deep Test Hole Certification Form - Metric

© So-Deep, Inc. 1988, 1994

Control # **SILA093**  
 Test Hole # **17**  
 Plan Scale **1:250**  
 Sheet # **3**  
 Proposed Date **STORM X-ING OCTOBER 19, 2005**

City, County, State **MCLEAN CO., IL**  
 Gen. Loc. **W. OF INT., MORRIS AVE. & SIX POINTS RD.**  
 Recorded Size/Material/Type **1 UNK. SIZE TELE. CABLE**  
 Foreman/Truck#/Form By **J. HARLIN /221 /M. LOSE**

Condition of paving prior to work  
**ASPHALT IN GOOD COND.**

B.M. 1 Elev. = **251.483M**  
 is **GIVEN**  
 Description: **(TRAV 2000) TOP OF RR SPIKE FOUND; 20.40M ± RIGHT OF STATION 0+402.60±, S. MORRIS AVE.**

B.M. 2 Elev. = **250.851M**  
 is **CALCULATED**  
 Description: **CHIS. "X" SET TOP RIM SSMH; 14.0M± LEFT OF STATION 0+418.20±, S. MORRIS AVE.**

SO-DEEP will attempt to use the BM#1 most applicable to your design. If however, BMs differ by more than .05', resulting differences could cause design conflicts.

Benchmarks check **BY 0.003M**  
 Elevations are referenced to **B.M.#2**

Recorded Size/Type of utility **WAS FOUND**

There **WERE NOT** additional utilities in the test hole

The utility **WAS** in good condition.

Paving Thickness and type **203MM ASPH.**

Color of ribbon installed **ORANGE**

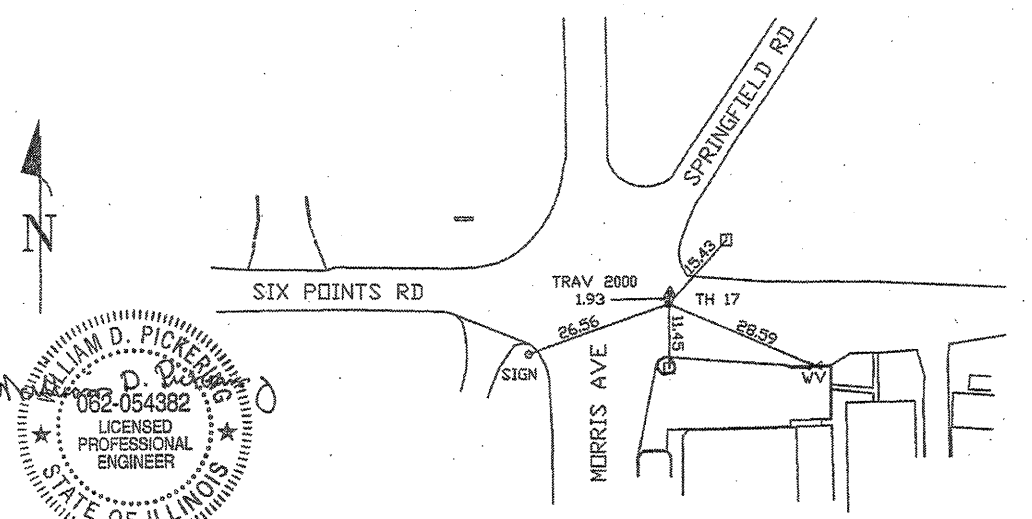
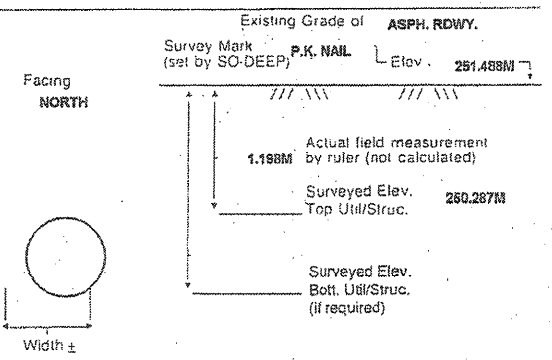
Soil Type **DRY, HARD CLAY**

Field Condition: **LIGHT RD. TRAFFIC**

T.H. tied to **P.K. NAIL**

(1) **64MM TELE. CABLE**  
 Size/Material/Type  
 Portion of pipe exposed for O.D. measurement:  
**FULL**

Remarks: **NONE**



**WILLIAM D. PICKERING**  
 082-054382  
 LICENSED PROFESSIONAL ENGINEER  
 STATE OF ILLINOIS

- RAW = Rights of Way
- N.T.S. = Not to Scale
- \* = Not Shown on Plan
- PCC = Precast Concrete
- COND. = Conduit
- COND. = Concrete
- O.D. = Outside Diameter
- C.I. = Cast Iron
- D.I. = Ductile Iron
- RPC = Rough Pour Concrete
- CL = Centerline
- T.C. = Terra Cotta
- PLAS. = Plastic
- BL = Base Line
- ELEC. = Electric
- TELE = Telephone
- T.H. = Test Hole
- SW = Sidewalk
- DW = Driveway
- BM = Benchmark
- C.B. = Catch Basin
- GV = Gas Valve
- Sewer Manhole
- Test Hole
- Fire Hydrant
- Pole
- Fence Line
- Electric Manhole
- T.S. = Traverse Station
- Water Meter
- Telephone Manhole
- Telephone Pedestal

*Performing out-of-sight work...with vision!*  
 All values are shown in meters (m) or millimeters (mm).  
 Note: To eliminate mistakes and check this work, So-Deep suggests you scale and plot all dimensions onto the plans and review all elevations carefully. So-Deep is responsible only for information shown on our forms.

**SO-DEEP Inc.**  
 The Subsurface Utility Engineering Company  
 8397 Euclid Avenue  
 Manassas Park, VA 20111  
 (703) 361-6005

### So-Deep Test Hole Certification Form - Metric

© So-Deep, Inc. 1988, 1994

Control # **SILA093**  
 Test Hole # **18**  
 Plan Scale **1:250**  
 Sheet # **3**  
 Proposed Date **STORM X-ING OCTOBER 19, 2005**

City, County, State **MCLEAN CO., IL**  
 Gen. Loc. **MORRIS AVE., S. OF SIX POINTS RD.**  
 Recorded Size/Material/Type **(3) 102MM PLASTIC TELE. CONDUITS**  
 Foreman/Truck#/Form By **J. HARLIN /221 /M. LOSE**

Condition of paving prior to work  
**NO PAVING**

B.M. 1 Elev. = **251.483M**  
 is **GIVEN**  
 Description: **(TRAV 2000) TOP OF RR SPIKE FOUND; 20.40M ± RIGHT OF STATION 0+402.60±, S. MORRIS AVE.**

B.M. 2 Elev. = **250.851M**  
 is **CALCULATED**  
 Description: **CHIS. "X" SET TOP RIM SSMH; 14.0M± LEFT OF STATION 0+418.20±, S. MORRIS AVE.**

SO-DEEP will attempt to use the BM#1 most applicable to your design. If however, BMs differ by more than .05', resulting differences could cause design conflicts.

Benchmarks check **BY 0.003M**  
 Elevations are referenced to **B.M.#2**

Recorded Size/Type of utility **WAS FOUND**

There **WERE** additional utilities in the test hole

The utility **WAS** in good condition.

Paving Thickness and type **NO PAVE**

Color of ribbon installed **ORANGE**

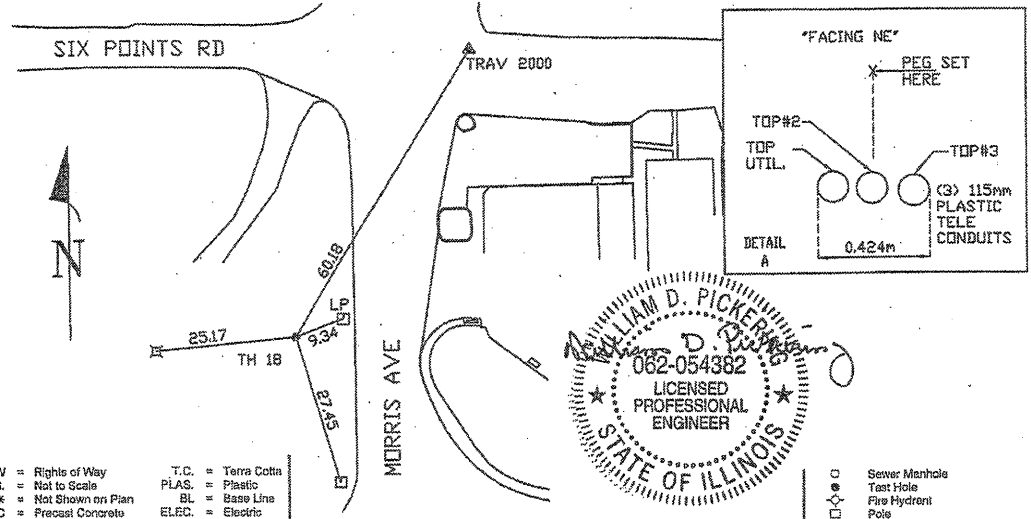
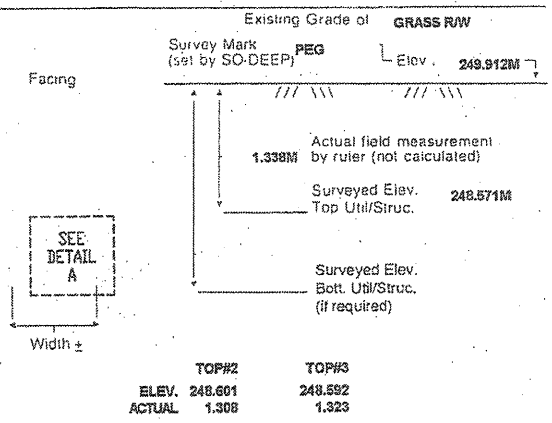
Soil Type **DRY, HARD CLAY**

Field Condition: **GRASS RW**

T.H. tied to **PEG**

(3) **115MM PLA. TELE CONDUITS**  
 Size/Material/Type  
 Portion of pipe exposed for O.D. measurement:  
**N/A**

Remarks: **NONE**



**WILLIAM D. PICKERING**  
 082-054382  
 LICENSED PROFESSIONAL ENGINEER  
 STATE OF ILLINOIS

- RAW = Rights of Way
- N.T.S. = Not to Scale
- \* = Not Shown on Plan
- PCC = Precast Concrete
- COND. = Conduit
- COND. = Concrete
- O.D. = Outside Diameter
- C.I. = Cast Iron
- D.I. = Ductile Iron
- RPC = Rough Pour Concrete
- CL = Centerline
- T.C. = Terra Cotta
- PLAS. = Plastic
- BL = Base Line
- ELEC. = Electric
- TELE = Telephone
- T.H. = Test Hole
- SW = Sidewalk
- DW = Driveway
- BM = Benchmark
- C.B. = Catch Basin
- GV = Gas Valve
- Sewer Manhole
- Test Hole
- Fire Hydrant
- Pole
- Fence Line
- Electric Manhole
- T.S. = Traverse Station
- Water Meter
- Telephone Manhole
- Telephone Pedestal

*Performing out-of-sight work...with vision!*  
 All values are shown in meters (m) or millimeters (mm).  
 Note: To eliminate mistakes and check this work, So-Deep suggests you scale and plot all dimensions onto the plans and review all elevations carefully. So-Deep is responsible only for information shown on our forms.

REVISIONS	
NAME	DATE

ILLINOIS DEPARTMENT OF TRANSPORTATION

SUBSURFACE UTILITY ENGINEERING DETAILS  
 SHEET 9 OF 11

DRAWN BY **SAM**  
 CHECKED BY **PMH**

DATE **5/27/09**