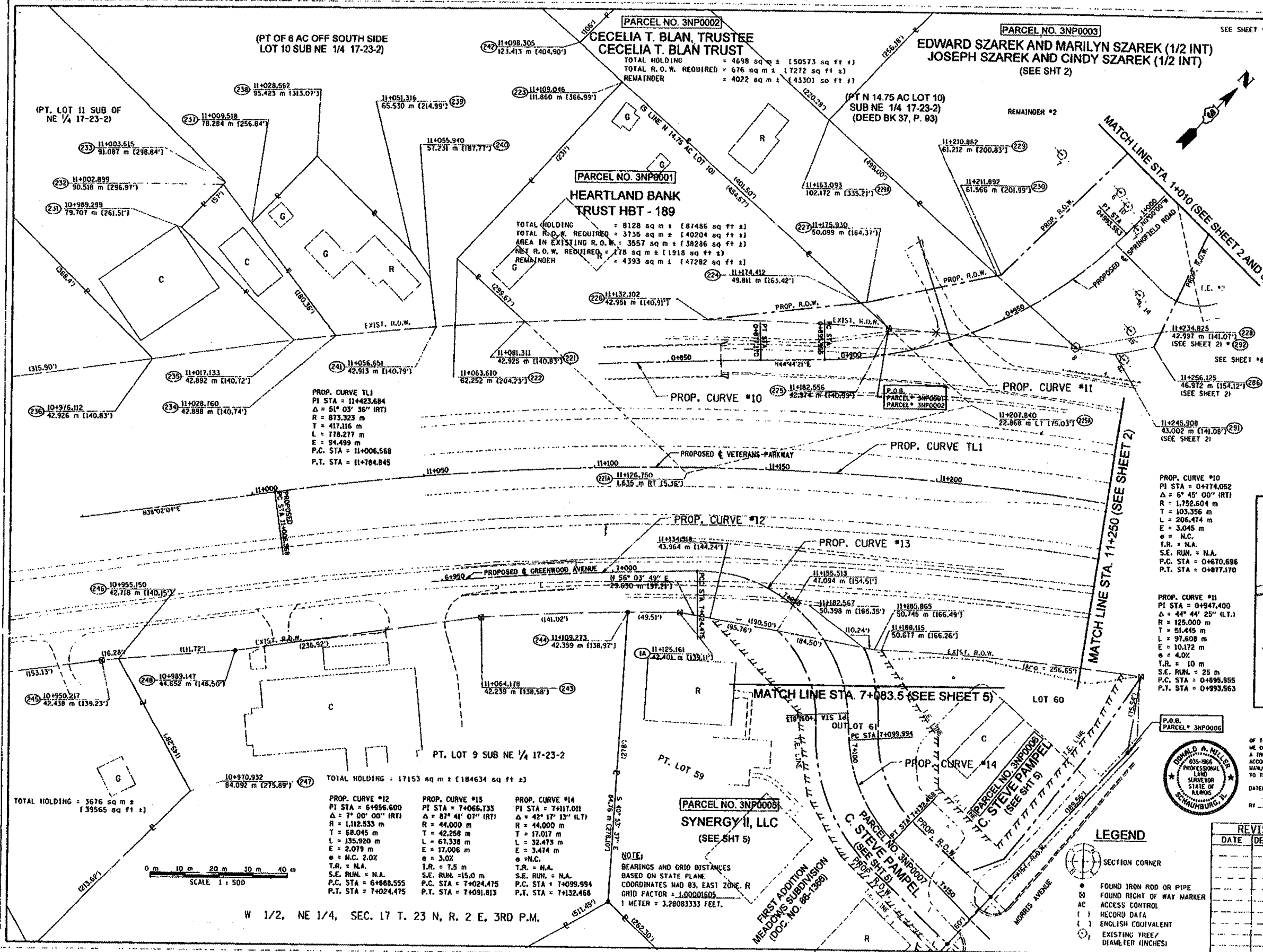
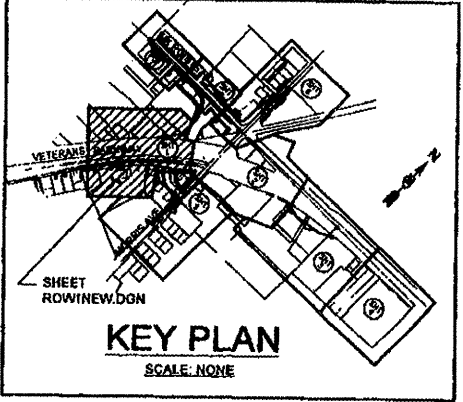


RECORDED AS DOCUMENT NO.



119	230	S 01° 09' 45" W	52.945 m (173.70')
120	229	S 88° 11' 52" W	26.938 m (88.38')
121	228	N 88° 11' 52" E	64.400 m (211.29')
122	227	N 01° 31' 16" W	70.394 m (230.95')
123	226	N 87° 52' 26" E	94.565 m (310.25')
124	225	S 87° 52' 26" W	16.793 m (55.10')
125	224	N 87° 52' 26" E	10.968 m (35.99')
126	223	S 38° 54' 24" W	45.077 m (147.89')
127	222	N 38° 55' 43" E	1.631 m (5.35')
128	221	N 87° 52' 26" E	32.970 m (108.17')
129	220	N 33° 38' 33" E	38.179 m (125.25')
130	219	S 87° 52' 23" W	31.250 m (102.53')
131	218	N 33° 40' 35" E	1.160 m (3.81')
132	217	S 87° 52' 23" W	66.480 m (218.11')
133	216	N 00° 26' 53" W	17.374 m (57.00')
134	215	S 89° 30' 56" E	46.520 m (152.62')
135	214	N 00° 26' 53" W	0.914 m (3.00')
136	213	S 81° 19' 08" E	14.042 m (46.07')
137	212	N 81° 19' 08" W	40.932 m (134.29')
138	211	N 00° 26' 53" W	27.057 m (88.77')
139	210	S 89° 30' 56" E	38.871 m (127.53')
140	209	S 19° 41' 02" E	9.662 m (31.70')
141	208	S 51° 42' 41" E	14.338 m (47.04')
142	207	S 37° 33' 15" W	12.207 m (39.90')
143	206	N 41° 17' 20" E	4.941 m (16.21')
144	205	S 72° 50' 43" E	44.281 m (145.28')
145	204	N 41° 17' 20" E	34.052 m (111.72')
146	203	N 31° 58' 00" E	85.615 m (280.89')
147	202	S 00° 54' 06" E	78.083 m (256.18')
148	201	N 44° 34' 35" E	Lo = 53.280 m (174.80')
149	200	Rc = 915.862 m (3004.79')	Arc = 53.280 m (174.80')
150	199	S 49° 06' 03" E	Lo = 25.811 m (84.88')
151	198	Rc = 915.862 m (3004.79')	Arc = 25.811 m (84.88')
152	197	S 47° 54' 01" W	Lo = 52.932 m (173.65')
153	196	Rc = 915.862 m (3004.79')	Arc = 52.932 m (173.65')
154	195	N 51° 16' 15" E	Lo = 54.834 m (179.90')
155	194	Rc = 915.862 m (3004.79')	Arc = 54.834 m (179.90')
156	193	S 39° 04' 46" W	Lo = 12.198 m (40.02')
157	192	Rc = 915.862 m (3004.79')	Arc = 12.198 m (40.02')
158	191	N 40° 22' 35" E	Lo = 29.261 m (96.00')
159	190	Rc = 915.862 m (3004.79')	Arc = 29.261 m (96.00')
160	189	S 38° 21' 11" W	Lo = 10.918 m (35.82')
161	188	Rc = 915.862 m (3004.79')	Arc = 10.918 m (35.82')
162	187	N 43° 58' 28" E	Lo = 58.016 m (190.34')
163	186	Rc = 830.518 m (2724.79')	Arc = 58.016 m (190.38')



SURVEYOR'S STATEMENT

I, DONALD A. MILLER, HEREBY STATE THAT I AM A PROFESSIONAL LAND SURVEYOR OF THE STATE OF ILLINOIS; THAT THE SURVEY OF PROPOSED FAP ROUTE TOA WAS MADE BY ME OR UNDER MY DIRECT SUPERVISION; THAT THE LAND CORNER TIES AS SHOWN HEREON, ARE A TRUE AND CORRECT REPRESENTATION OF SAID SURVEY AND THAT THE PLAT HEREON IS IN ACCORDANCE WITH APPLICABLE SECTIONS OF THE LAND ACQUISITION POLICIES AND PROCEDURES MANUAL OF THE DEPARTMENT'S DISTRICT POLICIES. THIS PROFESSIONAL SERVICE CONFORMS TO THE CURRENT ILLINOIS MINIMUM STANDARDS FOR A BOUNDARY SURVEY.

DATED MAY 10, 2007

BY: *Donald A. Miller*
DONALD A. MILLER ILLINOIS PROFESSIONAL LAND SURVEYOR NO. 035-1966
LICENSE EXPIRES DATE 11-30-08

REVISION	
DATE	DESCRIPTION

ILLINOIS DEPT. OF TRANSPORTATION
RIGHT OF WAY PLANS

ROUTE FAP 704 (I-55 BL - VETERANS PARKWAY)
SECTION (1) N & TS-1
PROJECT
COUNTY McLEAN
JOB NUMBER R-93-005-98
STATION 10+950 TO 11+250
SCALE 1:500 SHEET 1 OF 8

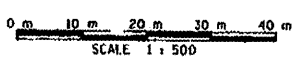


LEGEND

- SECTION CORNER
- FOUND IRON ROD OR PIPE
- FOUND RIGHT OF WAY MARKER
- ACCESS CONTROL
- RECORD DATA
- ENGLISH EQUIVALENT
- EXISTING TREE/ DIAMETER (INCHES)

PROP. CURVE #12 PI STA = 6+956.600 Δ = 7° 00' 00" (RT) R = 1,112.533 m T = 68.045 m L = 135.920 m E = 2.079 m e = N.C. 2.0% T.R. = N.A. S.E. RUN = N.A. P.C. STA = 6+888.555 P.T. STA = 7+024.475	PROP. CURVE #13 PI STA = 7+066.733 Δ = 87° 41' 07" (RT) R = 44,000 m T = 42,298 m L = 67,338 m E = 17,008 m e = 3.0% T.R. = 7.5 m S.E. RUN = 15.0 m P.C. STA = 7+024.475 P.T. STA = 7+091.813	PROP. CURVE #14 PI STA = 7+117.011 Δ = 42° 17' 13" (LT) R = 44,000 m T = 17,017 m L = 32,473 m E = 3,474 m e = N.C. T.R. = N.A. S.E. RUN = N.A. P.C. STA = 7+099.994 P.T. STA = 7+132.468
---	---	---

NOTE:
BEARINGS AND GRID DISTANCES
BASED ON STATE PLANE
COORDINATES NAD 83, EAST ZONE. R
GRID FACTOR = 1.00001605
1 METER = 3.28083333 FEET.



W 1/2, NE 1/4, SEC. 17 T. 23 N, R. 2 E, 3RD P.M.