

SE 1/4 SEC. 8 T. 23 N, R. 2 E, 3RD P.M.

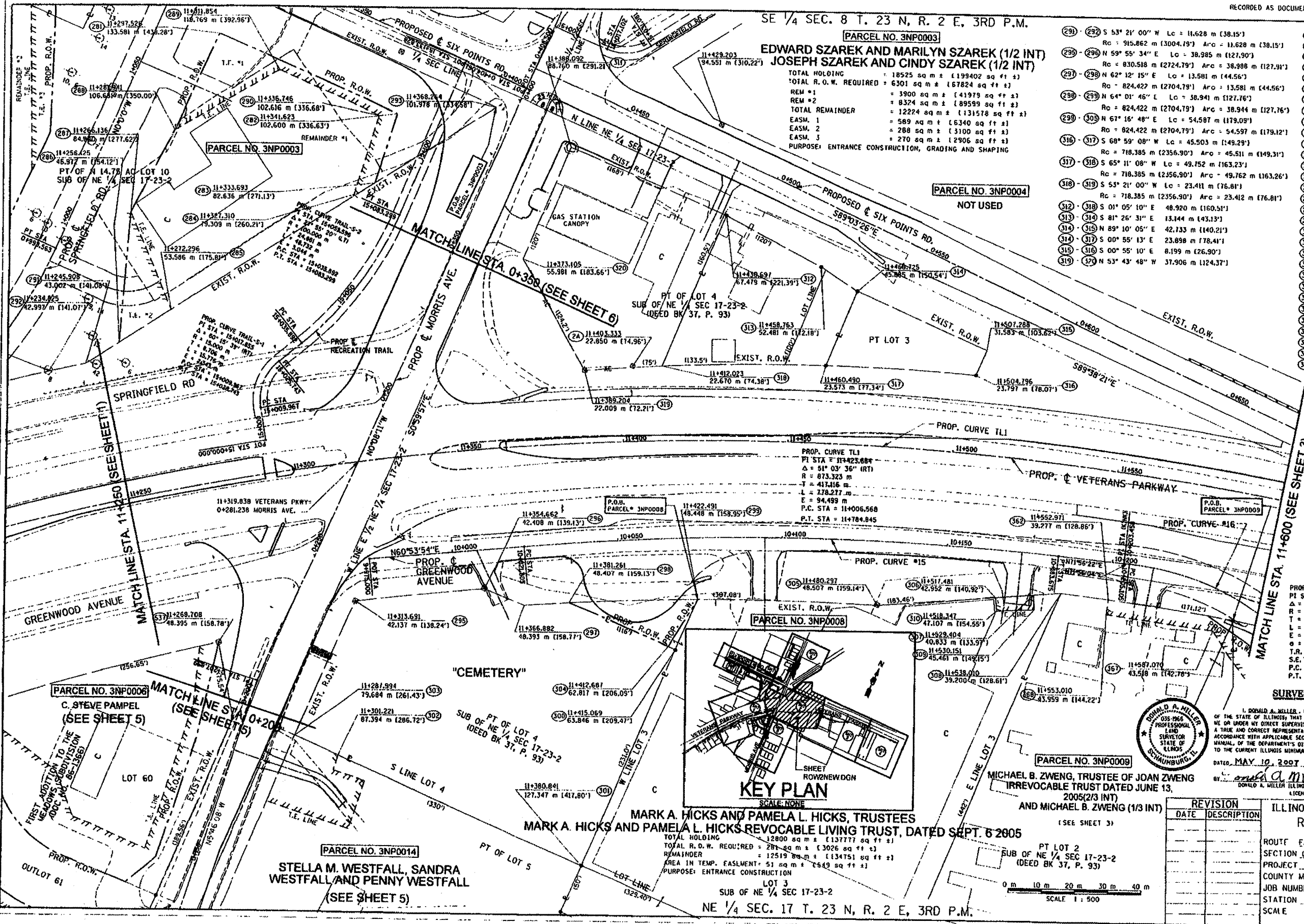
EDWARD SZAREK AND MARILYN SZAREK (1/2 INT)  
JOSEPH SZAREK AND CINDY SZAREK (1/2 INT)

TOTAL HOLDING = 18525 sq m ± (199402 sq ft ±)  
TOTAL R.O.W. REQUIRED = 6301 sq m ± (67824 sq ft ±)  
REM #1 = 3900 sq m ± (41979 sq ft ±)  
REM #2 = 8324 sq m ± (89599 sq ft ±)  
TOTAL REMAINDER = 12224 sq m ± (131578 sq ft ±)  
EASM, 1 = 589 sq m ± (6340 sq ft ±)  
EASM, 2 = 288 sq m ± (3100 sq ft ±)  
EASM, 3 = 270 sq m ± (2905 sq ft ±)  
PURPOSE: ENTRANCE CONSTRUCTION, GRADING AND SHAPING

- (292) S 53° 21' 00" W Lc = 11,628 m (38,15')
- Rc = 915,862 m (3004,79') Arc = 11,628 m (38,15')
- (295) N 59° 55' 34" E Lc = 38,985 m (127,90')
- Rc = 830,518 m (2724,79') Arc = 38,988 m (127,91')
- (297) N 62° 12' 15" E Lc = 13,581 m (44,56')
- Rc = 824,422 m (2704,79') Arc = 13,581 m (44,56')
- (298) N 64° 01' 46" E Lc = 38,941 m (127,76')
- Rc = 824,422 m (2704,79') Arc = 38,944 m (127,76')
- (299) N 61° 16' 48" E Lc = 54,587 m (179,09')
- Rc = 824,422 m (2704,79') Arc = 54,597 m (179,12')
- (316) S 68° 59' 08" W Lc = 45,503 m (149,29')
- Rc = 718,385 m (2356,90') Arc = 45,511 m (149,31')
- (317) S 65° 11' 08" W Lc = 49,752 m (163,23')
- Rc = 718,385 m (2356,90') Arc = 49,762 m (163,26')
- (318) S 53° 21' 00" W Lc = 23,411 m (76,81')
- Rc = 718,385 m (2356,90') Arc = 23,412 m (76,81')
- (312) S 01° 05' 10" E Lc = 48,920 m (160,51')
- (313) S 81° 26' 31" E Lc = 13,144 m (43,13')
- (314) S 89° 10' 05" E Lc = 42,133 m (138,21')
- (317) S 00° 55' 13" E Lc = 23,898 m (78,41')
- (315) S 00° 55' 10" E Lc = 8,199 m (26,90')
- (319) N 53° 43' 48" W Lc = 37,906 m (124,37')

- (281) S 89° 41' 01" E 58,863 m (193,13')
- (281) S 00° 00' 00" W 32,216 m (105,70')
- (286) S 06° 31' 30" E 21,806 m (71,54')
- (283) S 33° 47' 35" W 1,728 m (5,65')
- (283) N 33° 47' 35" E 4,837 m (15,88')
- (284) S 33° 47' 35" W 64,532 m (211,71')
- (284) N 06° 31' 37" W 25,529 m (83,74')
- (285) S 33° 47' 35" W 18,336 m (60,14')
- (285) N 06° 31' 37" W 31,738 m (104,10')
- (285) S 33° 47' 35" W 11,454 m (37,57')
- (285) N 04° 03' 49" E 28,181 m (92,45')
- (288) S 35° 54' 40" E 36,235 m (118,85')
- (288) S 89° 41' 05" E 32,887 m (107,89')
- (295) S 00° 10' 27" E 44,508 m (146,02')
- (295) N 88° 35' 39" E 13,040 m (42,77')
- (298) S 08° 44' 11" E 32,761 m (107,48')
- (299) S 07° 54' 26" W 17,051 m (55,94')
- (300) S 00° 38' 38" E 10,426 m (34,37')
- (300) S 89° 44' 03" W 2,431 m (7,96')
- (301) S 89° 44' 08" W 80,411 m (263,80')
- (302) S 89° 44' 08" W 14,231 m (46,69')
- (302) N 61° 22' 21" E 35,670 m (117,03')
- (302) N 61° 22' 21" E 11,547 m (37,88')
- (308) S 26° 35' 29" E 4,235 m (13,89')
- (301) N 61° 22' 21" E 8,312 m (27,27')
- (307) S 26° 21' 26" E 4,683 m (15,36')
- (309) S 63° 31' 40" W 11,299 m (37,07')
- (311) N 89° 05' 20" E 51,055 m (167,51')
- (311) S 01° 05' 10" E 35,576 m (116,70')
- (312) S 85° 11' 05" E 32,776 m (107,54')

PARCEL NO. 3NP0004  
NOT USED



LEGEND

- SECTION CORNER
- FOUND IRON ROD OR PIPE
- FOUND RIGHT OF WAY MARKER
- ACCESS CONTROL
- RECORD DATA
- ENGLISH EQUIVALENT
- EXISTING TREE / DIAMETER (INCHES)

NOTE:  
BEARINGS AND GRID DISTANCES  
BASED ON STATE PLANE  
COORDINATES NAD 83, EAST ZONE.  
GRID FACTOR = 1.00001605  
1 METER = 3.28083333 FEET.

PROP. CURVE #15  
PI STA = 10+102.992  
Δ = 31° 02' 28" (RT.)  
R = 840,000 m  
T = 81,186 m  
L = 161,870 m  
E = 3,914 m  
o = N.C.  
T.R. = N.A.  
S.E. RUN = N.A.  
P.C. STA = 10+021.805  
P.T. STA = 10+183.675

PROP. CURVE #16  
PI STA = 10+229.362  
Δ = 34° 02' 16" (RT.)  
R = 79,248 m  
T = 24,257 m  
L = 47,079 m  
E = 3,629 m  
o = N.C.  
T.R. = N.A.  
S.E. RUN = N.A.  
P.C. STA = 10+205.105  
P.T. STA = 10+282.184

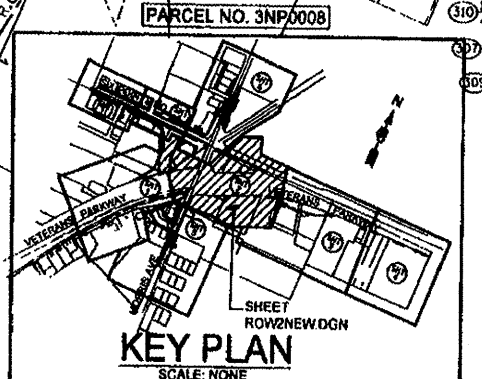
SURVEYOR'S STATEMENT

I, DONALD A. MILLER, HEREBY STATE THAT I AM A PROFESSIONAL LAND SURVEYOR OF THE STATE OF ILLINOIS; THAT THE SURVEY OF PROPOSED FAP ROUTE 704 WAS MADE BY ME OR UNDER MY DIRECT SUPERVISION; THAT THE LAND CORNER TIES AS SHOWN HEREON, ARE A TRUE AND CORRECT REPRESENTATION OF SAID SURVEY; AND THAT THE PLAT HEREON IS IN ACCORDANCE WITH APPLICABLE SECTIONS OF THE LAND ACQUISITION POLICIES AND PROCEDURES MANUAL OF THE DEPARTMENT'S DISTRICT OFFICES. THIS PROFESSIONAL SERVICE CONFORMS TO THE CURRENT ILLINOIS MINIMUM STANDARDS FOR A BOUNDARY SURVEY.

DATE: MAY 10, 2007  
BY: *Donald A. Miller*  
DONALD A. MILLER ILLINOIS PROFESSIONAL LAND SURVEYOR NO. 035-1966  
LICENSE EXPIRES DATE 11-30-08

REVISION	DATE	DESCRIPTION

ILLINOIS DEPT. OF TRANSPORTATION  
RIGHT OF WAY PLANS  
ROUTE FAP 704 I-55 BL. VETERAN'S PARKWAY  
SECTION 11 N. & 15-1  
PROJECT  
COUNTY McLEAN  
JOB NUMBER R-93-005-98  
STATION 11+250 TO 11+600  
SCALE 1:500 SHEET 2 OF 8



MARK A. HICKS AND PAMELA L. HICKS, TRUSTEES  
MARK A. HICKS AND PAMELA L. HICKS REVOCABLE LIVING TRUST, DATED SEPT. 6 2005  
TOTAL HOLDING = 12800 sq m ± (137777 sq ft ±)  
TOTAL R.O.W. REQUIRED = 281 sq m ± (3026 sq ft ±)  
REMAINDER = 12519 sq m ± (134751 sq ft ±)  
AREA IN TEMP. EASEMENT = 51 sq m ± (549 sq ft ±)  
PURPOSE: ENTRANCE CONSTRUCTION

LOT 3  
SUB OF NE 1/4 SEC 17-23-2  
NE 1/4 SEC. 17 T. 23 N, R. 2 E, 3RD P.M.

PARCEL NO. 3NP0006  
C. STEVE PAMPEL  
(SEE SHEET 5)

PARCEL NO. 3NP0014  
STELLA M. WESTFALL, SANDRA WESTFALL AND PENNY WESTFALL  
(SEE SHEET 5)

"CEMETERY"  
SUB OF NE 1/4 SEC 17-23-2  
(DEED BK 37, P. 93)

PARCEL NO. 3NP0009  
MICHAEL B. ZWENG, TRUSTEE OF JOAN ZWENG IRREVOCABLE TRUST DATED JUNE 13, 2005 (2/3 INT)  
AND MICHAEL B. ZWENG (1/3 INT)  
(SEE SHEET 3)

