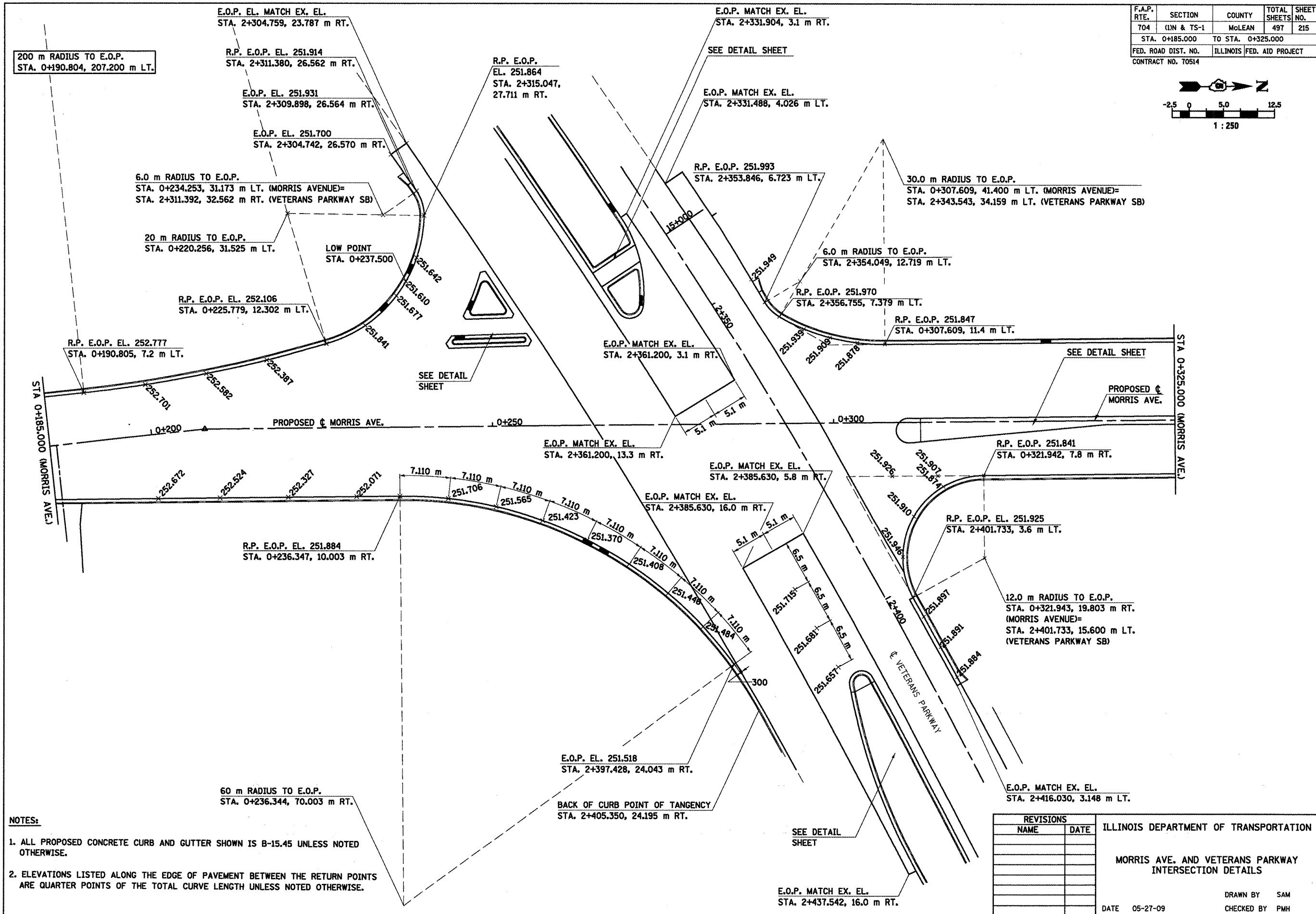
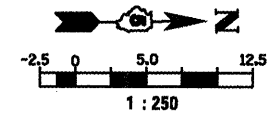


F.A.P. RTE.	SECTION	COUNTY	TOTAL SHEETS	SHEET NO.
704	(DN & TS-1	McLEAN	497	215
STA. 0+185.000		TO STA. 0+325.000		
FED. ROAD DIST. NO.		ILLINOIS	FED. AID PROJECT	
CONTRACT NO. 70514				



- NOTES:**
1. ALL PROPOSED CONCRETE CURB AND GUTTER SHOWN IS B-15.45 UNLESS NOTED OTHERWISE.
 2. ELEVATIONS LISTED ALONG THE EDGE OF PAVEMENT BETWEEN THE RETURN POINTS ARE QUARTER POINTS OF THE TOTAL CURVE LENGTH UNLESS NOTED OTHERWISE.

REVISIONS	
NAME	DATE

ILLINOIS DEPARTMENT OF TRANSPORTATION

MORRIS AVE. AND VETERANS PARKWAY INTERSECTION DETAILS

DRAWN BY SAM
CHECKED BY PMH

DATE 05-27-09