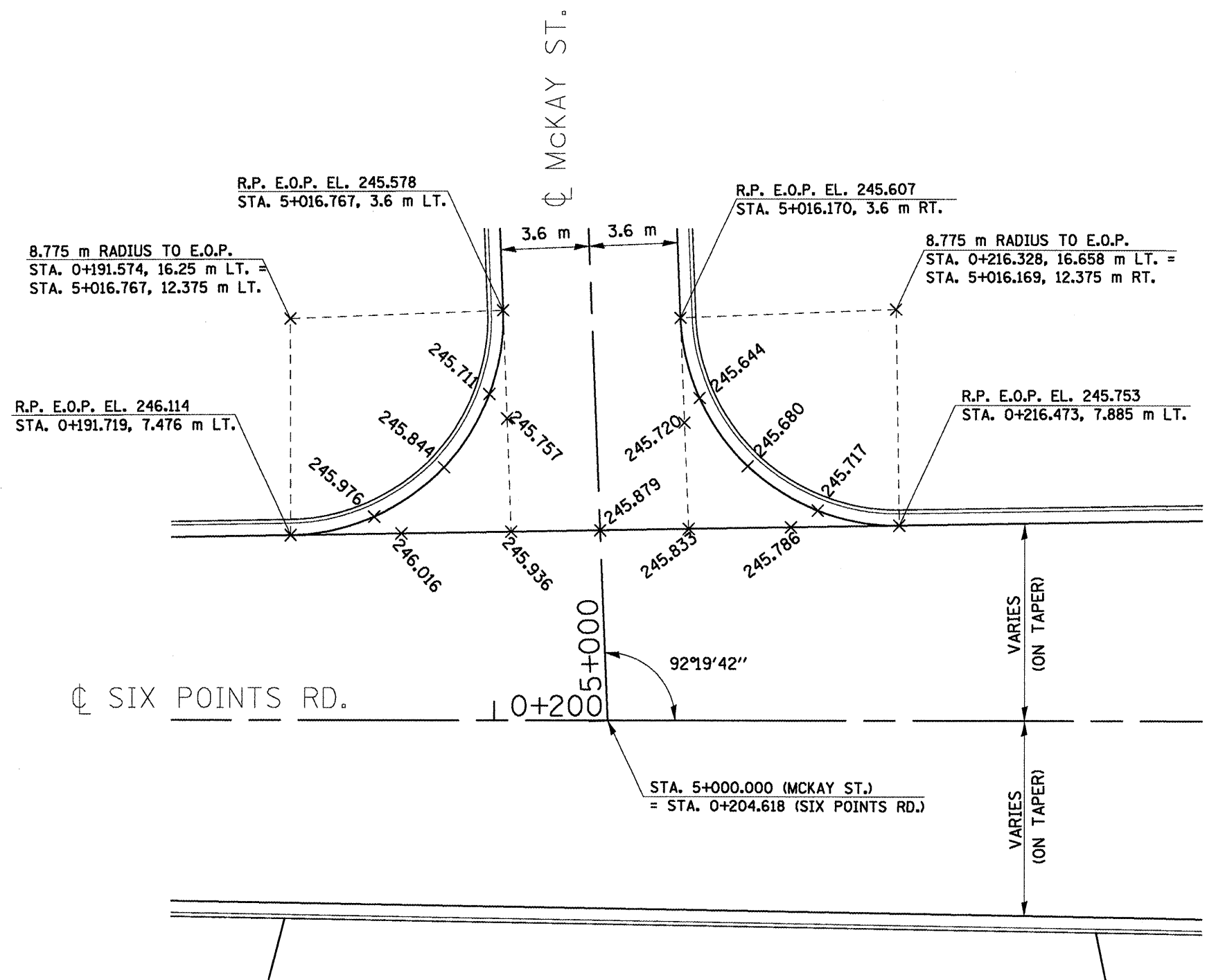
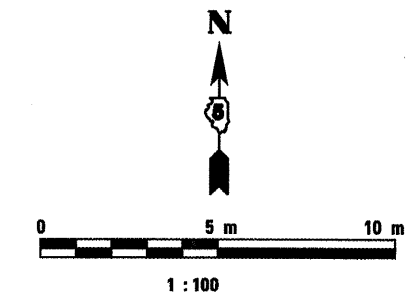


|                     |            |                           |              |           |
|---------------------|------------|---------------------------|--------------|-----------|
| F.A.P. RT.E.        | SECTION    | COUNTY                    | TOTAL SHEETS | SHEET NO. |
| 704                 | (LN & TS-1 | MOLEAN                    | 497          | 220       |
| STA.                |            | TO STA.                   |              |           |
| FED. ROAD DIST. NO. |            | ILLINOIS FED. AID PROJECT |              |           |
| CONTRACT NO. 70514  |            |                           |              |           |



**NOTES:**

1. ALL PROPOSED CONCRETE CURB AND GUTTER SHOWN IS B-15.45 UNLESS NOTED OTHERWISE.
2. ELEVATIONS LISTED ALONG THE EDGE OF PAVEMENT BETWEEN THE RETURN POINTS ARE QUARTER POINTS OF THE TOTAL CURVE LENGTH.

| REVISIONS |      |
|-----------|------|
| NAME      | DATE |
|           |      |
|           |      |
|           |      |
|           |      |
|           |      |
|           |      |
|           |      |

ILLINOIS DEPARTMENT OF TRANSPORTATION

MCKAY ST. AND SIX POINTS RD.  
INTERSECTION DETAILS

DRAWN BY SAM  
CHECKED BY PMH

DATE 05-27-09

**MCKAY ST. AND SIX POINTS RD. INTERSECTION DETAILS**