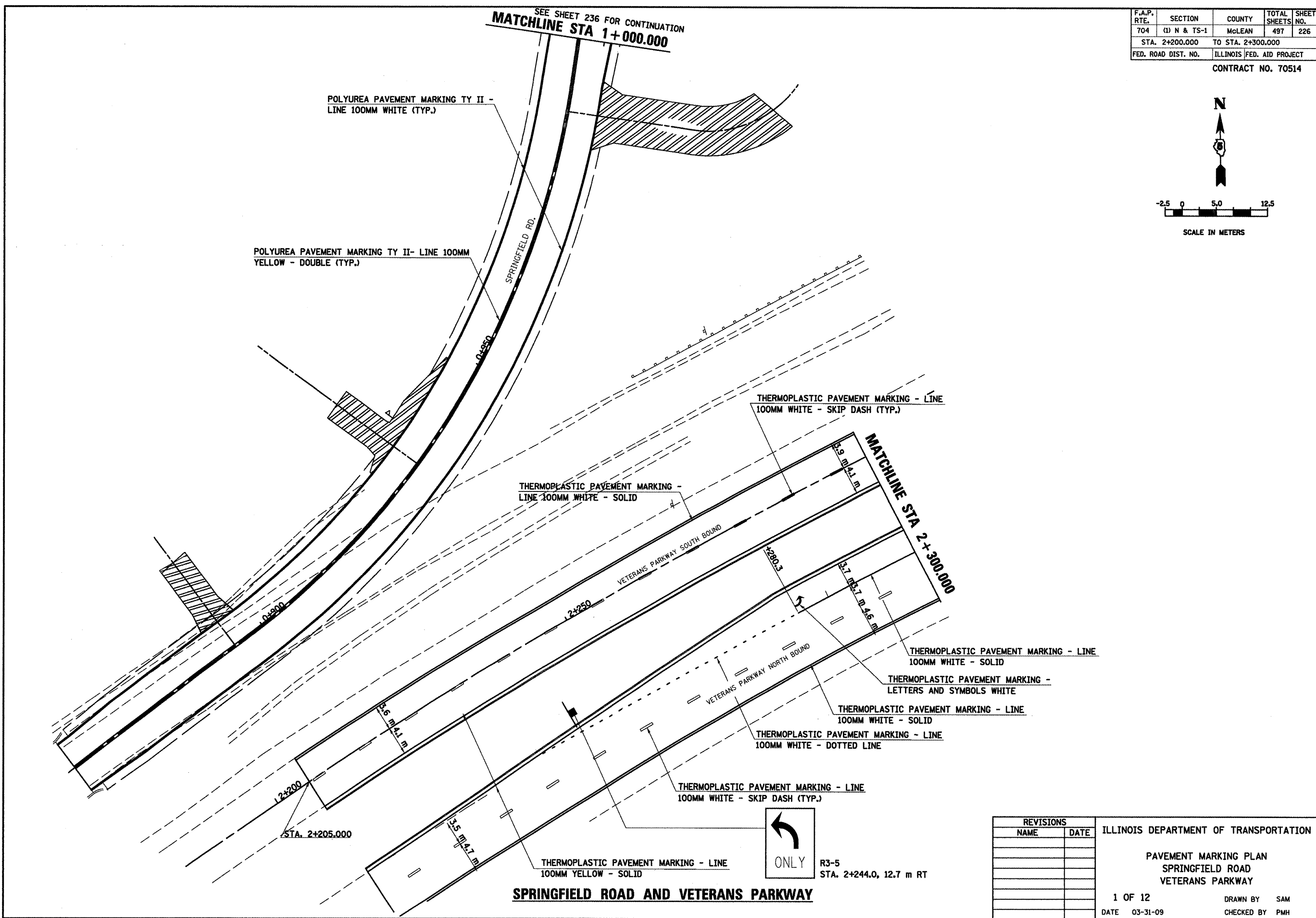
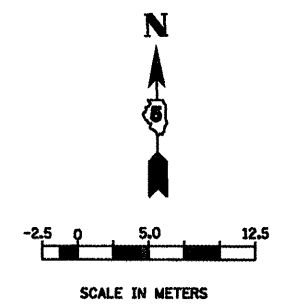


F.A.P. RTE.	SECTION	COUNTY	TOTAL SHEETS	SHEET NO.
704	(1) N & TS-1	McLEAN	497	226
STA. 2+200.000		TO STA. 2+300.000		
FED. ROAD DIST. NO.		ILLINOIS FED. AID PROJECT		

CONTRACT NO. 70514



SPRINGFIELD ROAD AND VETERANS PARKWAY

← ONLY R3-5 STA. 2+244.0, 12.7 m RT

REVISIONS	
NAME	DATE

ILLINOIS DEPARTMENT OF TRANSPORTATION
 PAVEMENT MARKING PLAN
 SPRINGFIELD ROAD
 VETERANS PARKWAY
 1 OF 12
 DATE 03-31-09
 DRAWN BY SAM
 CHECKED BY PMH