

**TEMPORARY TRAFFIC SIGNAL LEGEND**

- ⊗ TEMPORARY WOOD POLE
- ⊕ TEMPORARY TRAFFIC SIGNAL HEAD WITH BACKPLATE
- ⊕ TEMPORARY TRAFFIC SIGNAL HEAD WITH BACK PLATE
- ⊕ SPAN WIRE MOUNTED (SECONDARY LOCATION)
- ⊕ GUY WIRE
- ⊕ TEMPORARY TRAFFIC SIGNAL CONTROLLER CABINET
- ⊕ TEMPORARY SERVICE INSTALLATION

**EXISTING EQUIPMENT TO BE REMOVED LEGEND**

- ⊕ EXISTING SIGNAL HEAD TO BE REMOVED
- ⊕ EXISTING SIGNAL POST AND FOUNDATION TO BE REMOVED
- ⊕ EXISTING MAST ARM POLE AND FOUNDATION TO BE REMOVED
- ⊕ EXISTING CONTROLLER TO BE REMOVED, FOUNDATION TO REMAIN
- ⊕ EXISTING HANDHOLE TO BE REMOVED
- ⊕ EXISTING HANDHOLE TO BE REMAIN
- ⊕ SIGNAL HEAD, PEDESTRIAN
- ⊕ EXISTING JUNCTION BOX TO BE REMOVED
- ⊕ EXISTING MAGNETIC DETECTOR TO BE REMOVED
- ⊕ EMERGENCY VEHICLE LIGHT DETECTOR
- ⊕ EXISTING PEDESTRIAN PUSHBUTTON TO BE REMOVED

**TEMPORARY LIGHTING LEGEND**

- ⊕ TEMPORARY LIGHTING CONTROLLER
- ⊕ TEMPORARY SPAN WIRE, TETHER WIRE AND POWER CABLE
- ⊕ 400W H.P.S. LUMINAIRE MOUNTED 3.5 m LONG MAST ARM ASSEMBLY
- ⊕ EXISTING LIGHTING EQUIPMENT TO BE REMOVED

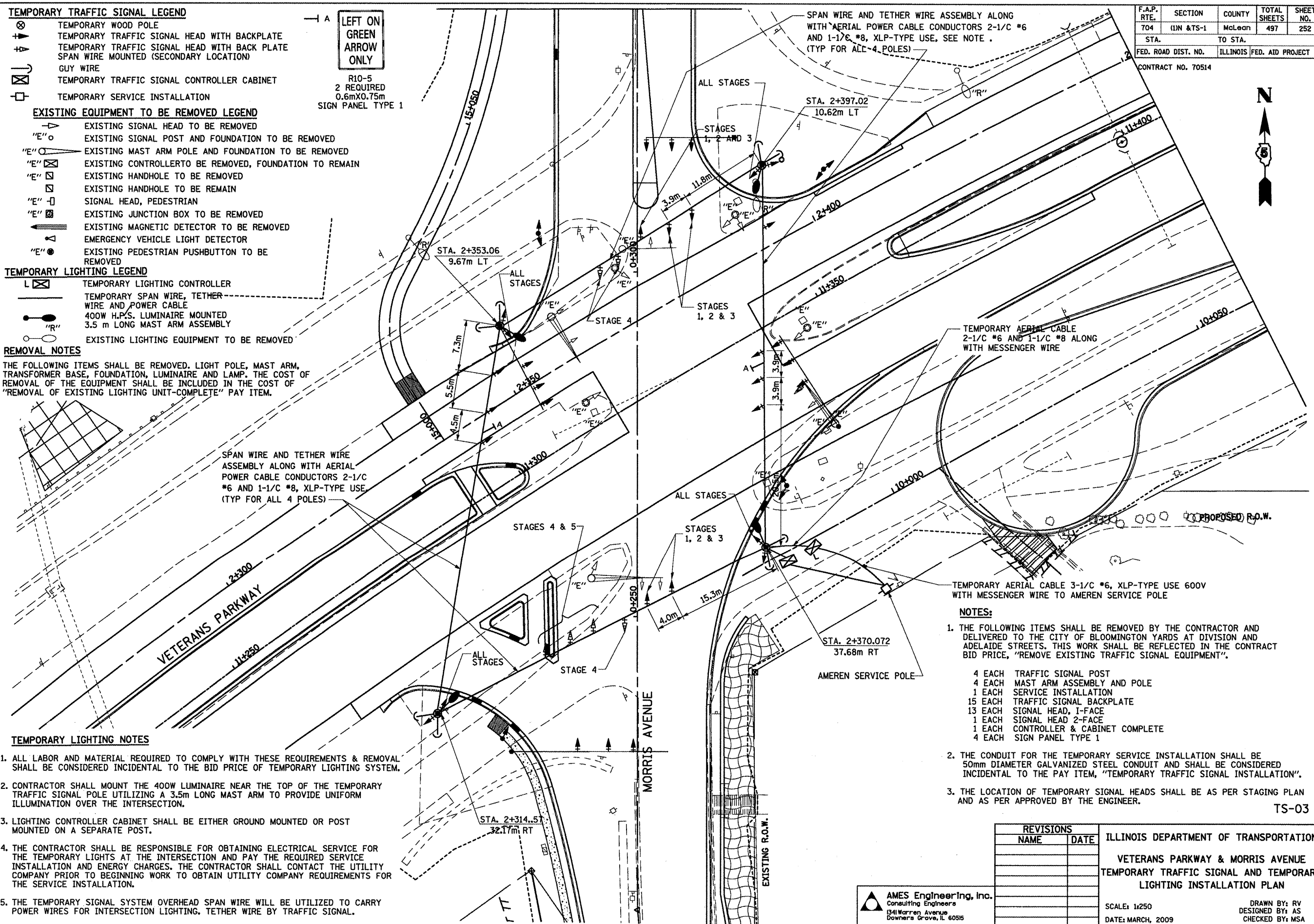
**REMOVAL NOTES**

THE FOLLOWING ITEMS SHALL BE REMOVED. LIGHT POLE, MAST ARM, TRANSFORMER BASE, FOUNDATION, LUMINAIRE AND LAMP. THE COST OF REMOVAL OF THE EQUIPMENT SHALL BE INCLUDED IN THE COST OF "REMOVAL OF EXISTING LIGHTING UNIT-COMPLETE" PAY ITEM.

**TEMPORARY LIGHTING NOTES**

1. ALL LABOR AND MATERIAL REQUIRED TO COMPLY WITH THESE REQUIREMENTS & REMOVAL SHALL BE CONSIDERED INCIDENTAL TO THE BID PRICE OF TEMPORARY LIGHTING SYSTEM.
2. CONTRACTOR SHALL MOUNT THE 400W LUMINAIRE NEAR THE TOP OF THE TEMPORARY TRAFFIC SIGNAL POLE UTILIZING A 3.5m LONG MAST ARM TO PROVIDE UNIFORM ILLUMINATION OVER THE INTERSECTION.
3. LIGHTING CONTROLLER CABINET SHALL BE EITHER GROUND MOUNTED OR POST MOUNTED ON A SEPARATE POST.
4. THE CONTRACTOR SHALL BE RESPONSIBLE FOR OBTAINING ELECTRICAL SERVICE FOR THE TEMPORARY LIGHTS AT THE INTERSECTION AND PAY THE REQUIRED SERVICE INSTALLATION AND ENERGY CHARGES. THE CONTRACTOR SHALL CONTACT THE UTILITY COMPANY PRIOR TO BEGINNING WORK TO OBTAIN UTILITY COMPANY REQUIREMENTS FOR THE SERVICE INSTALLATION.
5. THE TEMPORARY SIGNAL SYSTEM OVERHEAD SPAN WIRE WILL BE UTILIZED TO CARRY POWER WIRES FOR INTERSECTION LIGHTING. TETHER WIRE BY TRAFFIC SIGNAL.

← A  
**LEFT ON GREEN ARROW ONLY**  
 R10-5  
 2 REQUIRED  
 0.6mX0.75m  
 SIGN PANEL TYPE 1



F.A.P. RTE.	SECTION	COUNTY	TOTAL SHEETS	SHEET NO.
704	(DN & TS-1	McLean	497	252
STA.		TO STA.		
FED. ROAD DIST. NO.		ILLINOIS FED. AID PROJECT		

CONTRACT NO. 70514

TEMPORARY AERIAL CABLE 3-1/C #6, XLP-TYPE USE 600V WITH MESSENGER WIRE TO AMEREN SERVICE POLE

**NOTES:**

1. THE FOLLOWING ITEMS SHALL BE REMOVED BY THE CONTRACTOR AND DELIVERED TO THE CITY OF BLOOMINGTON YARDS AT DIVISION AND ADELAIDE STREETS. THIS WORK SHALL BE REFLECTED IN THE CONTRACT BID PRICE, "REMOVE EXISTING TRAFFIC SIGNAL EQUIPMENT".
  - 4 EACH TRAFFIC SIGNAL POST
  - 4 EACH MAST ARM ASSEMBLY AND POLE
  - 1 EACH SERVICE INSTALLATION
  - 15 EACH TRAFFIC SIGNAL BACKPLATE
  - 13 EACH SIGNAL HEAD, I-FACE
  - 1 EACH SIGNAL HEAD 2-FACE
  - 1 EACH CONTROLLER & CABINET COMPLETE
  - 4 EACH SIGN PANEL TYPE 1
2. THE CONDUIT FOR THE TEMPORARY SERVICE INSTALLATION SHALL BE 50mm DIAMETER GALVANIZED STEEL CONDUIT AND SHALL BE CONSIDERED INCIDENTAL TO THE PAY ITEM, "TEMPORARY TRAFFIC SIGNAL INSTALLATION".
3. THE LOCATION OF TEMPORARY SIGNAL HEADS SHALL BE AS PER STAGING PLAN AND AS PER APPROVED BY THE ENGINEER.

TS-03

REVISIONS	
NAME	DATE

ILLINOIS DEPARTMENT OF TRANSPORTATION  
 VETERANS PARKWAY & MORRIS AVENUE  
 TEMPORARY TRAFFIC SIGNAL AND TEMPORARY LIGHTING INSTALLATION PLAN

SCALE: 1:250  
 DATE: MARCH, 2009

DRAWN BY: RV  
 DESIGNED BY: AS  
 CHECKED BY: MSA

**AMES Engineering, Inc.**  
 Consulting Engineers  
 1341 Warren Avenue  
 Downers Grove, IL 60515

\$FILE\$ 10/14/2010 \$TIME\$