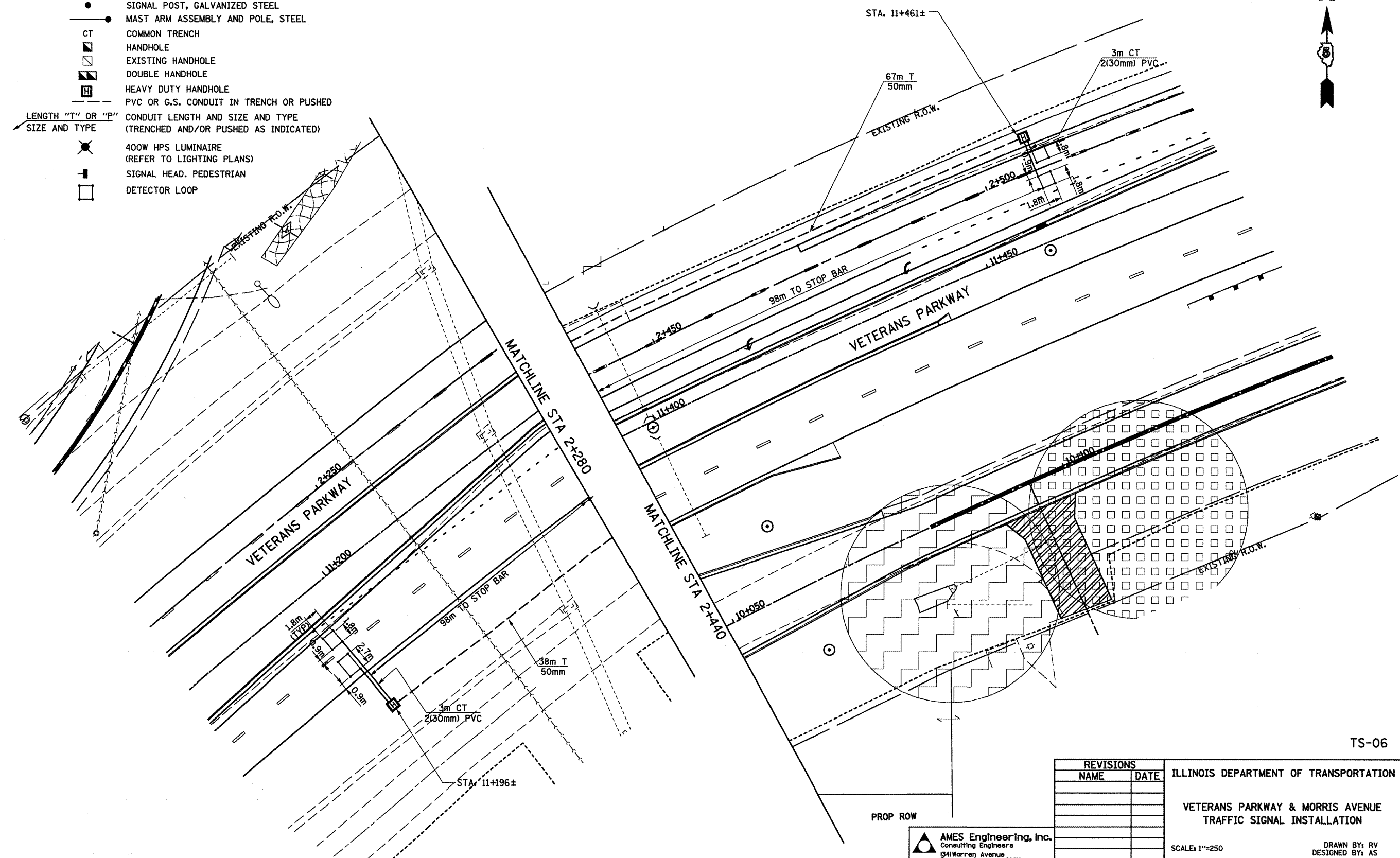


F.A.P. RTE.	SECTION	COUNTY	TOTAL SHEETS	SHEET NO.
704	(DN & TS-1)	McLean	497	255
STA.		TO STA.		
FED. ROAD DIST. NO.	ILLINOIS	FED. AID PROJECT		
CONTRACT NO. 70514				

PROPOSED TRAFFIC SIGNAL LEGEND

- CONTROLLER LOCATED ON EXISTING FOUNDATION
- SERVICE INSTALLATION
- SIGNAL HEAD
- SIGNAL HEAD WITH BACK PLATE
- SIGNAL POST, GALVANIZED STEEL
- MAST ARM ASSEMBLY AND POLE, STEEL
- CT
COMMON TRENCH
- HANDHOLE
- EXISTING HANDHOLE
- DOUBLE HANDHOLE
- HEAVY DUTY HANDHOLE
- PVC OR G.S. CONDUIT IN TRENCH OR PUSHED
- LENGTH "T" OR "P"
SIZE AND TYPE
CONDUIT LENGTH AND SIZE AND TYPE
(TRENCHED AND/OR PUSHED AS INDICATED)
- 400W HPS LUMINAIRE
(REFER TO LIGHTING PLANS)
- SIGNAL HEAD, PEDESTRIAN
- DETECTOR LOOP



TS-06

REVISIONS	
NAME	DATE

ILLINOIS DEPARTMENT OF TRANSPORTATION
**VETERANS PARKWAY & MORRIS AVENUE
TRAFFIC SIGNAL INSTALLATION**
SCALE: 1"=250
DATE: MARCH, 2009
DRAWN BY: RV
DESIGNED BY: AS
CHECKED BY: MSA

AMES Engineering, Inc.
Consulting Engineers
1341 Warren Avenue
Downers Grove, IL 60515

\$FILES\$ 10/14/2010 \$TIME\$