

PROPOSED TRAFFIC SIGNAL LEGEND

- CONTROLLER LOCATED ON EXISTING FOUNDATION
- SERVICE INSTALLATION
- SIGNAL HEAD
- SIGNAL HEAD WITH BACK PLATE
- SIGNAL POST, GALVANIZED STEEL
- MAST ARM ASSEMBLY AND POLE, STEEL
- CT COMMON TRENCH
- HANDHOLE
- HEAVY DUTY HANDHOLE
- EXISTING HANDHOLE
- DOUBLE HANDHOLE
- PVC OR G.S. CONDUIT IN TRENCH OR PUSHED
- LENGTH "T" OR "P" SIZE AND TYPE CONDUIT LENGTH AND SIZE AND TYPE (TRENCHED AND/OR PUSHED AS INDICATED)
- COMBINATION LIGHTING UNIT, 400W HPS LUMINAIRE (SEE NOTE 2)
- SIGNAL HEAD, PEDESTRIAN
- DETECTOR LOOP
- EMERGENCY VEHICLE LIGHT DETECTOR

INSTALL CONDUIT FOR PREEMPTION TO FIRE DEPARTMENT APPROX. STA. 0+610±

F.A.P. RTE.	SECTION	COUNTY	TOTAL SHEETS	SHEET NO.
704	(1N & TS-1)	McLean	497	259
STA.	TO STA.			
FED. ROAD DIST. NO.	ILLINOIS	FED. AID PROJECT		

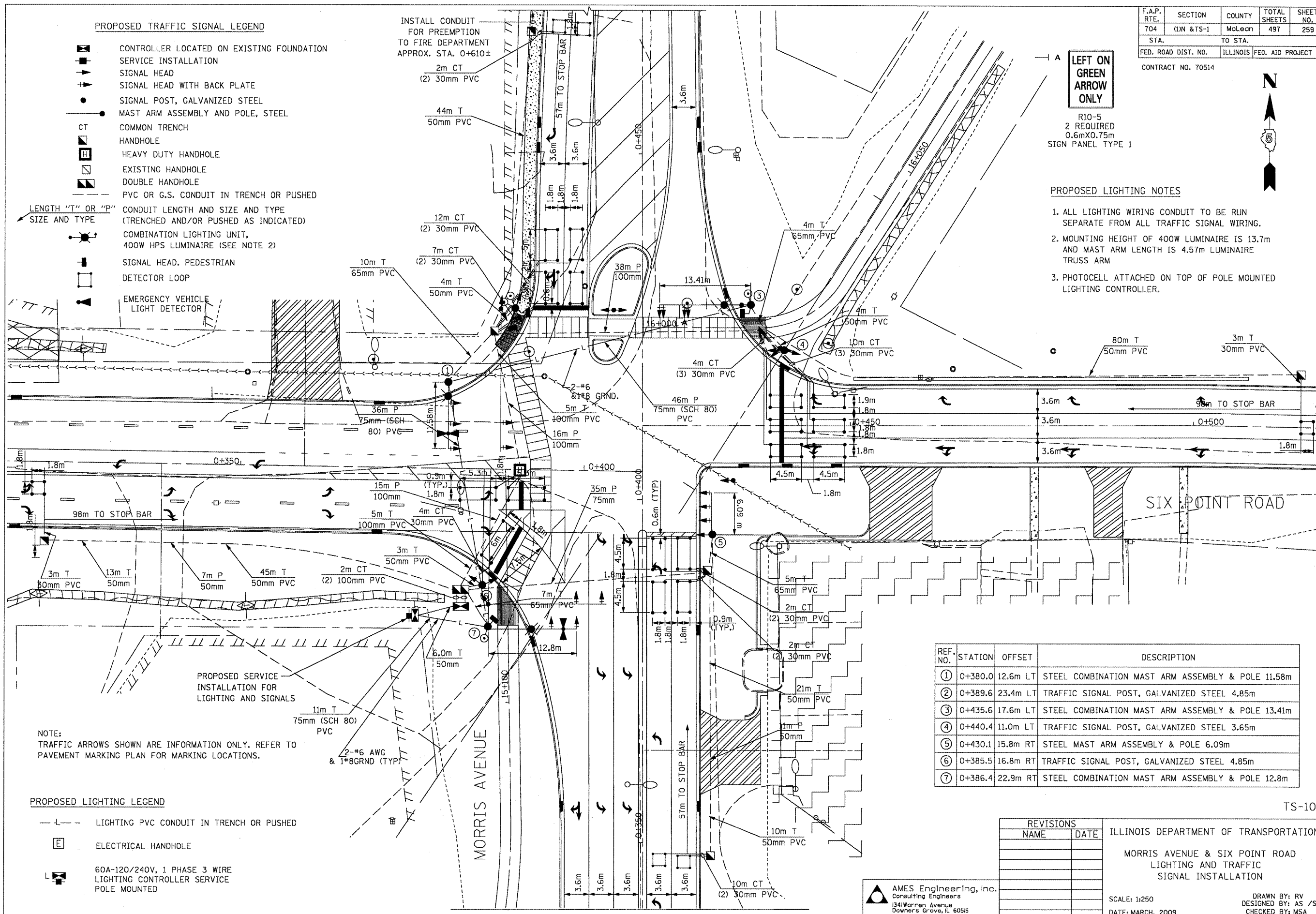
CONTRACT NO. 70514

LEFT ON GREEN ARROW ONLY

R10-5
2 REQUIRED
0.6mX0.75m
SIGN PANEL TYPE 1

PROPOSED LIGHTING NOTES

- ALL LIGHTING WIRING CONDUIT TO BE RUN SEPARATE FROM ALL TRAFFIC SIGNAL WIRING.
- MOUNTING HEIGHT OF 400W LUMINAIRE IS 13.7m AND MAST ARM LENGTH IS 4.57m LUMINAIRE TRUSS ARM
- PHOTOCELL ATTACHED ON TOP OF POLE MOUNTED LIGHTING CONTROLLER.



NOTE:
TRAFFIC ARROWS SHOWN ARE INFORMATION ONLY. REFER TO PAVEMENT MARKING PLAN FOR MARKING LOCATIONS.

PROPOSED LIGHTING LEGEND

- LIGHTING PVC CONDUIT IN TRENCH OR PUSHED
- ELECTRICAL HANDHOLE
- 60A-120/240V, 1 PHASE 3 WIRE LIGHTING CONTROLLER SERVICE POLE MOUNTED

REF. NO.	STATION	OFFSET	DESCRIPTION
①	0+380.0	12.6m LT	STEEL COMBINATION MAST ARM ASSEMBLY & POLE 11.58m
②	0+389.6	23.4m LT	TRAFFIC SIGNAL POST, GALVANIZED STEEL 4.85m
③	0+435.6	17.6m LT	STEEL COMBINATION MAST ARM ASSEMBLY & POLE 13.41m
④	0+440.4	11.0m LT	TRAFFIC SIGNAL POST, GALVANIZED STEEL 3.65m
⑤	0+430.1	15.8m RT	STEEL MAST ARM ASSEMBLY & POLE 6.09m
⑥	0+385.5	16.8m RT	TRAFFIC SIGNAL POST, GALVANIZED STEEL 4.85m
⑦	0+386.4	22.9m RT	STEEL COMBINATION MAST ARM ASSEMBLY & POLE 12.8m

TS-10

REVISIONS	
NAME	DATE

ILLINOIS DEPARTMENT OF TRANSPORTATION
MORRIS AVENUE & SIX POINT ROAD
LIGHTING AND TRAFFIC
SIGNAL INSTALLATION

SCALE: 1:250
DATE: MARCH, 2009

DRAWN BY: RV
DESIGNED BY: AS /SM
CHECKED BY: MSA

AMES Engineering, Inc.
Consulting Engineers
1341 Warren Avenue
Downers Grove, IL 60515

\$FILES\$ 10/14/2010 \$TIME\$