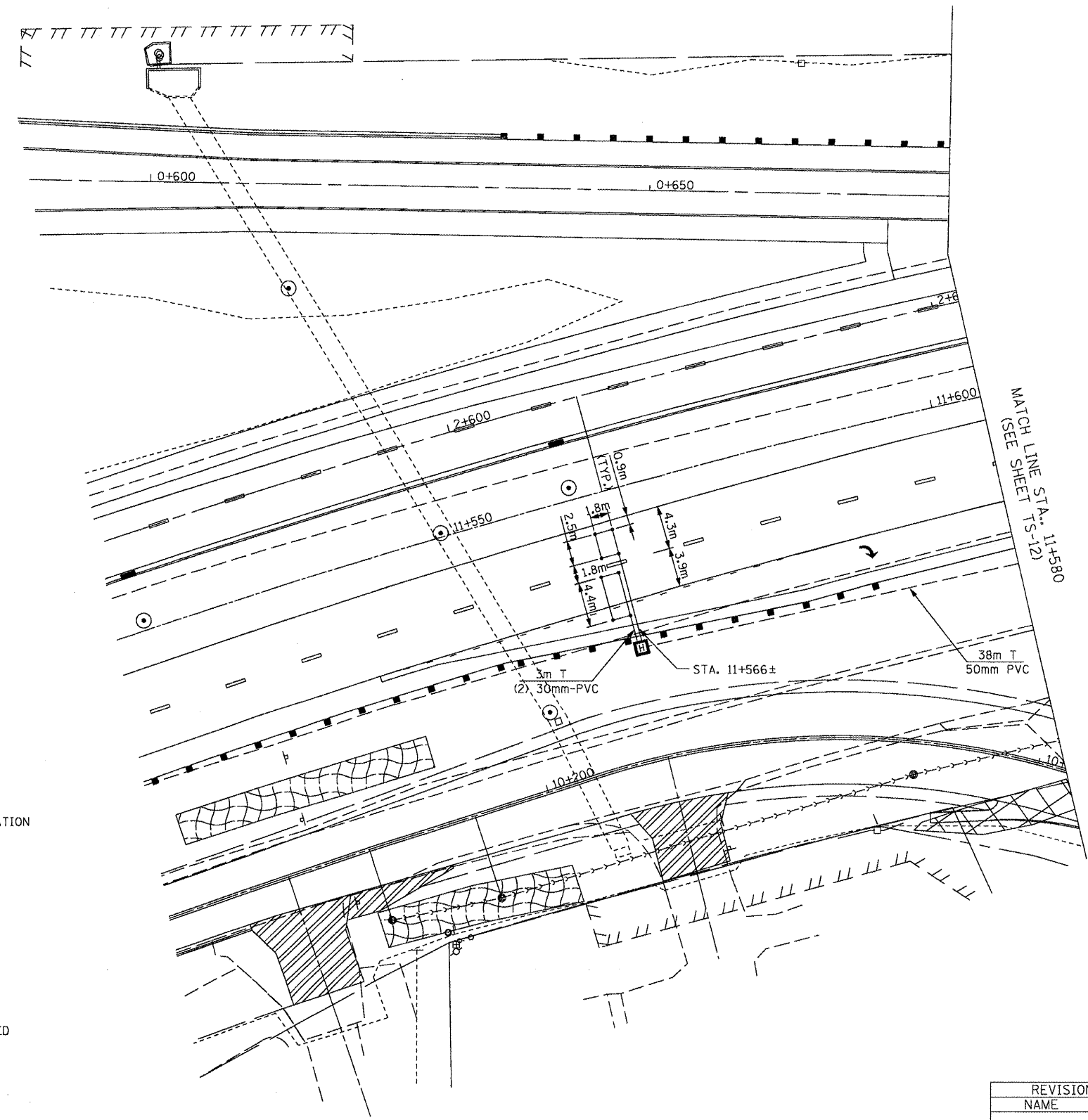


F.A.P. RTE.	SECTION	COUNTY	TOTAL SHEETS	SHEET NO.
704	(1)N & TS-1	McLean	497	262
STA.		TO STA.		
FED. ROAD DIST. NO.		ILLINOIS FED. AID PROJECT		
CONTRACT NO. 70514				



PROPOSED TRAFFIC SIGNAL LEGEND

- CONTROLLER LOCATED ON EXISTING FOUNDATION
- SERVICE INSTALLATION
- SIGNAL HEAD
- SIGNAL HEAD WITH BACK PLATE
- SIGNAL POST, GALVANIZED STEEL
- MAST ARM ASSEMBLY AND POLE, STEEL
- COMMON TRENCH
- HANDHOLE
- EXISTING HANDHOLE
- DOUBLE HANDHOLE
- HEAVY DUTY HANDHOLE
- PVC OR G.S. CONDUIT IN TRENCH OR PUSHED
- LENGTH "T" OR "P" SIZE AND TYPE  
CONDUIT LENGTH AND SIZE AND TYPE (TRENCHED AND/OR PUSHED AS INDICATED)
- 400W HPS LUMINAIRE (REFER TO LIGHTING PLANS)
- SIGNAL HEAD, PEDESTRIAN
- DETECTOR LOOP

TS-13

REVISIONS	
NAME	DATE

ILLINOIS DEPARTMENT OF TRANSPORTATION  
 VETERANS PARKWAY AND GREENWOOD AVE.  
 TRAFFIC SIGNAL INSTALLATION-2  
 SCALE:  
 DATE: MARCH, 2009  
 DRAWN BY: RV  
 DESIGNED BY: AS  
 CHECKED BY: MSA

AMES Engineering, Inc.  
 Consulting Engineers  
 1341 Warren Avenue  
 Downers Grove, IL 60515

\$FILES\$ 10/14/2010 \$TIME\$