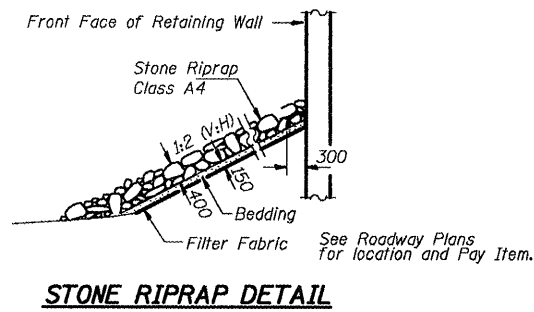
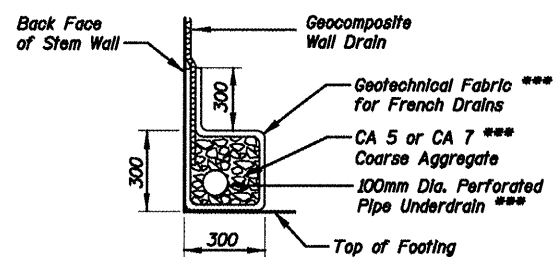
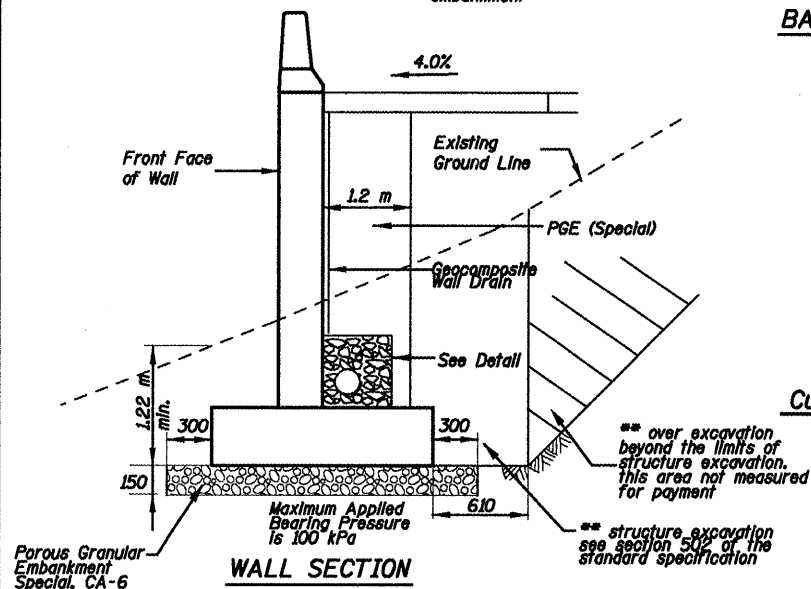


STATE OF ILLINOIS  
DEPARTMENT OF TRANSPORTATION

PROJECT NO.	SECTION	SUBJECT	DATE	BY	SHEET NO. 9
F.A.P. 704	CDI	McLEAN	497	278	11 SHEETS
CONTRACT NO. 70514					



\*\* backfill remainder of structure, excavation and over excavation with same material specified for roadway embankment

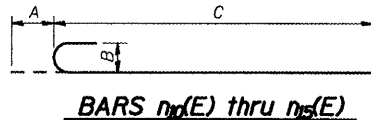
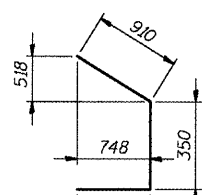
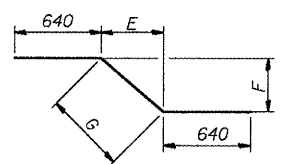
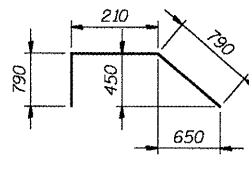
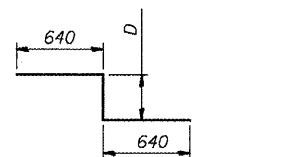
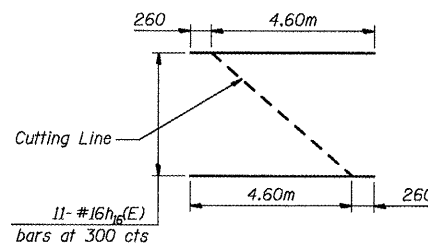
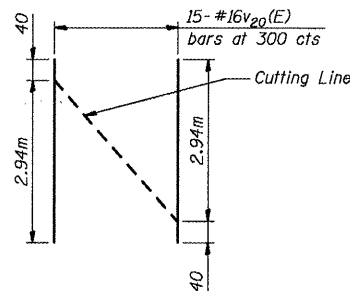
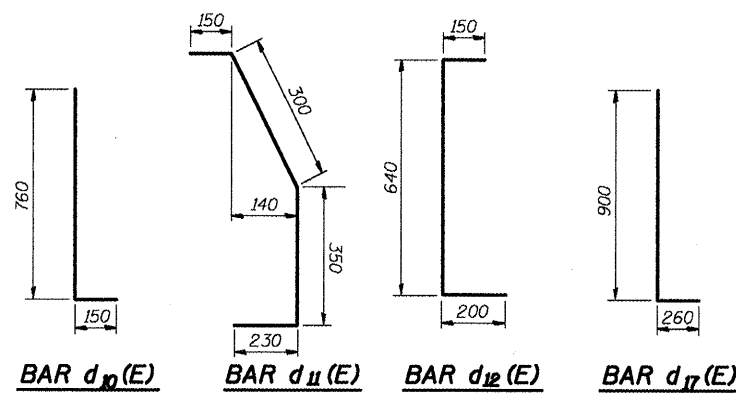


\*\*\* Cast Included with "Pipe Underdrains for Structures".

SHIVE HATTERY

DESIGNED	JDA
CHECKED	WCT
DRAWN	MAC
CHECKED	WCT

DATE: 06-25-10



**BILL OF MATERIAL**

Bar	No.	Size	Length	Shape
d <sub>10</sub> (E)	652	#16	0.910m	U
d <sub>11</sub> (E)	326	#16	1.030m	U
d <sub>12</sub> (E)	326	#16	0.990m	U
d <sub>13</sub> (E)	4	#22	1.890m	U
d <sub>14</sub> (E)	4	#22	5.740m	U
d <sub>15</sub> (E)	4	#22	2.050m	U
d <sub>16</sub> (E)	4	#22	3.210m	U
d <sub>17</sub> (E)	44	#16	1.160m	U
e <sub>1</sub> (E)	48	#16	7.070m	U
e <sub>2</sub> (E)	12	#25	7.750m	U
e <sub>3</sub> (E)	16	#16	7.640m	U
e <sub>4</sub> (E)	4	#25	8.320m	U
e <sub>5</sub> (E)	24	#16	6.350m	U
e <sub>6</sub> (E)	6	#25	6.350m	U
e <sub>7</sub> (E)	8	#16	4.770m	U
e <sub>8</sub> (E)	2	#25	5.450m	U
e <sub>9</sub> (E)	16	#16	6.920m	U
e <sub>10</sub> (E)	4	#25	6.920m	U
h <sub>1</sub> (E)	10	#16	7.070m	U
h <sub>2</sub> (E)	83	#16	7.070m	U
h <sub>3</sub> (E)	51	#16	6.350m	U
h <sub>4</sub> (E)	54	#16	6.260m	U
h <sub>5</sub> (E)	15	#16	5.710m	U
h <sub>6</sub> (E)	12	#16	3.000m	U
h <sub>7</sub> (E)	22	#16	4.860m	U
h <sub>8</sub> (E)	4	#16	7.640m	U
h <sub>9</sub> (E)	6	#16	6.350m	U
h <sub>10</sub> (E)	6	#16	6.260m	U
h <sub>11</sub> (E)	2	#16	6.920m	U
h <sub>12</sub> (E)	36	#16	7.640m	U
h <sub>13</sub> (E)	15	#16	6.920m	U
n <sub>10</sub> (E)	117	#16	1.290m	U
n <sub>11</sub> (E)	72	#22	1.890m	U
n <sub>12</sub> (E)	199	#25	2.750m	U
n <sub>13</sub> (E)	105	#22	2.270m	U
n <sub>14</sub> (E)	36	#16	1.820m	U
n <sub>15</sub> (E)	44	#16	1.900m	U
n <sub>16</sub> (E)	46	#16	2.460m	U
n <sub>17</sub> (E)	93	#16	3.150m	U
n <sub>18</sub> (E)	298	#16	3.830m	U
n <sub>19</sub> (E)	32	#22	5.870m	U
n <sub>20</sub> (E)	18	#16	5.870m	U
n <sub>21</sub> (E)	114	#16	3.530m	U
n <sub>22</sub> (E)	50	#16	2.970m	U
v <sub>1</sub> (E)	28	#16	1.670m	U
v <sub>2</sub> (E)	37	#16	2.260m	U
v <sub>3</sub> (E)	11	#16	2.860m	U
v <sub>4</sub> (E)	6	#16	3.220m	U
v <sub>5</sub> (E)	6	#16	3.270m	U
v <sub>6</sub> (E)	5	#16	3.340m	U
v <sub>7</sub> (E)	6	#16	3.420m	U
v <sub>8</sub> (E)	3	#16	3.070m	U
v <sub>9</sub> (E)	28	#16	3.210m	U
v <sub>10</sub> (E)	3	#16	3.270m	U
v <sub>11</sub> (E)	34	#16	2.980m	U
v <sub>12</sub> (E)	3	#16	2.970m	U
v <sub>13</sub> (E)	4	#16	3.040m	U
v <sub>14</sub> (E)	3	#16	3.110m	U
v <sub>15</sub> (E)	4	#16	3.170m	U
v <sub>16</sub> (E)	3	#16	2.640m	U
v <sub>17</sub> (E)	4	#16	2.700m	U
v <sub>18</sub> (E)	3	#16	3.160m	U
v <sub>19</sub> (E)	3	#16	3.350m	U
v <sub>20</sub> (E)	72	#16	2.450m	U
v <sub>21</sub> (E)	130	#22	2.770m	U
v <sub>22</sub> (E)	69	#22	2.660m	U
v <sub>23</sub> (E)	101	#16	2.400m	U
v <sub>24</sub> (E)	36	#16	2.300m	U

**BILL OF MATERIAL CONT'D**

Bar	No.	Size	Length	Shape
w <sub>1</sub> (E)	26	#16	6.350m	U
w <sub>2</sub> (E)	112	#16	6.890m	U
w <sub>3</sub> (E)	20	#16	4.590m	U
w <sub>4</sub> (E)	56	#16	2.360m	U
w <sub>5</sub> (E)	20	#16	5.160m	U
w <sub>6</sub> (E)	36	#16	7.280m	U
w <sub>7</sub> (E)	16	#16	6.920m	U
z <sub>1</sub> (E)	21	#16	1.880m	U
z <sub>2</sub> (E)	8	#16	1.600m	U
z <sub>3</sub> (E)	19	#16	1.730m	U
z <sub>4</sub> (E)	21	#16	2.130m	U
z <sub>5</sub> (E)	8	#16	1.730m	U
z <sub>6</sub> (E)	19	#16	1.920m	U
Concrete Structures		m <sup>3</sup>	258	
Reinforcement Bars, Epoxy Coated		kg	21,190	

Bars Indicated thus 12 x 4-#15 etc. Indicates 12 lines of bars with 4 lengths per line.

Reinforcement bars designated (E) shall be epoxy coated. All construction joints shall be bonded.

**BARS n<sub>10</sub>(E) thru n<sub>15</sub>(E) Dimensions**

	A	B	C
n <sub>10</sub> (E)	180	130	1.110m
n <sub>11</sub> (E)	250	180	1.640m
n <sub>12</sub> (E)	280	200	2.470m
n <sub>13</sub> (E)	250	180	2.020m
n <sub>14</sub> (E)	180	130	1.640m

**BARS z<sub>10</sub>(E) thru z<sub>15</sub>(E) Dimensions**

	D	E	F	G
z <sub>10</sub> (E)	600	—	—	—
z <sub>11</sub> (E)	320	—	—	—
z <sub>12</sub> (E)	450	—	—	—
z <sub>13</sub> (E)	—	600	600	849
z <sub>14</sub> (E)	—	320	320	454
z <sub>15</sub> (E)	—	450	450	636

**MIN. BAR LAP**

#16	640mm
#25	1320m

DETAILS  
RETAINING WALL ALONG SIX POINTS ROAD  
F.A.P. ROUTE 704 SECTION (I) N&TS-1  
McLEAN COUNTY  
STATION 0+545.000 TO 0+635.000  
STRUCTURE NO. 057-W001