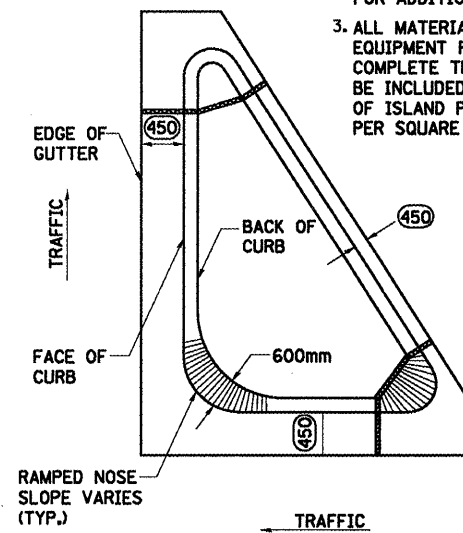


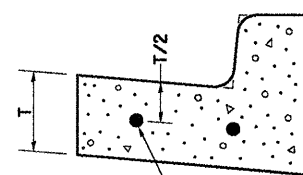
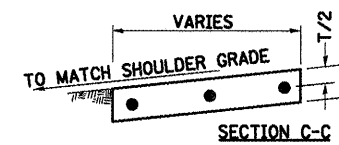
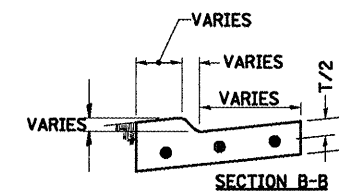
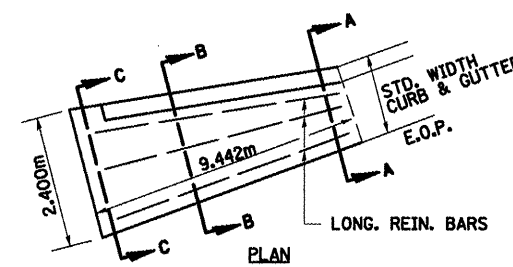
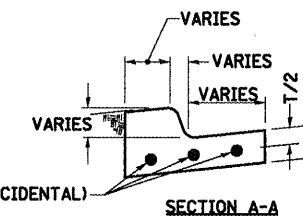
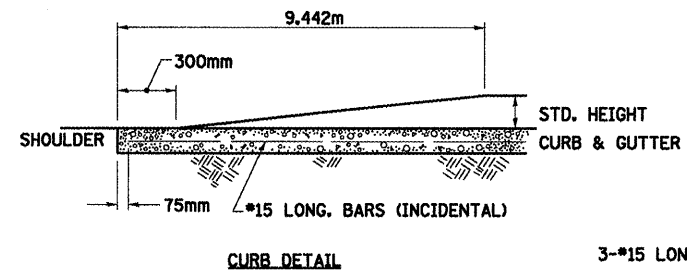
| | | | | |
|---------------------|-----------|---------------------------|--------------|-----------|
| F.A.P. RTE. | SECTION | COUNTY | TOTAL SHEETS | SHEET NO. |
| 704 | (LN&TS-1) | McLEAN | 497 | 301 |
| STA. N/A | | TO STA. N/A | | |
| FED. ROAD DIST. NO. | | ILLINOIS FED. AID PROJECT | | |
| CONTRACT NO. 70514 | | | | |

GENERAL NOTES:

1. THE CURB AND GUTTER CONFIGURATION SHALL BE B-15.45.
2. SEE STD. 606001 & AND 606301 FOR ADDITIONAL DETAILS.
3. ALL MATERIALS, LABOR, AND EQUIPMENT REQUIRED TO COMPLETE THE WORK SHALL BE INCLUDED IN THE COST OF ISLAND PAVEMENT (SPECIAL) PER SQUARE METER.



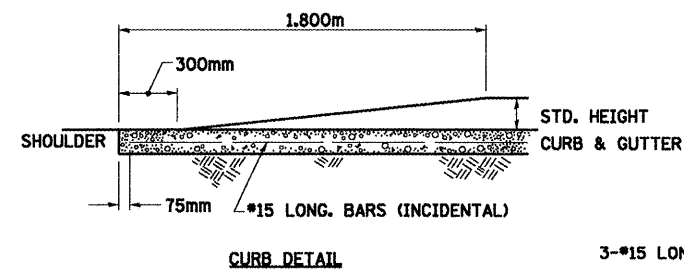
**OUTLET SPECIAL
STA. 2+412.055 & STA. 2+456.661**



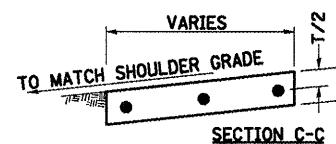
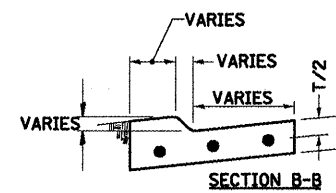
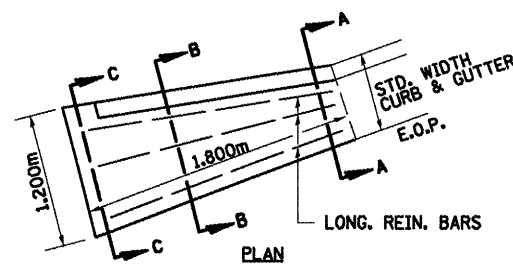
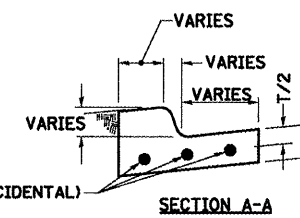
CONTINUOUSLY REINFORCED WITH 2 - #15 BARS EVENLY SPACED

REINFORCEMENT SHALL NOT BE PAID FOR SEPARATELY BUT WILL BE INCLUDED IN THE CONTRACT UNIT PRICE FOR CC&G.

**REINFORCEMENT DETAIL
FOR COMBINATION CONCRETE
CURB AND GUTTER
TYPE B-15.45**



3-#15 LONG. BARS (INCIDENTAL)



CURB & GUTTER OUTLET, SPECIAL

| REVISIONS | |
|-----------|------|
| NAME | DATE |
| | |
| | |
| | |
| | |
| | |
| | |

ILLINOIS DEPARTMENT OF TRANSPORTATION
DISTRICT DETAILS
DRAWN BY SAM
CHECKED BY PMH
DATE 05-27-09